

24th Annual Hales Angus Farms Sale
GENERATIONS OF ANGUS • RELIABLE BULLS



*57 years of breeding
Registered Angus genetics...*

SATURDAY, MARCH 16, 2019
1:00 PM at the farm • Canyon, Texas



ACCOMMODATIONS

Best Western, Canyon 806-655-1818
Buffalo Inn Motel, Canyon 806-655-2124
Holiday Inn Express, Canyon 806-655-4445
Days Inn South, Amarillo 806-468-7100
10 miles north of Canyon

Additional accommodations can be found in Amarillo, 20 miles north of the farm.

AIR TRANSPORTATION

Amarillo is serviced by several major airlines. Rent cars are available, or we would be happy to meet your plane with advance notice.

AUCTIONEER

Cody Lowderman

PUBLICATION REPRESENTATIVES

Radale Tiner 979-492-2663
Angus Journal
Phil Stoll 817-831-3147
Weekly Livestock Reporter
Doug Paul 405-840-3951
The Stock Exchange

Offering free delivery on the purchase of four or more bulls within 300 miles!

24th Annual Sale

SATURDAY, MARCH 16, 2019
CANYON, TEXAS 1:00 PM

at the farm, 3 miles south of Canyon on Hwy. 87, east side

Join us for complimentary lunch beginning at 11:30 a.m.

96 ANGUS BULLS

SPRING/FALL 2017 & EARLY SPRING 2018 BULLS

- Sons of the best Angus AI sires
- Several outstanding herd sire prospects are included
- Complete Performance & Ultrasound EPDs
- Ultrasound Carcass Data
- Scrotal Measurements
- Fertility Tested...Fully Guaranteed

60 ANGUS FEMALES

HEIFER MATES TO THE BULLS SELLING

- 40 Heifers bred to leading AI sires
- 20 Open Replacement Heifers

SALE DAY PHONES

806-679-9303 • 806-679-1919

SALE CONSULTANT: Casey Worrell 512-413-1610

Photos by Leslie Groves 817-266-8456



Richmond Hales 806-488-2471 • 806-679-1919 cell
Rick Hales 806-655-3815 • 806-679-9303 cell

27951 S. US Hwy. 87, Canyon, TX 79015
www.halesangus.com • 806-488-2274 fax
halesangus@gmail.com • rickhales.halesangus@gmail.com

WELCOME to Hales Angus Farms!



27951 S. US Hwy. 87, Canyon, TX 79015 • www.halesangus.com • 806-488-2274 fax

Dear Angus Friends & Fellow Cattle Producers:

It is with great pleasure that we invite you to the 24th Annual Hales Angus Farms Sale. 2019 marks our 57th year of breeding Registered Angus Cattle. I hope your family is enjoying good health and that each of you experiences a blessed year. We invite you to come and look over a super set of cattle and enjoy lunch with us.

This is our second year for our cattle to be 50K tested. We are moving faster than ever before to improve our genomic data. This will vastly improve our predictability factors and put us years ahead in our breeding program while trying to serve our customers better.

We appreciate our many friends and repeat customers that have made our program successful. After years of AI and E.T., we have developed Angus cattle that have the genetic advantage to add dollars to your program whether you sell your calves at weaning, as yearlings, or on the rail. Some of the most rewarding comments we hear are your testimonials of how your calves topped the sale, how your replacement females made the best cows you have ever owned, or how the carcasses you sold on the rail produced mostly CAB and that the premiums you received made a big difference to your bottom line. That makes our program of breeding better Angus for generations worthwhile!

We have a superior set of bulls this year. They are muscular, stout, and fertile. They have low birth weights with the biggest spread in high weaning weights and yearling weights. The females selling combine eye appeal and excellent IMF carcass numbers.

We look forward to seeing you on Sale Day, March 16, 2019. Please feel free to come by and inspect the cattle.

Sincerely,

Richmond & Rick Hales



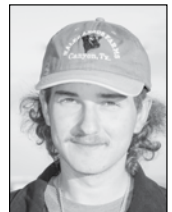
Richmond Hales



Rick Hales



Jeff Lewter



Cutler Burnett



Kelton Kinsey



Mary Jo & Richmond Hales



Rick, Stephanie, Cade & Chance Hales



Chance Hales



Cade Hales

HOW TO PARTICIPATE AS AN ABSENTEE BUYER



We have made preparations to bid and buy livestock through Superior Productions' "Call or Click-To-Bid" service for those unable to attend in person on sale day. Please note that all of the lots in the sale will also be available for viewing online prior to sale day at www.superiorlivestock.com.

HERE'S HOW IT WORKS

TURN IN BIDS OVER THE PHONE. This is our traditional method of buying livestock and is the suggested process for anyone who does not have consistent, high-speed internet. To get started simply go online to www.superiorlivestock.com and click on the tab titled "Register for a Buyer Number". Select the registration form for Superior Productions and print the registration form. Fill it out and fax it in to Superior Productions at 817-378-3380 with a signature on it, or scan and email the form to info@superiorauction.com. You can also mail it in to the address provided on the form. Upon receipt of this information Superior will call you with a buyer's number and the bid line phone number that you will use on sale day to place bids over the phone.

CLICK-TO-BID. This is Superior's online bidding program for cattle buying. Please note that high speed internet is required – this is not for dial-up or satellite internet. Registration is free, but you must become a member of www.superiorclicktobid.com to sign up. Becoming a member is easy – just go to the homepage of www.superiorclicktobid.com and follow the out-lined steps to get started. Input your information and select a username and password. You will receive an e-mail confirming you are a member. From that point forward you just have to sign in and select the sale you would like to register for and once approved by the ranch you will receive an e-mail confirming which sale you are now registered for.

VIEWING THE AUCTION. The sale will be broadcast via satellite on **Dish Network channel 997** Please note that there is a short delay if you are watching the auction on television so be sure to call in a couple lots ahead of the lot you are interested in bidding on. The sale will also be broadcast live on the internet at www.superiorclicktobid.com – just go to the home page and select the auction. Remember you can call in to bid whether you watch on the TV or on the internet, but you must be a member of www.superiorclicktobid.com to "click-to-bid". Your computer must have Flash Media Player installed to view the auction. If you have any questions, please call the Superior Productions office at 800-431-4452.

Bidders who are successful in making purchases will be contacted by the ranch after the sale to settle payment and make shipping arrangements.

CALL 800-422-2117 TO BID WITH SUPERIOR.

We recommend you call in five lots prior to the lot you are interested in.

Don't let 'em leave home without one!

If you have calves to market, don't let them leave home without an AngusSource tag. A recent third-party analysis of the Superior Livestock Auction data for 2008 showed that calves enrolled in AngusSource brought \$3.37/cwt more than non-verified calves, and \$1.29/cwt more than calves enrolled in other source and age-verified programs.

AngusSource is the most cost effective verification program available in the industry. The only program that guarantees Angus genetics, enrollment in AngusSource increases the marketability of your Angus-sired feeder calves and replacement females by:



- Verifying source and age
- Offering online marketing opportunities
- Documenting valuable health and management information
- Substantiating COOL claims
- Providing cattle an opportunity to qualify for Certified Angus Beef® regardless of hide color

To get started visit www.angussource.com to download the producer manual and enrollment forms or contact AngusSource at 816-383-5100.



ABOUT EPDs AND \$VALUE INDEXES

Expected Progeny Difference (EPD), is the prediction of how future progeny of each animal are expected to perform relative to the progeny of other animals listed in the database. EPDs are expressed in units of measure for the trait, plus or minus. Interim EPDs may appear on young animals when their performance has yet to be incorporated into the American Angus Association National Cattle Evaluation (NCE) procedures. This EPD will be preceded by an “I”, and may or may not include the animal’s own performance record for a particular trait, depending on its availability, appropriate contemporary grouping, or data edits needed for NCE.

PRODUCTION EPDs:

- **Birth Weight EPD (BW)**, expressed in pounds, is a predictor of a sire’s ability to transmit birth weight to his progeny compared to that of other sires.
- **Weaning Weight EPD (WW)**, expressed in pounds, is a predictor of a sire’s ability to transmit weaning growth to his progeny compared to that of other sires.
- **Yearling Weight EPD (YW)**, expressed in pounds, is a predictor of a sire’s ability to transmit yearling growth to his progeny compared to that of other sires.
- **Maternal Milk EPD (Milk)**, is a predictor of a sire’s genetic merit for milk and mothering ability as expressed in his daughters compared to daughters of other sires. In other words, it is that part of a calf’s weaning weight attributed to milk and mothering ability.

CARCASS EPDs:

- **Marbling EPD (MARB)**, expressed as a fraction of the difference in USDA marbling score of a sire’s progeny compared to progeny of other sires.
- **Ribeye Area EPD (RE)**, expressed in square inches, is a predictor of the difference in ribeye area of a sire’s progeny compared to progeny of other sires.
- **Fat Thickness EPD (Fat)**, expressed in inches, is a predictor of the differences in external fat thickness at the 12th rib (as measured between the 12th and 13th ribs) of a sire’s progeny compared to progeny of other sires.

\$VALUE INDEXES:

\$Value indexes are multi-trait selection indexes, expressed in dollars per head, to assist beef producers by adding simplicity to genetic selection decisions. The \$Value is an estimate of how future progeny of each sire are expected to perform, on average, compared to progeny of other sires in the database if the sires were randomly mated to cows and if calves were exposed to the same environment.

- **Weaned Calf Value (\$W)**, an index value expressed in dollars per head, is the expected average difference in future progeny performance for preweaning merit. \$W includes both revenue and cost adjustments associated with differences in birth weight, weaning direct growth, maternal milk, and mature cow size.
- **Feedlot Value (\$F)**, an index value expressed in dollars per head, is the expected average difference in future progeny performance for postweaning merit compared to progeny of other sires.
- **Grid Value (\$G)**, an index value expressed in dollars per head, is the expected average difference in future progeny performance for carcass grid merit compared to progeny of other sires.
- **Beef Value (\$B)**, an index value expressed in dollars per head, is the expected average difference in future progeny performance for postweaning and carcass value compared to progeny of other sires.

BREED AVERAGE EPDs AND \$VALUES

Breed Average for Non-Parent Bulls

PRODUCTION EPDs					CARCASS EPDs			\$ VALUES			
CED	BW	WW	YW	Milk	Marb	RE	Fat	\$W	\$F	\$G	\$B
+6	+1.3	+52	+92	+24	+0.53	+0.52	+0.010	+47.85	+48.70	+34.09	+119.16

Breed Average for Non-Parent Cows

PRODUCTION EPDs					CARCASS EPDs			\$ VALUES			
CED	BW	WW	YW	Milk	Marb	RE	Fat	\$W	\$F	\$G	\$B
+6	+1.4	+51	+91	+24	+0.58	+0.54	+0.007	+46.44	+47.07	+34.80	+118.31

AMERICAN ANGUS ASSOCIATION “CUP” PROGRAM

Hales Angus Farms is participating in the American Angus Association “CUP” Research Program. Ultrasound data on the bulls and heifers selling was collected and submitted using the CUP guidelines.

INDIVIDUAL PERFORMANCE

BW - Actual birth weight.

Adj. 205-day Wt. - Weaning weight, adjusted to 205 days of age (and in-herd ratio).

Adj. 365-day Wt. - Yearling weight, adjusted to 365 days of age (and in-herd ratio).

INDIVIDUAL ULTRASOUND DATA

Adj. %IMF - Intramuscular fat, adjusted to 365 days of age (and in-herd ratio). An objective measure of the actual amount of chemical fat in the ribeye muscle as measured between the 12th and 13th ribs using ultrasound.

Adj. Ribeye - Ribeye area in square inches, adjusted to 365 days of age (and in-herd ratio). This trait relates to the amount and shape of muscling in the carcass.

SCROTAL CIRCUMFERENCE

Actual scrotal circumference measurement taken. Spring yearling bulls have adjusted 365-scrotal circumference.

OTHER CATALOG ABBREVIATIONS/NOTATIONS

Pathfinder animals are indicated by the pound (#) sign proceeding the name or registration number. Embryo transplants are indicated by the plus (+) sign proceeding the name or registration number.

EPDs CURRENT AS OF FEBRUARY 14, 2019.

For updated EPDs, visit www.angus.org.

For more information on how to use this information
in your breeding program,
visit the American Angus Association website:
www.angus.org

Important Carcass Data To Note...

- The average % **IMF** on the fall yearling bulls selling is 4.83
...**26% above the Angus breed average** (3.83).
- The average % **IMF** on the fall yearling heifers selling is 6.12
...**28% above the Angus breed average** (4.81).
- The average % **IMF** on the spring yearling bulls selling is 4.39
...**15% above the Angus breed average** (3.83).
- The average % **IMF** on the spring yearling heifers is 5.17
...**8% above the Angus breed average** (4.81).
- The average **RE** on the fall yearling bulls selling is 12.11 *Angus breed average 12.60.*
- The average **RE** on the fall yearling heifers selling is 11.24 *Angus breed average 9.77.*

FOR YOUR INFORMATION

- Our cow herd includes approximately 40 Pathfinder Dams, many of which are included in the pedigrees of these sale cattle.
- All bulls selling have had two rounds of Bovi-Shield 5 and Ultrabac 7/Somabac, plus two rounds of Spirovac and Dectomax. All females have had two rounds of Bovi-Shield Gold FP 5VLF and Ultrabac 7/Somabac, plus two rounds of Spirovac and Dectomax.
- All females are officially calfhooed vaccinated (OCV).
- All bulls have been fertility tested.
- All cattle sell under the suggested Terms and Conditions of the American Angus Association.
- If you would like to place a bid on any lot but cannot attend the sale, please feel free to contact the owners, sale manager, auctioneer or any publication representative listed on the inside front cover.
- Announcements at the sale by the owners or the auctioneer will take precedence over statements in the sale catalog. We reserve the right to withdraw any lot not meeting our specifications prior to sale time.
- When making settlement for your purchases, please leave specific instructions in writing for transferring of registration certificates, which will be mailed to you at a later date.
- All persons who attend the sale do so at their own risk. Neither Hales Angus Farms, nor any person connected with the sale assumes liability for accidents or loss of property.

GENERAL Information

*How much can you afford to pay
for a top bull?*

COWMAN FORMULA

Increase in pounds per calf from a top performance bull
X # of cows bred to him per year
X # of years to keep the bull
X Expected selling price of calves
= Additional dollars you can pay for a better bull

Example: A bull who will add 30 lbs. to the weaning weight of each of his calves mated to 25 cows per year for 4 years and you sell the calves for \$1.70 per pound.

$$30 \times 25 = 750 \times 4 = 3000 \times \$1.70 = \$5,100$$

This bull is worth \$5,100 more than the average bull who will keep your weaning weights the same. Take this formula and put your own figures in and see what you can afford to pay. This equation does not consider the increase in value due to calving ease, higher quality replacement heifers, yearling growth, feedlot gain and improved carcass quality.

Caring for your new bull...

When you get your bull(s) home, observing these management practices will result in the best reproductive performance.

- **FEEDING:** Remember - the bull is a yearling or a long yearling and still has growing to do. Feed the young bull well. Hay and grain plus protein supplement will be adequate. You should feed 5 to 10 pounds of grain and 1 to 2 pounds of protein supplement in addition to a full feed of good quality hay from now until the start of breeding season. Supplemental feeding during the breeding season is recommended, if practical. After the first breeding season, continue to feed liberally so the bull will grow out well.
- **BREEDING SEASON:** Plan to use the new bull in a restricted 45 to 60-day breeding season the first time. Observe him closely to be sure he is serving and settling females.
- **NUMBER OF COWS:** The yearling bull should be used on a minimal number of cows or heifers. The number should be governed by his age at the start of breeding season. The following is a guide: 12 to 15 months should cover 10 to 12 females, 15 to 18 months should cover 12 to 18 females, 18 to 24 months should cover 18 to 25 females, and 24 months and older should cover 25 to 35 females.
- **MANAGEMENT AND HOUSING:** The bull should be kept in a well-fenced lot prior to and following breeding season. A shed or other natural wind-break should be provided. Supply plenty of clean water and minerals free-choice. Treat routinely for lice and grub worms. Run bulls together with caution. Bulls of similar age which have bred cows together will usually work. Check for any unsoundness which might develop. Test annually for brucellosis and leptospirosis. Vaccinate for IBR, PI3, BVD and leptospirosis.





Lot 1

HALES FORTRESS E109

TWO Year Old Bulls

LOTS 1-31



Lot 2

HALES TRAVELER E175



HALES FORTRESS E109

BD: 02/10/17 BULL: 19027622 TATTOO: E109

Connealy Consensus
K C F Bennett Fortress
 17259012
 Thomas Patricia 9705
 Sitz Upward 307R
Hales Upward Lady 3089
 17612399
 Hales Miss Future Lady 3252

KMK Alliance 6595 I87
 Blinda of Conanga 004
 S S Objective T510 0T26
 Thomas Patricia 71138
 Connealy Onward
 Sitz Henrietta Pride 81M
 C A Future Direction 5321
 Hales Bright Star 5162

PRODUCTION EPDs					CARCASS EPDs			\$ VALUES			
CED	BW	WW	YW	Milk	Marb	RE	Fat	\$W	\$F	\$G	\$B
+10	+0.7	+65	+118	+30	+0.7	+0.84	-0.005	+70.48	+73.14	+45.17	+143.72
INDIVIDUAL PERFORMANCE				ULTRASOUND DATA			SCROTAL CIRC.				
Birth Wt.	Adj. 205-day Wt.	Adj. 365-day Wt.	Adj. %IMF	Adj. RE							
75	677	1109	4.2	11.7	39						

Genomic enhanced EPDs.



HALES TRAVELER E175 [DDF]

BD: 03/19/17 BULL: 19044742 TATTOO: E175

Sitz Upward 307R
Hales 8018 Traveler 3175
 17811313
 Hales 6123 Direct Lady 8186
 S S Objective T510 0T26
Hales Objective Lady 3013
 17612384
 Hales Miss Calving Ease 6084

Connealy Onward
 Sitz Henrietta Pride 81M
 Hales Future Direction 6123
 Hales Fortune Lady 7086
 S S Traveler 6807 T510
 S S Miss Rita R011 7R8
 Hales Calving Ease 4056
 Hales Miss Future Lady 4176

PRODUCTION EPDs					CARCASS EPDs			\$ VALUES			
CED	BW	WW	YW	Milk	Marb	RE	Fat	\$W	\$F	\$G	\$B
+9	+2.1	+60	+98	+28	+0.67	+0.66	-0.002	+64.48	+58.7	+43.01	+147.76
INDIVIDUAL PERFORMANCE				ULTRASOUND DATA			SCROTAL CIRC.				
Birth Wt.	Adj. 205-day Wt.	Adj. 365-day Wt.	Adj. %IMF	Adj. RE							
69	785	1211	3.92	14.1	40						

Genomic enhanced EPDs.

PRODUCTION EPDs					CARCASS EPDs			\$ VALUES			
CED	BW	WW	YW	Milk	Marb	RE	Fat	\$W	\$F	\$G	\$B
+6	+1.3	+52	+92	+24	+0.53	+0.52	+0.010	+47.85	+48.70	+34.09	+119.16

HALES ANGUS FARMS 24TH ANNUAL SALE *Two Year Old Bulls*



HALES TEN X E136



HALES FORTRESS E116



HALES FORTRESS E116

BD: 02/13/17 BULL: 19027663 TATTOO: E116

Connealy Consensus
K C F Bennett Fortress
17259012

Thomas Patricia 9705

Sitz Upward 307R

Hales Upward Lady 1051

17020681

Hales Future Lady 3219

KMK Alliance 6595 I87
Blinda of Conanga 004
S S Objective T510 0T26
Thomas Patricia 71138

Connealy Onward
Sitz Henrietta Pride 81M
C A Future Direction 5321
Hales Miss Stockman 1228

PRODUCTION EPDs					CARCASS EPDs			\$ VALUES			
CED	BW	WW	YW	Milk	Marb	RE	Fat	\$W	\$F	\$G	\$B
+8	+1.8	+70	+120	+30	+0.66	+0.75	-0.018	+77.68	+87.14	+44.14	+155.04
INDIVIDUAL PERFORMANCE				ULTRASOUND DATA			SCROTAL CIRC.				
Birth Wt.	Adj. 205-day Wt.	Adj. 365-day Wt.	Adj. %IMF	Adj. RE							
79	689	1092	3.77	12.8		40					

Genomic enhanced EPDs.



HALES TEN X E136

BD: 02/28/17 BULL: 19027272 TATTOO: E136

Mytty In Focus
A A R Ten X 7008 S A
15719841

A A R Lady Kelton 5551

Hales Future Direction 4147

Hales 4147 Lady W078

16487248

Hales 9440 Scotch Lady 6118

S A F Focus of E R
Mytty Countess 906
S A V Adaptor 2213
H S A F Lady Kelton 504B

C A Future Direction 5321
Hales Miss Traveler 3014
R R Scotchcap 9440
Hales 692 Rito 249

PRODUCTION EPDs					CARCASS EPDs			\$ VALUES			
CED	BW	WW	YW	Milk	Marb	RE	Fat	\$W	\$F	\$G	\$B
+11	-0.2	+56	+107	+30	+0.7	+0.37	+0.004	+64.84	+77.68	+41.65	+137.97
INDIVIDUAL PERFORMANCE				ULTRASOUND DATA			SCROTAL CIRC.				
Birth Wt.	Adj. 205-day Wt.	Adj. 365-day Wt.	Adj. %IMF	Adj. RE							
64	624	1074	3.56	13.5		41					

Genomic enhanced EPDs.

Breed Averages for Non-Parent Bulls

PRODUCTION EPDs					CARCASS EPDs			\$ VALUES			
CED	BW	WW	YW	Milk	Marb	RE	Fat	\$W	\$F	\$G	\$B
+6	+1.3	+52	+92	+24	+0.53	+0.52	+0.010	+47.85	+48.70	+34.09	+119.16

HALES ANGUS FARMS 24TH ANNUAL SALE *Two Year Old Bulls*



HALES TEN X E142 [DDF]

BD: 03/02/17 BULL: 19027278 TATTOO: E142
 Mytty In Focus S A F Focus of E R
 Mytty Countess 906
 S A V Adaptor 2213
A A R Ten X 7008 S A
 15719841 H S A F Lady Kelton 504B
 A A R Lady Kelton 5551
 Mytty In Focus S A F Focus of E R
 Mytty Countess 906
Hales In Focus Lady 8255
 16309448 Hales Future Direction 4147
 Hales 4147 FD Lady 6294 Hales 9159 Miss Lady 1243

PRODUCTION EPDs					CARCASS EPDs			\$ VALUES			
CED	BW	WW	YW	Milk	Marb	RE	Fat	\$W	\$F	\$G	\$B
+9	+0.1	+67	+117	+28	+0.93	+0.44	-0.001	+69.69	+82.56	+46.83	+167.59
INDIVIDUAL PERFORMANCE				ULTRASOUND DATA				SCROTAL CIRC.			
Birth Wt.	Adj. 205-day Wt.	Adj. 365-day Wt.	Adj. %IMF	Adj. RE							
62	722	1071	4.6	11.8	46						

Genomic enhanced EPDs.



K C F BENNETT FORTRESS REFERENCE SIRE



HALES FORTRESS E152 [DDF]

BD: 03/06/17 BULL: 19027682 TATTOO: E152
 Connealy Consensus KMK Alliance 6595 I87
K C F Bennett Fortress
 17259012 Blinda of Conanga 004
 S S Objective T510 OT26
 Thomas Patricia 9705 Thomas Patricia 71138
 Mytty In Focus S A F Focus of E R
Hales In Focus Lady 8255
 16309448 Mytty Countess 906
 Hales Future Direction 4147
 Hales 4147 FD Lady 6294 Hales 9159 Miss Lady 1243

PRODUCTION EPDs					CARCASS EPDs			\$ VALUES			
CED	BW	WW	YW	Milk	Marb	RE	Fat	\$W	\$F	\$G	\$B
+15	-1.5	+63	+112	+39	+0.65	+0.42	+0.004	+84.48	+78.17	+40.08	+139.21
INDIVIDUAL PERFORMANCE				ULTRASOUND DATA				SCROTAL CIRC.			
Birth Wt.	Adj. 205-day Wt.	Adj. 365-day Wt.	Adj. %IMF	Adj. RE							
68	821	1240	3.72	13.9	39						

Genomic enhanced EPDs.



HALES LEUPOLD E218

BD: 04/24/17 BULL: 19025866 TATTOO: E218
 A A R Leupold 0578 A A R Ten X 7008 S A
GDAR Leupold 298
 17228402 A A R Ankonian 4015
 GDAR Justice 622
 GDAR Miss Blackcap 9232 GDAR Miss Blackcap 556
 Hales Objective Lad 7327 S S Objective T510 OT26
Hales 7327 Lady 2018
 17303895 Hales Bando Queen 9065
 S S Objective T510 OT26
 Hales Objective Lady 8111 Hales Bando Queen 9065

PRODUCTION EPDs					CARCASS EPDs			\$ VALUES			
CED	BW	WW	YW	Milk	Marb	RE	Fat	\$W	\$F	\$G	\$B
+12	+0.2	+57	+96	+27	+0.83	+0.54	-0.004	+63.5	+61.24	+47.09	+149.81
INDIVIDUAL PERFORMANCE				ULTRASOUND DATA				SCROTAL CIRC.			
Birth Wt.	Adj. 205-day Wt.	Adj. 365-day Wt.	Adj. %IMF	Adj. RE							
65	635	1099	4.36	13.3	42						

Genomic enhanced EPDs.



HALES FINAL ANSWER E198 [DDF]

BD: 04/04/17 BULL: 19023790 TATTOO: E198
 Sitz Traveler 8180 G D A R Traveler 71
S A V Final Answer 0035 II
 17320042 Sitz Everelda Entense 1137
 Bon View Bando 598
 S A V Sky Emulous 2124
 S A V Emulous 8145
 Hales In Focus Lad 8018 Mytty In Focus
Hales 8018 Lady 3173
 17754804 Hales Miss 0019 Lady 6141
 V D A R Lucys Boy
 Hales Traveler 6807-236

PRODUCTION EPDs					CARCASS EPDs			\$ VALUES			
CED	BW	WW	YW	Milk	Marb	RE	Fat	\$W	\$F	\$G	\$B
+0	+3.3	+67	+117	+20	+0.31	+0.24	+0.008	+52.68	+93.98	+23.53	+138.82
INDIVIDUAL PERFORMANCE				ULTRASOUND DATA				SCROTAL CIRC.			
Birth Wt.	Adj. 205-day Wt.	Adj. 365-day Wt.	Adj. %IMF	Adj. RE							
76	633	1132	3.78	11.7	40						

Genomic enhanced EPDs.



HALES TOP HAND E177

BD: 03/19/17 BULL: 19041138 TATTOO: E177
 Sitz Upward 307R Connealy Onward
Hales Upward Top Hand 1111
 17046678 Sitz Henrietta Pride 81M
 C A Future Direction 5321
 Hales Bright Star 5162
 Hales Miss Future Lady 3252
 Hales Objective Lad 7327
Hales Dash Lady 1022
 17013023 S S Objective T510 OT26
 Hales Bando Queen 9065
 S S Objective T510 OT26
 Hales Objective Lady 8096 Hales Miss C Traveler 2074

PRODUCTION EPDs					CARCASS EPDs			\$ VALUES			
CED	BW	WW	YW	Milk	Marb	RE	Fat	\$W	\$F	\$G	\$B
+11	-0.5	+49	+84	+29	+0.91	+0.71	+0.006	+58.03	+25.63	+51.25	+111.13
INDIVIDUAL PERFORMANCE				ULTRASOUND DATA				SCROTAL CIRC.			
Birth Wt.	Adj. 205-day Wt.	Adj. 365-day Wt.	Adj. %IMF	Adj. RE							
64	736	1176	4.81	15.5	39						

Genomic enhanced EPDs.



HALES UPWARD TOP HAND E134

BD: 02/26/17 BULL: 19049811 TATTOO: E134
 Sitz Upward 307R Connealy Onward
Hales Upward Top Hand 1111
 17046678 Sitz Henrietta Pride 81M
 C A Future Direction 5321
 Hales Bright Star 5162
 Hales Miss Future Lady 3252
 Hales Traveler 5216
 Hales Mr C Traveler 2040
Hales 5216 Trav HP Lady 9064
 16487244 Hales Miss Future Lady 3252
 Summitcrest High Prime 0H29
 Hales Miss High Prime 4036 Hales Rainlady 4033

PRODUCTION EPDs					CARCASS EPDs			\$ VALUES			
CED	BW	WW	YW	Milk	Marb	RE	Fat	\$W	\$F	\$G	\$B
+9	+0.5	+43	+72	+26	+0.73	+0.55	+0.002	+47.88	-0.33	+46.26	+75.11
INDIVIDUAL PERFORMANCE				ULTRASOUND DATA				SCROTAL CIRC.			
Birth Wt.	Adj. 205-day Wt.	Adj. 365-day Wt.	Adj. %IMF	Adj. RE							
74	649	1108	4.37	14	42						

Genomic enhanced EPDs.



HALES FINAL ANSWER E085

BD: 02/03/17 BULL: 19023786 TATTOO: E085
 Sitz Traveler 8180 G D A R Traveler 71
S A V Final Answer 0035 II
 17320042 Sitz Everelda Entense 1137
 Bon View Bando 598
 S A V Sky Emulous 2124
 S A V Emulous 8145
 Connealy Shrek 4242 GAR-EGL Protege
Hales Schrek Lady 5008
 18227027 Black Shell of Conanga 10
 Connealy Consensus 7229
 Hales Consensus Lady 3118 Hales In Focus Lady 8256

PRODUCTION EPDs					CARCASS EPDs			\$ VALUES			
CED	BW	WW	YW	Milk	Marb	RE	Fat	\$W	\$F	\$G	\$B
-1	+2.7	+75	+126	+17	+0.4	+0.17	+0.036	+62.04	+96.08	+24.01	+134.07
INDIVIDUAL PERFORMANCE				ULTRASOUND DATA				SCROTAL CIRC.			
Birth Wt.	Adj. 205-day Wt.	Adj. 365-day Wt.	Adj. %IMF	Adj. RE							
63	684	975	3.57	9.3	38						

Genomic enhanced EPDs.

PRODUCTION EPDs					CARCASS EPDs			\$ VALUES			
CED	BW	WW	YW	Milk	Marb	RE	Fat	\$W	\$F	\$G	\$B
+6	+1.3	+52	+92	+24	+0.53	+0.52	+0.010	+47.85	+48.70	+34.09	+119.16

HALES ANGUS FARMS 24TH ANNUAL SALE *Two Year Old Bulls*



HALES ENDURANCE E041

BD: 01/14/17 BULL: 19027604 TATTOO: E041
 Sitz Dash 10277 Sitz Upward 307R
Mill Brae Endurance 2118 Sitz Everelda Entense 2665
 17317984 S A V Final Answer 0035
 Mill Brae FA Queen 8035 Mill Brae 338 Queen 5115
 S A V Final Answer 0035 Sitz Traveler 8180
Hales Answer Lady 5072 S A V Emulous 8145
 18262484 Sitz Dash 10277
 Hales Dash Lady 1025 Hales Miss Future Lady 3252

PRODUCTION EPDs					CARCASS EPDs			\$ VALUES			
CED	BW	WW	YW	Milk	Marb	RE	Fat	\$W	\$F	\$G	\$B
+13	+0.3	+50	+89	+17	+0.01	+0.41	+0.043	+43.39	+51.94	+7.52	+82.49
INDIVIDUAL PERFORMANCE				ULTRASOUND DATA				SCROTAL CIRC.			
Birth Wt.	Adj. 205-day Wt.	Adj. 365-day Wt.	Adj. %IMF	Adj. RE	Adj. RE	Adj. RE	Adj. RE				
64	759	1087	2.98	11.6	40						

Genomic enhanced EPDs.



MILL BRAE ENDURANCE 2118 REFERENCE SIRE



HALES 100X E113 [DDF]

BD: 02/12/17 BULL: 19027762 TATTOO: E113
 A A R Ten X 7008 S A Mytty In Focus
G A R 100X A A R Lady Kelton 5551
 17774305 G A R New Design 5050
 G A R Objective A706
 G A R 5050 New Design A91 S Chisum 6175
 Hales Chisum 2016 Hales New Frontier Lady 4084
Hales Z016 Lsdy 5106 Sitz Upward 307R
 18224366 Hales Miss Future Lady 3252
 Hales Upward Lady 3016

PRODUCTION EPDs					CARCASS EPDs			\$ VALUES			
CED	BW	WW	YW	Milk	Marb	RE	Fat	\$W	\$F	\$G	\$B
+12	-0.9	+54	+106	+29	+0.7	+0.54	-0.021	+55.19	+71.75	+42.46	+167.26
INDIVIDUAL PERFORMANCE				ULTRASOUND DATA				SCROTAL CIRC.			
Birth Wt.	Adj. 205-day Wt.	Adj. 365-day Wt.	Adj. %IMF	Adj. RE	Adj. RE	Adj. RE	Adj. RE				
58	734	1054	4.7	11	40						

Genomic enhanced EPDs.



HALES 100X E214 [DDF]

BD: 04/19/17 BULL: 19027763 TATTOO: E214
 A A R Ten X 7008 S A Mytty In Focus
G A R 100X A A R Lady Kelton 5551
 17774305 G A R New Design 5050
 G A R Objective A706
 G A R 5050 New Design A91 Connealy Combination 0188
 Connealy Consensus
Hales Combination 4024 Black Cayra of Conanga 8127
 17897344 Sitz Dash 10277
 Hales Dash Lady 2009 Hales Predestined Lady 8303

PRODUCTION EPDs					CARCASS EPDs			\$ VALUES			
CED	BW	WW	YW	Milk	Marb	RE	Fat	\$W	\$F	\$G	\$B
+14	-1.6	+56	+103	+34	+0.88	+0.73	-0.037	+68.74	+66.85	+52.64	+144.17
INDIVIDUAL PERFORMANCE				ULTRASOUND DATA				SCROTAL CIRC.			
Birth Wt.	Adj. 205-day Wt.	Adj. 365-day Wt.	Adj. %IMF	Adj. RE	Adj. RE	Adj. RE	Adj. RE				
64	670	1076	4.59	10.9	43						

Genomic enhanced EPDs.



HALES LAD 3167 E077 [DDF]

BD: 01/30/17 BULL: 19027582 TATTOO: E077
 Hales In Focus Lad 8018 Mytty In Focus
Hales 8018 Lad 3167 Hales Miss 0019 Lady 6141
 17653805 G T Shear Force
 Hales Shear Force Lady 8103 Hales 216D Traveler 1108
 S A V Pioneer 7301 S A V Final Answer 0035
Hales Pioneer Lady 4150 S A V Blackbird 5297
 17925554 B A R Ext Traveler 205
 Hales Bar Ext Lady 8119 Hales Miss 234D Lady 4138

PRODUCTION EPDs					CARCASS EPDs			\$ VALUES			
CED	BW	WW	YW	Milk	Marb	RE	Fat	\$W	\$F	\$G	\$B
+8	-0.4	+42	+75	+25	+0.61	+0.38	+0.034	+47.19	+23.99	+38.8	+82.66
INDIVIDUAL PERFORMANCE				ULTRASOUND DATA				SCROTAL CIRC.			
Birth Wt.	Adj. 205-day Wt.	Adj. 365-day Wt.	Adj. %IMF	Adj. RE	Adj. RE	Adj. RE	Adj. RE				
70	698	981	3.67	11.8	38						

Genomic enhanced EPDs.



HALES CHISUM E070 [DDF]

BD: 01/23/17 BULL: 19020585 TATTOO: E070
 S Chisum 6175 S Alliance 3313
Hales Chisum 2016 S Gloria 464
 17310071 B/R New Frontier 095
 Hales New Frontier Lady 4084 Hales Miss Design 0059
 G A R Predestined B/R New Design 036
Hales Predestined Lady 8302 G A R Ext 4206
 16316854 Hales Bando 4018
 Hales Bando Queen 9065 Hales New Trend 5065

PRODUCTION EPDs					CARCASS EPDs			\$ VALUES			
CED	BW	WW	YW	Milk	Marb	RE	Fat	\$W	\$F	\$G	\$B
+8	+0.2	+40	+68	+24	-0.06	+0.4	+0.019	+42.82	+20.62	+4.36	+84.23
INDIVIDUAL PERFORMANCE				ULTRASOUND DATA				SCROTAL CIRC.			
Birth Wt.	Adj. 205-day Wt.	Adj. 365-day Wt.	Adj. %IMF	Adj. RE	Adj. RE	Adj. RE	Adj. RE				
62	471	788	3.57	9.8	40						

Genomic enhanced EPDs.



HALES FINAL ANSWER E159

BD: 03/09/17 BULL: 19023789 TATTOO: E159
 Sitz Traveler 8180 G D A R Traveler 71
S A V Final Answer 0035 II Sitz Everelda Entense 1137
 17320042 Bon View Bando 598
 S A V Sky Emulous 2124
 A A R Ten X 7008 S A Mytty In Focus
Hales Ten X Lady 4094 A A R Lady Kelton 5551
 17949250 Riverbend Mile High 3718
 Hales Mile High Lady 8074 Hales Miss Connection 4146

PRODUCTION EPDs					CARCASS EPDs			\$ VALUES			
CED	BW	WW	YW	Milk	Marb	RE	Fat	\$W	\$F	\$G	\$B
+1	+3.2	+85	+150	+15	+0.58	+0.58	+0.028	+65.52	+126.98	+33.18	+174.78
INDIVIDUAL PERFORMANCE				ULTRASOUND DATA				SCROTAL CIRC.			
Birth Wt.	Adj. 205-day Wt.	Adj. 365-day Wt.	Adj. %IMF	Adj. RE	Adj. RE	Adj. RE	Adj. RE				
75	777	1275	4.22	14.6	41						

Genomic enhanced EPDs.



HALES IN SURE E161

BD: 03/10/17 BULL: 19023535 TATTOO: E161
 Mytty In Focus S A F Focus of E R
Connealy In Sure 8524 Mytty Countess 906
 16205036 Connealy Onward
 Entirety of Conanga 5657
 Entreena of Conanga 657 Mytty In Focus
 Hales In Focus Lad 8018 Hales Miss 0019 Lady 6141
Hales Focus Lady 1105 S S Objective T510 0T26
 17036056 Hales Miss Frontier 4049
 Hales Objective Lady 8131

PRODUCTION EPDs					CARCASS EPDs			\$ VALUES			
CED	BW	WW	YW	Milk	Marb	RE	Fat	\$W	\$F	\$G	\$B
+14	-0.8	+62	+108	+31	+1.2	+0.41	+0.004	+68.59	+59.86	+53.11	+146.9
INDIVIDUAL PERFORMANCE				ULTRASOUND DATA				SCROTAL CIRC.			
Birth Wt.	Adj. 205-day Wt.	Adj. 365-day Wt.	Adj. %IMF	Adj. RE	Adj. RE	Adj. RE	Adj. RE				
70	726	1121	4.34	12.1	39						

Genomic enhanced EPDs.

PRODUCTION EPDs					CARCASS EPDs			\$ VALUES			
CED	BW	WW	YW	Milk	Marb	RE	Fat	\$W	\$F	\$G	\$B
+6	+1.3	+52	+92	+24	+0.53	+0.52	+0.010	+47.85	+48.70	+34.09	+119.16

HALES ANGUS FARMS 24TH ANNUAL SALE *Two Year Old Bulls*



HALES 100X E202

BD: 04/08/17 **BULL:** 19027760 **TATTOO:** E202
 A A R Ten X 7008 S A
 Mytty In Focus
 A A R Lady Kelton 5551
 G A R New Design 5050
 G A R Objective A706
G A R 100X
 17774305
 G A R 5050 New Design A91
 A A R Ten X 7008 S A
Hales Z016 Lady 5014
 18225014
 Hales Upward Lady 2108
 Mytty In Focus
 A A R Lady Kelton 5551
 Sitz Upward 307R
 Hales Miss Future Lady 3252

PRODUCTION EPDs					CARCASS EPDs			\$ VALUES			
CED	BW	WW	YW	Milk	Marb	RE	Fat	\$W	\$F	\$G	\$B
+15	-2.2	+53	+91	+31	+0.83	+0.77	-0.018	+60.82	+45.11	+49.42	+150.53
INDIVIDUAL PERFORMANCE				ULTRASOUND DATA			SCROTAL CIRC.				
Birth Wt.	Adj. 205-day Wt.	Adj. 365-day Wt.	Adj. %IMF	Adj. RE	Adj. RE	CIRC.					
60	662	921	4.47	12.7		38					

Genomic enhanced EPDs.



CONNELY IN SURE 8524 REFERENCE SIRE



CONNELY CONSENSUS 7229 REFERENCE SIRE



HALES 3175 TRAVELER E187

BD: 03/25/17 **BULL:** 19051054 **TATTOO:** E187
 Sitz Upward 307R
 Connealy Onward
 Sitz Henrietta Pride 81M
 Hales Future Direction 6123
 Hales Fortune Lady 7086
 S S Objective T510 0T26
 S S Traveler 6807 T510
 S S Miss Rita R011 7R8
 G D A R Oscar 711
 Hales Rito Rito Lady 06
Hales 8018 Traveler 3175
 17811313
 Hales 6123 Direct Lady 8186
Hales Objective Lady 8360
 16378706
 Hales Miss Oscar Lady 2177

PRODUCTION EPDs					CARCASS EPDs			\$ VALUES			
CED	BW	WW	YW	Milk	Marb	RE	Fat	\$W	\$F	\$G	\$B
+6	+3.3	+48	+83	+24	+0.67	+0.41	+0.04	+45.93	+41.25	+38.9	+117.51
INDIVIDUAL PERFORMANCE				ULTRASOUND DATA			SCROTAL CIRC.				
Birth Wt.	Adj. 205-day Wt.	Adj. 365-day Wt.	Adj. %IMF	Adj. RE	Adj. RE	CIRC.					
70	681	1060	4.1	11.8		38					

Genomic enhanced EPDs.



HALES CHISUM E127 [DDF]

BD: 02/23/17 **BULL:** 19049808 **TATTOO:** E127
 S Chisum 6175
 S Alliance 3313
 S Gloria 464
 B/R New Frontier 095
 Hales Miss Design 0059
Hales Chisum 2016
 17310071
 Hales New Frontier Lady 4084
 Sitz Dash 10277
Hales Dash Lady 1022
 17046686
 Hales Miss Future Lady 3252
 Sitz Upward 307R
 Sitz Everelda Entense 2665
 C A Future Direction 5321
 Hales Bright Star 5162

PRODUCTION EPDs					CARCASS EPDs			\$ VALUES			
CED	BW	WW	YW	Milk	Marb	RE	Fat	\$W	\$F	\$G	\$B
+6	+0.5	+48	+75	+22	+0.56	+0.55	+0.027	+47.78	+22.95	+36.64	+121.44
INDIVIDUAL PERFORMANCE				ULTRASOUND DATA			SCROTAL CIRC.				
Birth Wt.	Adj. 205-day Wt.	Adj. 365-day Wt.	Adj. %IMF	Adj. RE	Adj. RE	CIRC.					
72	622	1032	3.32	13.3		43					

Genomic enhanced EPDs.



HALES IN SURE E066 [DDF]

BD: 01/21/17 **BULL:** 19020584 **TATTOO:** E066
 Mytty In Focus
 S A F Focus of E R
 Mytty Countess 906
 Connealy Onward
 Entity of Conanga 5657
Connealy In Sure 8524
 16205036
 Entreena of Conanga 657
 Hales Bando 4018
 Tehama Bando 155
 Hales Sky Lady 837
 Viking 975 G D A R
 Hales Sky Lady Ann
Hales Miss Bandy 7205
 13043574
 Hales Viking Lady 760

PRODUCTION EPDs					CARCASS EPDs			\$ VALUES			
CED	BW	WW	YW	Milk	Marb	RE	Fat	\$W	\$F	\$G	\$B
+13	-1	+45	+77	+36	+0.41	+0.74	-0.003	+61.65	+30.58	+34.88	+116.36
INDIVIDUAL PERFORMANCE				ULTRASOUND DATA			SCROTAL CIRC.				
Birth Wt.	Adj. 205-day Wt.	Adj. 365-day Wt.	Adj. %IMF	Adj. RE	Adj. RE	CIRC.					
76	751	1044	3.63	11.5		41					

Genomic enhanced EPDs.



HALES TRAVELER E221

BD: 04/25/17 **BULL:** 19053767 **TATTOO:** E221
 Sitz Upward 307R
 Connealy Onward
 Sitz Henrietta Pride 81M
 Hales Future Direction 6123
 Hales Fortune Lady 7086
Hales 8018 Traveler 3175
 17811313
 Hales 6123 Direct Lady 8186
 A A R Ten X 7008 S A
 Mytty In Focus
 A A R Lady Kelton 5551
 S S Objective T510 0T26
 Hales Miss Objective 5212
Hales Ten X Lady 4104
 17895905
 Hales Miss Objective 5212
 Hales Miss 616 Lady 3102

PRODUCTION EPDs					CARCASS EPDs			\$ VALUES			
CED	BW	WW	YW	Milk	Marb	RE	Fat	\$W	\$F	\$G	\$B
+7	+4.1	+73	+118	+25	+0.51	+0.59	-0.019	+62.84	+72.66	+37.08	+143.42
INDIVIDUAL PERFORMANCE				ULTRASOUND DATA			SCROTAL CIRC.				
Birth Wt.	Adj. 205-day Wt.	Adj. 365-day Wt.	Adj. %IMF	Adj. RE	Adj. RE	CIRC.					
77	686	1056	4.25	10.6		39					

Genomic enhanced EPDs.



HALES CONSENSUS E173

BD: 03/18/17 **BULL:** 19049814 **TATTOO:** E173
 Connealy Consensus
 KMK Alliance 6595 187
 Blinda of Conanga 004
 Woodhill Admiral 77K
 Blue Cash of Conanga 6020
Connealy Consensus 7229
 16447771
 Blue Lilly of Conanga 16
 Sitz Upward 307R
 Connealy Onward
 Sitz Henrietta Pride 81M
 C A Future Direction 5321
 Hales Bright Star 5162
Hales Upward Lady 3003
 17582474
 Hales Miss Future Lady 3252

PRODUCTION EPDs					CARCASS EPDs			\$ VALUES			
CED	BW	WW	YW	Milk	Marb	RE	Fat	\$W	\$F	\$G	\$B
+4	+2.7	+54	+97	+13	+0.44	+0.71	+0.005	+42.11	+61.97	+34.75	+133.19
INDIVIDUAL PERFORMANCE				ULTRASOUND DATA			SCROTAL CIRC.				
Birth Wt.	Adj. 205-day Wt.	Adj. 365-day Wt.	Adj. %IMF	Adj. RE	Adj. RE	CIRC.					
71	602	1160	3.3	10.6		38					

Genomic enhanced EPDs.

PRODUCTION EPDs					CARCASS EPDs			\$ VALUES			
CED	BW	WW	YW	Milk	Marb	RE	Fat	\$W	\$F	\$G	\$B
+6	+1.3	+52	+92	+24	+0.53	+0.52	+0.010	+47.85	+48.70	+34.09	+119.16

HALES ANGUS FARMS 24TH ANNUAL SALE *Two Year Old Bulls*



HALES LAD E107 [DDF]

BD: 02/10/17 BULL: 19089771 TATTOO: E107
 Hales In Focus Lad 8018 Mytty In Focus
 Hales Miss 0019 Lady 6141
Hales 8018 Lad 3167 G T Shear Force
 17653805 Hales 216D Traveler 1108
 Hales Shear Force Lady 8103
 S S Objective T510 OT26
Hales Objective Lady 8107
 16108306 S S Traveler 6807 T510
 S S Miss Rita R011 7R8
 G D A R Oscar 711
 Hales Traveler 6807-236
 Haleslady Queene 7042

PRODUCTION EPDs					CARCASS EPDs			\$ VALUES			
CED	BW	WW	YW	Milk	Marb	RE	Fat	\$W	\$F	\$G	\$B
+8	+2.1	+53	+80	+17	+0.39	-0.1	+0.026	+46.09	+26.11	+26.64	+58.68
INDIVIDUAL PERFORMANCE				ULTRASOUND DATA				SCROTAL CIRC.			
Birth Wt.	Adj. 205-day Wt.	Adj. 365-day Wt.	Adj. %IMF	Adj. RE	Adj. RE	CIRC.					
	573	895	6.31	9		43					

Genomic enhanced EPDs.



HALES LEUPOLD E170 [DDC]

BD: 03/15/17 BULL: 19025861 TATTOO: E170
 A A R Leupold 0578 A A R Ten X 7008 S A
GDAR Leupold 298 A A R Ankonian 4015
 17228402 GDAR Justice 622
 GDAR Miss Blackcap 9232
 Rito 9M25 of Rita 5F56 Pred
Hales 9M25 Lady 4068
 18051340 Mytty In Focus
 Hales In Focus Lady 8255 Hales 4147 FD Lady 6294

PRODUCTION EPDs					CARCASS EPDs			\$ VALUES			
CED	BW	WW	YW	Milk	Marb	RE	Fat	\$W	\$F	\$G	\$B
+10	+0.1	+44	+74	+32	+0.51	+0.16	+0	+59.77	+33.1	+34.26	+113.48
INDIVIDUAL PERFORMANCE				ULTRASOUND DATA				SCROTAL CIRC.			
Birth Wt.	Adj. 205-day Wt.	Adj. 365-day Wt.	Adj. %IMF	Adj. RE	Adj. RE	CIRC.					
	61	734	1035	4.14		13.4					

Genomic enhanced EPDs.



HALES TOP HAND LADY E213 [DDF]

BD: 04/18/17 BULL: 19041139 TATTOO: E213
 Sitz Upward 307R Connealy Onward
Hales Upward Top Hand 1111 Sitz Henrietta Pride 81M
 17046678 C A Future Direction 5321
 Hales Miss Future Lady 3252 Hales Bright Star 5162
 Sitz Upward 307R Connealy Onward
Hales Upward Lady 1062 Sitz Henrietta Pride 81M
 17012850 Hales Calving Ease 4056
 Hales Miss Calving Ease 6084 Hales Miss Future Lady 4176

PRODUCTION EPDs					CARCASS EPDs			\$ VALUES			
CED	BW	WW	YW	Milk	Marb	RE	Fat	\$W	\$F	\$G	\$B
+2	+2.6	+70	+116	+28	+0.79	+0.56	-0.005	+68.8	+71.66	+44.84	+154.7
INDIVIDUAL PERFORMANCE				ULTRASOUND DATA				SCROTAL CIRC.			
Birth Wt.	Adj. 205-day Wt.	Adj. 365-day Wt.	Adj. %IMF	Adj. RE	Adj. RE	CIRC.					
	73	656	1114	4.25		12.8					

Genomic enhanced EPDs.



HALES TOP HAND E135

BD: 02/28/17 BULL: 19020592 TATTOO: E135
 Sitz Upward 307R Connealy Onward
Hales Upward Top Hand 1111 Sitz Henrietta Pride 81M
 17046678 C A Future Direction 5321
 Hales Miss Future Lady 3252 Hales Bright Star 5162
 S S Objective T510 OT26 Connealy Onward
Hales Objective Lady 7321 Sitz Henrietta Pride 81M
 16040585 Hales Calving Ease 4056
 Hales Miss Design Lady 3109 Hales Miss Future Lady 4176
 Hales Bando Queen 9065

PRODUCTION EPDs					CARCASS EPDs			\$ VALUES			
CED	BW	WW	YW	Milk	Marb	RE	Fat	\$W	\$F	\$G	\$B
-2	+4	+69	+105	+26	+0.4	+0.72	-0.015	+62.39	+48.09	+34.23	+117.42
INDIVIDUAL PERFORMANCE				ULTRASOUND DATA				SCROTAL CIRC.			
Birth Wt.	Adj. 205-day Wt.	Adj. 365-day Wt.	Adj. %IMF	Adj. RE	Adj. RE	CIRC.					
	65	616	1013	3.87		13.5					

Genomic enhanced EPDs.



HALES TOP HAND E171

BD: 03/16/17 BULL: 19020597 TATTOO: E171
 Sitz Upward 307R Connealy Onward
Hales Upward Top Hand 1111 Sitz Henrietta Pride 81M
 17046678 C A Future Direction 5321
 Hales Miss Future Lady 3252 Hales Bright Star 5162
 Sitz Upward 307R Connealy Onward
Hales Upward Lady 2112 Sitz Henrietta Pride 81M
 1792245 C A Future Direction 5321
 Hales Miss Future Lady 3252 Hales Bright Star 5162

PRODUCTION EPDs					CARCASS EPDs			\$ VALUES			
CED	BW	WW	YW	Milk	Marb	RE	Fat	\$W	\$F	\$G	\$B
-2	+3.7	+78	+126	+26	+0.25	+0.89	-0.038	+72.48	+79.12	+26.07	+160.82
INDIVIDUAL PERFORMANCE				ULTRASOUND DATA				SCROTAL CIRC.			
Birth Wt.	Adj. 205-day Wt.	Adj. 365-day Wt.	Adj. %IMF	Adj. RE	Adj. RE	CIRC.					
	75	754	1162	3.48		12.8					

Genomic enhanced EPDs.



HALES 3167 LAD E082 [DDF]

BD: 02/03/17 BULL: 19027613 TATTOO: E082
 Hales In Focus Lad 8018 Mytty In Focus
Hales 8018 Lad 3167 Hales Miss 0019 Lady 6141
 17653805 G T Shear Force
 Hales Shear Force Lady 8103 Hales 216D Traveler 1108
 GAR-EGL Protege Rito 112 of 2536 Rito 616
Hales Portege Lady 1308 L B 6807 Isabel 339
 17271490 Bon View New Design 878
 Hales Miss Design Lady 4242 Hales Miss Queen Lady 1208

PRODUCTION EPDs					CARCASS EPDs			\$ VALUES			
CED	BW	WW	YW	Milk	Marb	RE	Fat	\$W	\$F	\$G	\$B
-3	+4	+60	+97	+18	+0.86	+0.03	+0.013	+38.99	+50.12	+42.37	+122.37
INDIVIDUAL PERFORMANCE				ULTRASOUND DATA				SCROTAL CIRC.			
Birth Wt.	Adj. 205-day Wt.	Adj. 365-day Wt.	Adj. %IMF	Adj. RE	Adj. RE	CIRC.					
	74	756	1055	4.58		11.1					

Genomic enhanced EPDs.



HALES CHISUM E061 [DDF]

BD: 01/19/17 BULL: 19020582 TATTOO: E061
 S Chisum 6175 S Alliance 3313
Hales Chisum 2016 S Gloria 464
 17310071 B/R New Frontier 095
 Hales New Frontier Lady 4084 Hales Miss Design 0059
 S S Objective T510 OT26 S S Traveler 6807 T510
Hales Objective Lady 7324 S S Miss Rita R011 7R8
 16053620 Hales Bando 4018
 Hales Bando Queen 9065 Hales New Trend 5065

PRODUCTION EPDs					CARCASS EPDs			\$ VALUES			
CED	BW	WW	YW	Milk	Marb	RE	Fat	\$W	\$F	\$G	\$B
+8	+0.1	+35	+57	+21	+0.64	+0.37	+0.026	+34.92	+10.79	+39.84	+101.7
INDIVIDUAL PERFORMANCE				ULTRASOUND DATA				SCROTAL CIRC.			
Birth Wt.	Adj. 205-day Wt.	Adj. 365-day Wt.	Adj. %IMF	Adj. RE	Adj. RE	CIRC.					
	67	681	889	4.65		10.3					

Genomic enhanced EPDs.



PRODUCTION EPDs					CARCASS EPDs			\$ VALUES			
CED	BW	WW	YW	Milk	Marb	RE	Fat	\$W	\$F	\$G	\$B
+6	+1.3	+52	+92	+24	+0.53	+0.52	+0.010	+47.85	+48.70	+34.09	+119.16



FALL
Yearling
Bulls

LOTS 32-72

Lot 32

HALES FORTRESS E321



Lot 33

HALES ABSOLUTE E351



HALES FORTRESS E321

BD: 09/28/17 BULL: 19310434 TATTOO: 7321-17
 Connealy Consensus KMK Alliance 6595 I87
K C F Bennett Fortress Blinda of Conanga 004
 17259012 S S Objective T510 0T26
 Thomas Patricia 9705 Thomas Patricia 71138
 Sitz Dash 10277 Sitz Upward 307R
Hales Dash Lady 1042 Sitz Everelda Entense 2665
 17046695 C A Future Direction 5321
 Hales Miss Future Lady 3252 Hales Bright Star 5162

PRODUCTION EPDs					CARCASS EPDs			\$ VALUES			
CED	BW	WW	YW	Milk	Marb	RE	Fat	\$W	\$F	\$G	\$B
+12	-1	+58	+104	+28	+0.41	+0.72	-0.011	+59.44	+66.66	+35.44	+116.19
INDIVIDUAL PERFORMANCE				ULTRASOUND DATA			SCROTAL				
Birth Wt.	Adj. 205-day Wt.	Adj. 365-day Wt.	Adj. %IMF	Adj. RE	CIRC.						
60	714	1100	3.74	14.3	38.5						



HALES ABSOLUTE E351

BD: 10/15/17 BULL: 19308184 TATTOO: 7351
 S A V Final Answer 0035 Sitz Traveler 8180
K C F Bennett Absolute S A V Emulous 8145
 16430795 Wulffs Ext 6106
 Thomas Miss Lucy 5152 Thomas Miss Lucy 3050
 Mytty In Focus S A F Focus of E R
Hales In Focus Lady X131 Mytty Countess 906
 16914833 GDAR SVF Traveler 234D
 Hales Miss 234 Traveler 0133 Hales Miss Ambush 6116

PRODUCTION EPDs					CARCASS EPDs			\$ VALUES			
CED	BW	WW	YW	Milk	Marb	RE	Fat	\$W	\$F	\$G	\$B
+13	-0.4	+65	+115	+24	+0.65	+0.71	+0.024	+65.34	+87.95	+40.2	+158.3
INDIVIDUAL PERFORMANCE				ULTRASOUND DATA			SCROTAL				
Birth Wt.	Adj. 205-day Wt.	Adj. 365-day Wt.	Adj. %IMF	Adj. RE	CIRC.						
65	751	1223	4.18	14.7	44						

Genomic enhanced EPDs.

PRODUCTION EPDs					CARCASS EPDs			\$ VALUES			
CED	BW	WW	YW	Milk	Marb	RE	Fat	\$W	\$F	\$G	\$B
+6	+1.3	+52	+92	+24	+0.53	+0.52	+0.010	+47.85	+48.70	+34.09	+119.16

HALES ANGUS FARMS 24TH ANNUAL SALE *Fall Yearling Bulls*



HALES BUTKUS E326



HALES DISCOVERY E349



HALES DISCOVERY E349 [DDF]

BD: 10/15/17 **BULL:** 19310387 **TATTOO:** 7349
 A A R Ten X 7008 S A Mytty In Focus
V A R Discovery 2240 A A R Lady Kelton 5551
 17262835 Sitz Upward 307R
 Deer Valley Rita 0308 G A R Objective 2345
 S A V Final Answer 0035 Sitz Traveler 8180
Hales Final Answer Lady 4312 S A V Emulous 8145
 18237978 R/M Ironstone 4047
 Hales Ironstone Lady 1243 Hales D806 Good Time Lady 55

PRODUCTION EPDs				CARCASS EPDs			\$ VALUES				
CED	BW	WW	YW	Milk	Marb	RE	Fat	\$W	\$F	\$G	\$B
+5	+1.8	+68	+121	+22	+0.78	+0.58	-0.029	+56.81	+86.51	+45.51	+171.68
INDIVIDUAL PERFORMANCE				ULTRASOUND DATA			SCROTAL CIRC.				
Birth Wt.	Adj. 205-day Wt.	Adj. 365-day Wt.	Adj. %IMF	Adj. RE							
66	726	1131	5.06	11.5	41						

Genomic enhanced EPDs.



HALES BUTKUS E326

BD: 09/29/17 **BULL:** 19310307 **TATTOO:** 7326
 S A V Final Answer 0035 Sitz Traveler 8180
SandPoint Butkus X797 S A V Emulous 8145
 16829413 G A R Grid Maker
 G A R Grid Maker 4603 G A R New Design 741
 Hales Protege Lad 1254 GAR-EGL Protege
Hales Absolute Lady 5425 Hales Objective Lady 8361
 18483743 Hales 4147 Direction 6202
 Hales 6202 Direct Lady 1279 Hales In Focus Lady 8255

PRODUCTION EPDs				CARCASS EPDs			\$ VALUES				
CED	BW	WW	YW	Milk	Marb	RE	Fat	\$W	\$F	\$G	\$B
+13	-1.2	+65	+110	+23	+0.36	+0.61	-0.004	+71.46	+79	+30.48	+138.25
INDIVIDUAL PERFORMANCE				ULTRASOUND DATA			SCROTAL CIRC.				
Birth Wt.	Adj. 205-day Wt.	Adj. 365-day Wt.	Adj. %IMF	Adj. RE							
58	808	1214	3.53	16	41						

Genomic enhanced EPDs. Selling 2/3 interest and full possession.

Breed Averages for Non-Parent Bulls

PRODUCTION EPDs				CARCASS EPDs			\$ VALUES				
CED	BW	WW	YW	Milk	Marb	RE	Fat	\$W	\$F	\$G	\$B
+6	+1.3	+52	+92	+24	+0.53	+0.52	+0.010	+47.85	+48.70	+34.09	+119.16

HALES ANGUS FARMS 24TH ANNUAL SALE *Fall Yearling Bulls*



V A R DISCOVERY 2240 REFERENCE SIRE



CONNELLY COMRADE 1385 REFERENCE SIRE

38 **HALES BUTKUS E328** [AMF]
BD: 09/30/17 BULL: 19313871 TATTOO: 7328
 S A V Final Answer 0035 Sitz Traveler 8180
SandPoint Butkus X797 16829413 S A V Emulous 8145
 G A R Grid Maker
 G A R Grid Maker 4603 G A R New Design 741
 Hyline Right Time 338 Leachman Right Time
Hales Miss Right Time 4209 15004844 Hyline Pride 265
 Mc Clintock of Memory
 Hales Bright Star 5162 Hales Star Lady 073

PRODUCTION EPDs					CARCASS EPDs			\$ VALUES			
CED	BW	WW	YW	Milk	Marb	RE	Fat	\$W	\$F	\$G	\$B
+12	+0.3	+61	+105	+15	+0.19	+0.66	-0.016	+50.98	+73.29	+23.03	+132.11
INDIVIDUAL PERFORMANCE				ULTRASOUND DATA			SCROTAL				
Birth Wt.	Adj. 205-day Wt.	Adj. 365-day Wt.	Adj. %IMF	Adj. RE	CIRC.						
61	673	1183	3.75	13.8	40						

Genomic enhanced EPDs.

40 **HALES 100X E311**
BD: 09/15/17 BULL: 19310481 TATTOO: 7311
 A A R Ten X 7008 S A Mytty In Focus
G A R 100X 17774305 A A R Lady Kelton 5551
 G A R New Design 5050
 G A R Objective A706
 G A R 5050 New Design A91 Connealy Consensus
 Connealy Consensus 7229
Hales 7229 Lady 5409 18509667 Blue Lilly of Conanga 16
 Hales 4147 Direction 6202
 Hales 6202 Direct Lady 1289 Hales Objective Lady 7317

PRODUCTION EPDs					CARCASS EPDs			\$ VALUES			
CED	BW	WW	YW	Milk	Marb	RE	Fat	\$W	\$F	\$G	\$B
+11	-0.4	+46	+86	+28	+0.97	+0.58	-0.027	+49.04	+37.27	+53.13	+132.58
INDIVIDUAL PERFORMANCE				ULTRASOUND DATA			SCROTAL				
Birth Wt.	Adj. 205-day Wt.	Adj. 365-day Wt.	Adj. %IMF	Adj. RE	CIRC.						
63	649	966	4.26	10.5	39						

Genomic enhanced EPDs.

36 **HALES DISCOVERY E352** [DDF]
BD: 10/15/17 BULL: 19310391 TATTOO: 7352
 A A R Ten X 7008 S A Mytty In Focus
V A R Discovery 2240 17262835 A A R Lady Kelton 5551
 Sitz Upward 307R
 Deer Valley Rita 0308 G A R Objective 2345
 Hoover Dam SydGen C C & 7
Hales Hoover Lady 3198 17718552 Erica of Ellston C124
 G A R Predestined
 Hales Predestined Lady 7249 Hales Miss Design Lady 3061

PRODUCTION EPDs					CARCASS EPDs			\$ VALUES			
CED	BW	WW	YW	Milk	Marb	RE	Fat	\$W	\$F	\$G	\$B
+3	+0.4	+69	+124	+28	+1.15	+0.65	-0.018	+73.92	+74.48	+54.86	+156.18
INDIVIDUAL PERFORMANCE				ULTRASOUND DATA			SCROTAL				
Birth Wt.	Adj. 205-day Wt.	Adj. 365-day Wt.	Adj. %IMF	Adj. RE	CIRC.						
65	692	1082	4.73	13.4	38						

Genomic enhanced EPDs.

37 **HALES DISCOVERY E345**
BD: 10/12/17 BULL: 19310401 TATTOO: 7345
 A A R Ten X 7008 S A Mytty In Focus
V A R Discovery 2240 17262835 A A R Lady Kelton 5551
 Sitz Upward 307R
 Deer Valley Rita 0308 G A R Objective 2345
 Sitz Dash 10277 Sitz Upward 307R
Hales Dash Lady 1232 17224433 Sitz Everelda Entense 2665
 C A Future Direction 5321
 Hales Miss Future Lady 3252 Hales Bright Star 5162

PRODUCTION EPDs					CARCASS EPDs			\$ VALUES			
CED	BW	WW	YW	Milk	Marb	RE	Fat	\$W	\$F	\$G	\$B
+10	+0	+66	+112	+28	+0.7	+0.69	+0.002	+75.69	+62.69	+42.05	+155.81
INDIVIDUAL PERFORMANCE				ULTRASOUND DATA			SCROTAL				
Birth Wt.	Adj. 205-day Wt.	Adj. 365-day Wt.	Adj. %IMF	Adj. RE	CIRC.						
69	842	1162	4.17	12.5	41						

Genomic enhanced EPDs. Selling 2/3 interest and full possession.

39 **HALES COMRADE E306** [DDF]
BD: 09/11/17 BULL: 19310359 TATTOO: 7306
 Connealy Consensus 7229 Connealy Consensus
Connealy Comrade 1385 17031465 Blue Lilly of Conanga 16
 G A R New Design 5050
 Happy Gee of Conanga 919 Hap Gina of Conanga 260 4965
 S A V Final Answer 0035 Sitz Traveler 8180
Hales F Answer Lady 5411 18483737 S A V Emulous 8145
 Rito 9Q13 of Rita 5F56 GHM
 Hales 9Q13 Lady 3244 Hales 4147 Direct Lady 8165

PRODUCTION EPDs					CARCASS EPDs			\$ VALUES			
CED	BW	WW	YW	Milk	Marb	RE	Fat	\$W	\$F	\$G	\$B
+20	-4.5	+41	+80	+21	+0.82	+0.36	+0.084	+49.15	+47.06	+41.2	+85.18
INDIVIDUAL PERFORMANCE				ULTRASOUND DATA			SCROTAL				
Birth Wt.	Adj. 205-day Wt.	Adj. 365-day Wt.	Adj. %IMF	Adj. RE	CIRC.						
59	645	1010	4.54	13.4	38						

Genomic enhanced EPDs.

41 **HALES ABSOLUTE E301**
BD: 09/07/17 BULL: 19308170 TATTOO: 7301
 S A V Final Answer 0035 Sitz Traveler 8180
K C F Bennett Absolute 16430795 S A V Emulous 8145
 Wulffs Ext 6106
 Thomas Miss Lucy 5152 Thomas Miss Lucy 3050
 Connealy Combination 0188 Connealy Consensus
Hales Combination Lady 5005 18224348 Black Cayra of Conanga 8127
 Sitz Upward 307R
 Hales Upward Lady 1062 Hales Miss Calving Ease 6084

PRODUCTION EPDs					CARCASS EPDs			\$ VALUES			
CED	BW	WW	YW	Milk	Marb	RE	Fat	\$W	\$F	\$G	\$B
+10	-0.9	+58	+107	+25	+0.81	+0.75	+0.052	+59.35	+76.21	+44.18	+142.22
INDIVIDUAL PERFORMANCE				ULTRASOUND DATA			SCROTAL				
Birth Wt.	Adj. 205-day Wt.	Adj. 365-day Wt.	Adj. %IMF	Adj. RE	CIRC.						
63	674	1130	4.26	14.7	39						

Genomic enhanced EPDs.

PRODUCTION EPDs					CARCASS EPDs			\$ VALUES			
CED	BW	WW	YW	Milk	Marb	RE	Fat	\$W	\$F	\$G	\$B
+6	+1.3	+52	+92	+24	+0.53	+0.52	+0.010	+47.85	+48.70	+34.09	+119.16

HALES ANGUS FARMS 24TH ANNUAL SALE *Fall Yearling Bulls*



HALES DISCOVERY E331

BD: 10/02/17 BULL: 19308178 TATTOO: 7331
 A A R Ten X 7008 S A
V A R Discovery 2240
 17262835
 Deer Valley Rita 0308
 Hales Calving Ease 4056
Hales 5216 Lady 9295
 17273101
 Hales Miss Ideal Lady 1167

PRODUCTION EPDs					CARCASS EPDs			\$ VALUES			
CED	BW	WW	YW	Milk	Marb	RE	Fat	\$W	\$F	\$G	\$B
+10	-0.3	+46	+92	+33	+0.79	+0.56	-0.029	+54.26	+45.81	+49.11	+115.68
INDIVIDUAL PERFORMANCE				ULTRASOUND DATA				SCROTAL CIRC.			
Birth Wt.	Adj. 205-day Wt.	Adj. 365-day Wt.	Adj. %IMF	Adj. RE	Adj. RE	CIRC.					
65	646	1073	4.25	11.8	39						

Genomic enhanced EPDs.



HALES ABSOLUTE E300

BD: 09/07/17 BULL: 19308169 TATTOO: 7300
 S A V Final Answer 0035
K C F Bennett Absolute
 16430795
 Thomas Miss Lucy 5152
 Hales Objective Lad 7327
Hales 7327 Lady 5180
 18476261
 Hales 5216 Traveler Lady70

PRODUCTION EPDs					CARCASS EPDs			\$ VALUES			
CED	BW	WW	YW	Milk	Marb	RE	Fat	\$W	\$F	\$G	\$B
+7	+1.4	+54	+97	+26	+0.57	+0.23	+0.021	+53.53	+62.79	+36.22	+103.94
INDIVIDUAL PERFORMANCE				ULTRASOUND DATA				SCROTAL CIRC.			
Birth Wt.	Adj. 205-day Wt.	Adj. 365-day Wt.	Adj. %IMF	Adj. RE	Adj. RE	CIRC.					
69	704	1123	3.77	12.7	40						

Genomic enhanced EPDs.



HALES ABSOLUTE E347

BD: 10/13/17 BULL: 19308183 TATTOO: 7347
 S A V Final Answer 0035
K C F Bennett Absolute
 16430795
 Thomas Miss Lucy 5152
 Hales Protege Lad 1254
Hales Y254 Lady 5442
 18483750
 Hales Prime Time Lady X120

PRODUCTION EPDs					CARCASS EPDs			\$ VALUES			
CED	BW	WW	YW	Milk	Marb	RE	Fat	\$W	\$F	\$G	\$B
+9	+0.9	+70	+125	+24	+1.08	+0.7	+0.016	+70.58	+101.8	+50.21	+189.73
INDIVIDUAL PERFORMANCE				ULTRASOUND DATA				SCROTAL CIRC.			
Birth Wt.	Adj. 205-day Wt.	Adj. 365-day Wt.	Adj. %IMF	Adj. RE	Adj. RE	CIRC.					
66	723	1192	5.86	13.3	39.5						

Genomic enhanced EPDs.



HALES ABSOLUTE 7309

BD: 09/13/17 BULL: 19308173 TATTOO: 7309
 S A V Final Answer 0035
K C F Bennett Absolute
 16430795
 Thomas Miss Lucy 5152
 Sitz Wisdom 481T
Hales Wisdom Lady 5032
 18224354
 Hales 4147 Direct Lady 7002

PRODUCTION EPDs					CARCASS EPDs			\$ VALUES			
CED	BW	WW	YW	Milk	Marb	RE	Fat	\$W	\$F	\$G	\$B
+7	+1.6	+63	+124	+18	+0.66	+0.52	+0.028	+48.39	+107.83	+37.13	+172.72
INDIVIDUAL PERFORMANCE				ULTRASOUND DATA				SCROTAL CIRC.			
Birth Wt.	Adj. 205-day Wt.	Adj. 365-day Wt.	Adj. %IMF	Adj. RE	Adj. RE	CIRC.					
64	721	1110	4.68	13.5	39.5						

Genomic enhanced EPDs.



HALES BRONC E338

BD: 10/05/17 BULL: 19310553 TATTOO: 7338
 EF Commando 1366
Baldrige Bronc
 18229425
 Baldrige Isabel Y69
 Hales Big Ribeye 4102
Hales Ribeye Lady 9034
 16445392
 Haleslady Queene 7042

PRODUCTION EPDs					CARCASS EPDs			\$ VALUES			
CED	BW	WW	YW	Milk	Marb	RE	Fat	\$W	\$F	\$G	\$B
+12	+0.6	+43	+77	+23	+0.51	+0.05	+0.034	+42.9	+31.54	+30.21	+100.67
INDIVIDUAL PERFORMANCE				ULTRASOUND DATA				SCROTAL CIRC.			
Birth Wt.	Adj. 205-day Wt.	Adj. 365-day Wt.	Adj. %IMF	Adj. RE	Adj. RE	CIRC.					
62	661	1066	3.98	13.3	40						

Genomic enhanced EPDs.



HALES DISCOVERY E365

BD: 10/25/17 BULL: 19310390 TATTOO: 7365
 A A R Ten X 7008 S A
V A R Discovery 2240
 17262835
 Deer Valley Rita 0308
 Hales Objective Lad 8031
Hales 8031 Lady 4188
 18016178
 Hales Objective Lady 7321

PRODUCTION EPDs					CARCASS EPDs			\$ VALUES			
CED	BW	WW	YW	Milk	Marb	RE	Fat	\$W	\$F	\$G	\$B
+4	+2.6	+71	+120	+22	+1.16	+0.46	-0.027	+60.9	+64.76	+55.17	+139.11
INDIVIDUAL PERFORMANCE				ULTRASOUND DATA				SCROTAL CIRC.			
Birth Wt.	Adj. 205-day Wt.	Adj. 365-day Wt.	Adj. %IMF	Adj. RE	Adj. RE	CIRC.					
67	741	1091	5.5	10.9	39						

Genomic enhanced EPDs.



K C F BENNETT ABSOLUTE REFERENCE SIRE



HALES BUTKUS E337 [DDF]

BD: 10/04/17 BULL: 19310318 TATTOO: 7337
 S A V Final Answer 0035
SandPoint Butkus X797
 16829413
 G A R Grid Maker 4603
 C A Future Direction 5321
Hales Miss Future Lady 4109
 14761257
 Hales Miss Design Lady 1206

PRODUCTION EPDs					CARCASS EPDs			\$ VALUES			
CED	BW	WW	YW	Milk	Marb	RE	Fat	\$W	\$F	\$G	\$B
+9	+0.8	+61	+98	+18	+0.74	+0.34	+0.006	+61.27	+47.99	+42.54	+123.49
INDIVIDUAL PERFORMANCE				ULTRASOUND DATA				SCROTAL CIRC.			
Birth Wt.	Adj. 205-day Wt.	Adj. 365-day Wt.	Adj. %IMF	Adj. RE	Adj. RE	CIRC.					
69	696	1027	4.52	12.1	41						

Genomic enhanced EPDs.

PRODUCTION EPDs					CARCASS EPDs			\$ VALUES			
CED	BW	WW	YW	Milk	Marb	RE	Fat	\$W	\$F	\$G	\$B
+6	+1.3	+52	+92	+24	+0.53	+0.52	+0.010	+47.85	+48.70	+34.09	+119.16

HALES ANGUS FARMS 24TH ANNUAL SALE *Fall Yearling Bulls*



HALES ABSOLUTE E346

BD: 10/13/17 BULL: 19308182 TATTOO: 7346
 S A V Final Answer 0035 Sitz Traveler 8180
 K C F Bennett Absolute S A V Emulous 8145
 16430795 Wulffs Ext 6106
 Thomas Miss Lucy 5152 Thomas Miss Lucy 3050
 Hales In Focus Lad 8199 Mytty In Focus
Hales 8199 Focus Lady 1272 Hales Bando Queen 9065
 17224447 S S Objective T510 0T26
 Hales Objective Lady 9203 Hales Miss Oscar Lady 2177

PRODUCTION EPDs					CARCASS EPDs			\$ VALUES			
CED	BW	WW	YW	Milk	Marb	RE	Fat	\$W	\$F	\$G	\$B
+10	-0.7	+42	+71	+25	+0.78	+0.16	+0.039	+45.31	+32.87	+42.02	+92.12
INDIVIDUAL PERFORMANCE				ULTRASOUND DATA				SCROTAL CIRC.			
Birth Wt.	Adj. 205-day Wt.	Adj. 365-day Wt.	Adj. %IMF	Adj. RE							
66	683	1097	4.79	12.3			39				

Genomic enhanced EPDs.



SANDPOINT BUTKUS X797 REFERENCE SIRE



HALES COMBINATION E344

BD: 10/12/17 BULL: 19308181 TATTOO: 7344
 Connealy Consensus KMK Alliance 6595 I87
Connealy Combination 0188 Blinda of Conanga 004
 16748950 Connealy Tobin
 Black Cayra of Conanga 8127 Black Camma of Conanga 4184
 Hales Traveler 5216 Hales Mr C Traveler 2040
Hales Traveler Lady X035 Hales Miss Future Lady 3252
 16739560 Twin Valley Precision E161
 Hales Pesion Lady 6247 Hales Fly Lady 9067

PRODUCTION EPDs					CARCASS EPDs			\$ VALUES			
CED	BW	WW	YW	Milk	Marb	RE	Fat	\$W	\$F	\$G	\$B
+3	+0.6	+35	+71	+36	+0.3	+0.8	+0.022	+41.03	+32.33	+28.71	+108.64
INDIVIDUAL PERFORMANCE				ULTRASOUND DATA				SCROTAL CIRC.			
Birth Wt.	Adj. 205-day Wt.	Adj. 365-day Wt.	Adj. %IMF	Adj. RE							
77	699	1073	4.43	14.8			42.5				

Genomic enhanced EPDs.



HALES BUTKUS E313

BD: 09/17/17 BULL: 19310309 TATTOO: 7313
 S A V Final Answer 0035 Sitz Traveler 8180
SandPoint Butkus X797 S A V Emulous 8145
 16829413 G A R Grid Maker
 G A R Grid Maker 4603 G A R New Design 741
 Hales Protege Lad 1254 GAR-EGL Protege
Hales Y254 Lady 4324 Hales Objective Lady 8361
 18237982 Hales 4147 Direction 6202
 Hales Objective Lady 7317

PRODUCTION EPDs					CARCASS EPDs			\$ VALUES			
CED	BW	WW	YW	Milk	Marb	RE	Fat	\$W	\$F	\$G	\$B
+10	+0.9	+66	+119	+24	+0.47	+0.51	-0.029	+60.09	+90.45	+36.26	+144.23
INDIVIDUAL PERFORMANCE				ULTRASOUND DATA				SCROTAL CIRC.			
Birth Wt.	Adj. 205-day Wt.	Adj. 365-day Wt.	Adj. %IMF	Adj. RE							
62	718	1176	3.84	11.7			40				

Genomic enhanced EPDs.



HALES FINAL ANSWER E322 [DDF]

BD: 09/28/17 BULL: 19310427 TATTOO: 7322
 Sitz Traveler 8180 G D A R Traveler 71
S A V Final Answer 0035 II Sitz Everelda Entense 1137
 17320042 Bon View Bando 598
 S A V Emulous 8145 S A V Sky Emulous 2124
 Connealy Consensus 7229 Connealy Consensus
Hales Consensus Lady 3161 Blue Lilly of Conanga 16
 17858576 N Bar Prime Time D806
 Hales D806 Good Time Lady 55 Hales Miss In Focus 6022

PRODUCTION EPDs					CARCASS EPDs			\$ VALUES			
CED	BW	WW	YW	Milk	Marb	RE	Fat	\$W	\$F	\$G	\$B
+6	+1.6	+63	+117	+14	+0.59	+0.38	+0.024	+49.77	+79.85	+35.46	+134.34
INDIVIDUAL PERFORMANCE				ULTRASOUND DATA				SCROTAL CIRC.			
Birth Wt.	Adj. 205-day Wt.	Adj. 365-day Wt.	Adj. %IMF	Adj. RE							
59	716	1166	5.12	12			39.5				

Genomic enhanced EPDs.



HALES FINAL ANSWER E361

BD: 10/22/17 BULL: 19310428 TATTOO: 7361
 Sitz Traveler 8180 G D A R Traveler 71
S A V Final Answer 0035 II Sitz Everelda Entense 1137
 17320042 Bon View Bando 598
 S A V Emulous 8145 S A V Sky Emulous 2124
 B P F Special Focus 504 Mytty In Focus
Hales Focus Lady 1241 B P F Black Cash 341
 17226288 Hales Traveler 5216
 Hales 5216 Traveler 9312 Hales Miss Ext Lady 1022

PRODUCTION EPDs					CARCASS EPDs			\$ VALUES			
CED	BW	WW	YW	Milk	Marb	RE	Fat	\$W	\$F	\$G	\$B
+11	-0.7	+59	+95	+17	+0.56	+0.45	+0.032	+56.99	+67.96	+35.38	+139.72
INDIVIDUAL PERFORMANCE				ULTRASOUND DATA				SCROTAL CIRC.			
Birth Wt.	Adj. 205-day Wt.	Adj. 365-day Wt.	Adj. %IMF	Adj. RE							
67	778	1138	3.78	13.4			39				

Genomic enhanced EPDs.



HALES FINAL ANSWER E366

BD: 10/26/17 BULL: 19310424 TATTOO: 7366
 Sitz Traveler 8180 G D A R Traveler 71
S A V Final Answer 0035 II Sitz Everelda Entense 1137
 17320042 Bon View Bando 598
 S A V Emulous 8145 S A V Sky Emulous 2124
 Hales Protege Lad 1254 GAR-EGL Protege
Hales 254 Lady 5472 Hales Objective Lady 8361
 18483763 R/M Ironstone 4047
 Hales Ironstone Lady 1306 Hales Miss Lead On 4214

PRODUCTION EPDs					CARCASS EPDs			\$ VALUES			
CED	BW	WW	YW	Milk	Marb	RE	Fat	\$W	\$F	\$G	\$B
+13	-0.4	+49	+98	+26	+0.74	+0.43	+0.023	+53.39	+60.51	+42.12	+126.66
INDIVIDUAL PERFORMANCE				ULTRASOUND DATA				SCROTAL CIRC.			
Birth Wt.	Adj. 205-day Wt.	Adj. 365-day Wt.	Adj. %IMF	Adj. RE							
59	668	1116	4.88	11.5			39				

Genomic enhanced EPDs.



HALES FINAL ANSWER E312

BD: 09/15/17 BULL: 19310420 TATTOO: 7312
 Sitz Traveler 8180 G D A R Traveler 71
S A V Final Answer 0035 II Sitz Everelda Entense 1137
 17320042 Bon View Bando 598
 S A V Emulous 8145 S A V Sky Emulous 2124
 Connealy Capitalist 028 S A V Final Answer 0035
Hales Capitalist Lady 5410 Prides Pita of Conanga 8821
 18509668 BR Midland
 Hales Midland Lady 5223 Hales Miss Queen Lady 1208

PRODUCTION EPDs					CARCASS EPDs			\$ VALUES			
CED	BW	WW	YW	Milk	Marb	RE	Fat	\$W	\$F	\$G	\$B
+16	-2.3	+30	+49	+24	+0.36	+0.13	+0.047	+38.38	+9.39	+26.57	+61.73
INDIVIDUAL PERFORMANCE				ULTRASOUND DATA				SCROTAL CIRC.			
Birth Wt.	Adj. 205-day Wt.	Adj. 365-day Wt.	Adj. %IMF	Adj. RE							
57	746	1048	3.34	12.4			37				

Genomic enhanced EPDs.

PRODUCTION EPDs					CARCASS EPDs			\$ VALUES			
CED	BW	WW	YW	Milk	Marb	RE	Fat	\$W	\$F	\$G	\$B
+6	+1.3	+52	+92	+24	+0.53	+0.52	+0.010	+47.85	+48.70	+34.09	+119.16

HALES ANGUS FARMS 24TH ANNUAL SALE *Fall Yearling Bulls*



HALES BRONC E319

BD: 09/27/17 BULL: 19310550 TATTOO: 7319

EF Commando 1366

EF Complement 8088

Baldrige Bronc
18229425

Riverbend Young Lucy W1470

Styles Upgrade J59

Baldrige Isabel Y69

Baldrige Isabel T935

S S Objective T510 OT26

S S Traveler 6807 T510

Hales Objective Lady 9263

S S Miss Rita R011 7R8

16645757

Paramont Ambush 2172

Hales Miss Ambush 6116

Hales Pine Tar Emily 830

PRODUCTION EPDs					CARCASS EPDs			\$ VALUES			
CED	BW	WW	YW	Milk	Marb	RE	Fat	\$W	\$F	\$G	\$B
+16	-2.7	+50	+86	+19	+0.91	+0.12	+0.016	+50.22	+32.82	+48.24	+65.73
INDIVIDUAL PERFORMANCE					ULTRASOUND DATA			SCROTAL CIRC.			
Birth Wt.	Adj. 205-day Wt.	Adj. 365-day Wt.	Adj. %IMF	Adj. RE							
59	734	1084	4.5	12.4	38						

Genomic enhanced EPDs.



BALDRIDGE BRONC REFERENCE SIRE



HALES LAD 7377

BD: 11/28/17 BULL: 19308195 TATTOO: 7377

Hales Upward Top Hand 1111

Sitz Upward 307R

Hales Y111 Lad 5119

Hales Miss Future Lady 3252

18275718

Sitz Upward 307R

Hales Upward Lady 2003

Hales In Focus Lady 8050

Mytty In Focus

S A F Focus of E R

Hales In Focus Lady 8040

Mytty Countess 906

16108288

GDAR SVF Traveler 234D

Hales Miss 234D Lady 5027

Hales Miss Ext Lady 0127

PRODUCTION EPDs					CARCASS EPDs			\$ VALUES			
CED	BW	WW	YW	Milk	Marb	RE	Fat	\$W	\$F	\$G	\$B
+8	+1.2	+68	+121	+25	+0.19	+0.98	+0.003	+69.99	+83.45	+22.9	+141.86
INDIVIDUAL PERFORMANCE					ULTRASOUND DATA			SCROTAL CIRC.			
Birth Wt.	Adj. 205-day Wt.	Adj. 365-day Wt.	Adj. %IMF	Adj. RE							
71	807	1197	3.77	14.1	41						

Genomic enhanced EPDs.



CONNELLY COMBINATION 0188 REFERENCE SIRE



HALES COMBINATION 7379

BD: 11/28/17 BULL: 19308196 TATTOO: 7379

Connealy Consensus

KMK Alliance 6595 I87

Connealy Combination 0188

Blinda of Conanga 004

16748950

Connealy Tobin

Black Cayra of Conanga 8127

Black Camma of Conanga 4184

Mytty In Focus

S A F Focus of E R

Hales Prime Time Lady X160

Mytty Countess 906

16908576

Hales 216LTD Traveler 0019

Hales Miss 0019 Lady 3160

Hales Miss Bandy 4010

PRODUCTION EPDs					CARCASS EPDs			\$ VALUES			
CED	BW	WW	YW	Milk	Marb	RE	Fat	\$W	\$F	\$G	\$B
+5	+0	+49	+88	+20	+0.59	+0.22	+0.053	+47.71	+52.05	+31.72	+126.81
INDIVIDUAL PERFORMANCE					ULTRASOUND DATA			SCROTAL CIRC.			
Birth Wt.	Adj. 205-day Wt.	Adj. 365-day Wt.	Adj. %IMF	Adj. RE							
63	723	1064	4.25	11.9	40						

Genomic enhanced EPDs.



HALES LAD 7398

BD: 12/11/17 BULL: 19309405 TATTOO: 7398

Hales Upward Top Hand 1111

Sitz Upward 307R

Hales Y111 Lad 5119

Hales Miss Future Lady 3252

18275718

Sitz Upward 307R

Hales Upward Lady 2003

Hales In Focus Lady 8050

Hales Objective Lad 7327

S S Objective T510 OT26

Hales T327 Lady X199

Hales Bando Queen 9065

16957388

S S Objective T510 OT26

Hales Objective Lady 8361

Hales Miss Design Lady 4128

PRODUCTION EPDs					CARCASS EPDs			\$ VALUES			
CED	BW	WW	YW	Milk	Marb	RE	Fat	\$W	\$F	\$G	\$B
+15	-0.5	+62	+108	+30	+0.48	+0.51	+0.011	+69.65	+56.19	+33.23	+126.59
INDIVIDUAL PERFORMANCE					ULTRASOUND DATA			SCROTAL CIRC.			
Birth Wt.	Adj. 205-day Wt.	Adj. 365-day Wt.	Adj. %IMF	Adj. RE							
64	732	1086	3.69	13.2	38.5						

Genomic enhanced EPDs.



HALES BUTKUS E358

BD: 10/20/17 BULL: 19310314 TATTOO: 7358

S A V Final Answer 0035

Sitz Traveler 8180

SandPoint Butkus X797

S A V Emulous 8145

16829413

G A R Grid Maker

G A R Grid Maker 4603

G A R New Design 741

LD Exactly 1912

G A R Precision 1680

Hales Exactly Lady 6240

L D Pride 1489 9124

15691244

GDAR SVF Traveler 234D

Hales Miss 234 Traveler 0084

Hales Rainlady 4024

PRODUCTION EPDs					CARCASS EPDs			\$ VALUES			
CED	BW	WW	YW	Milk	Marb	RE	Fat	\$W	\$F	\$G	\$B
+8	+1.2	+49	+85	+4	+0.48	+0.57	-0.017	+22.4	+40.28	+38.14	+106.78
INDIVIDUAL PERFORMANCE					ULTRASOUND DATA			SCROTAL CIRC.			
Birth Wt.	Adj. 205-day Wt.	Adj. 365-day Wt.	Adj. %IMF	Adj. RE							
67	682	1055	4.09	11.9	40						

Genomic enhanced EPDs.



HALES COMBINATION 7399

BD: 12/11/17 BULL: 19310298 TATTOO: 7399

Connealy Consensus

KMK Alliance 6595 I87

Connealy Combination 0188

Blinda of Conanga 004

16748950

Connealy Tobin

Black Cayra of Conanga 8127

Black Camma of Conanga 4184

S S Objective T510 OT26

S S Traveler 6807 T510

Hales Objective Lady 7324

S S Miss Rita R011 7R8

16053620

Hales Bando 4018

Hales Bando Queen 9065

Hales New Trend 5065

PRODUCTION EPDs					CARCASS EPDs			\$ VALUES			
CED	BW	WW	YW	Milk	Marb	RE	Fat	\$W	\$F	\$G	\$B
+10	-1.7	+53	+88	+21	+0.79	+0.43	+0.012	+53.61	+49.64	+45.04	+127.49
INDIVIDUAL PERFORMANCE					ULTRASOUND DATA			SCROTAL CIRC.			
Birth Wt.	Adj. 205-day Wt.	Adj. 365-day Wt.	Adj. %IMF	Adj. RE							
55	723	1189	5.47	13.3	40						

Genomic enhanced EPDs.

PRODUCTION EPDs					CARCASS EPDs			\$ VALUES			
CED	BW	WW	YW	Milk	Marb	RE	Fat	\$W	\$F	\$G	\$B
+6	+1.3	+52	+92	+24	+0.53	+0.52	+0.010	+47.85	+48.70	+34.09	+119.16

HALES ANGUS FARMS 24TH ANNUAL SALE *Fall Yearling Bulls*



HALES CONSENSUS E339

BD: 10/06/17 BULL: 19312003 TATTOO: 7339
 Connealy Consensus
Connealy Consensus 7229
 16447771
 Blue Lilly of Conanga 16
 Hales Calving Ease 4056
Hales Calving Ease Lady 7014
 15768765
 Hales Miss Front Lady 5092

PRODUCTION EPDs					CARCASS EPDs			\$ VALUES			
CED	BW	WW	YW	Milk	Marb	RE	Fat	\$W	\$F	\$G	\$B
+4	+1.4	+65	+99	+27	+0.53	+0.45	+0.018	+72.35	+58.6	+34.56	+140.58
INDIVIDUAL PERFORMANCE				ULTRASOUND DATA				SCROTAL CIRC.			
Birth Wt.	Adj. 205-day Wt.	Adj. 365-day Wt.	Adj. %IMF	Adj. RE	Adj. RE	Adj. RE	Adj. RE	Adj. RE			
63	738	1076	4.03	10.9				42			

Genomic enhanced EPDs.



CONNELY COMBINATION 0188 REFERENCE SIRE



KCF BENNETT FORTRESS REFERENCE SIRE



HALES PROTEGE LAD 7394

BD: 11/28/17 BULL: 19308203 TATTOO: 7394
 GAR-EGL Protege
Hales Protege Lad 1254
 17224410
 Hales Objective Lady 8361
 N Bar Prime Time D806
Hales Prime Lady X130
 16908430
 Hales Bextor Lady 8277

PRODUCTION EPDs					CARCASS EPDs			\$ VALUES			
CED	BW	WW	YW	Milk	Marb	RE	Fat	\$W	\$F	\$G	\$B
+10	+0.9	+45	+83	+22	+0.59	+0.4	-0.004	+41.17	+39.27	+39.65	+114.55
INDIVIDUAL PERFORMANCE				ULTRASOUND DATA				SCROTAL CIRC.			
Birth Wt.	Adj. 205-day Wt.	Adj. 365-day Wt.	Adj. %IMF	Adj. RE	Adj. RE	Adj. RE	Adj. RE	Adj. RE			
62	670	1038	4.43	12.1				37			

Genomic enhanced EPDs.

PRODUCTION EPDs					CARCASS EPDs			\$ VALUES			
CED	BW	WW	YW	Milk	Marb	RE	Fat	\$W	\$F	\$G	\$B
+6	+1.3	+52	+92	+24	+0.53	+0.52	+0.010	+47.85	+48.70	+34.09	+119.16



HALES FORTRESS E401

BD: 11/17/17 BULL: 19310418 TATTOO: 7401
 Connealy Consensus
K C F Bennett Fortress
 17259012
 Thomas Patricia 9705
 Hales Objective Lad 7327
Hales 7327 Lady 3247
 17822168
 Hales Pondmaker Lady 6034

PRODUCTION EPDs					CARCASS EPDs			\$ VALUES			
CED	BW	WW	YW	Milk	Marb	RE	Fat	\$W	\$F	\$G	\$B
+5	+2.7	+81	+146	+28	+0.57	+0.59	-0.022	+74.68	+120.92	+37.64	+173.5
INDIVIDUAL PERFORMANCE				ULTRASOUND DATA				SCROTAL CIRC.			
Birth Wt.	Adj. 205-day Wt.	Adj. 365-day Wt.	Adj. %IMF	Adj. RE	Adj. RE	Adj. RE	Adj. RE	Adj. RE			
63	702	1136	3.95	13.7				38			

Genomic enhanced EPDs.



HALES COMBINATION E395 [NHF]

BD: 12/09/17 BULL: 19310295 TATTOO: 7395
 Connealy Consensus
Connealy Combination 0188
 16748950
 Black Cayra of Conanga 8127
 GAR-EGL Protege
Hales Portege Lady 1302
 17271484
 Hales 4147 Direct Lady 8154

PRODUCTION EPDs					CARCASS EPDs			\$ VALUES			
CED	BW	WW	YW	Milk	Marb	RE	Fat	\$W	\$F	\$G	\$B
+10	-2.1	+52	+91	+28	+1.09	+0.51	+0.024	+62.05	+50.3	+50.1	+154.14
INDIVIDUAL PERFORMANCE				ULTRASOUND DATA				SCROTAL CIRC.			
Birth Wt.	Adj. 205-day Wt.	Adj. 365-day Wt.	Adj. %IMF	Adj. RE	Adj. RE	Adj. RE	Adj. RE	Adj. RE			
61	735	1045	6.17	14.1				36			

Genomic enhanced EPDs.



HALES PROTEGE LAD 7373 [DDF]

BD: 11/09/17 BULL: 19308192 TATTOO: 7373
 GAR-EGL Protege
Hales Protege Lad 1254
 17224410
 Hales Objective Lady 8361
 B P F Special Focus 504
Hales Focus Lady 1227
 17227761
 Hales Wave Lady 9271

PRODUCTION EPDs					CARCASS EPDs			\$ VALUES			
CED	BW	WW	YW	Milk	Marb	RE	Fat	\$W	\$F	\$G	\$B
+13	-0.2	+52	+82	+28	+0.9	+0.31	+0.059	+66.97	+35.26	+42.34	+120.88
INDIVIDUAL PERFORMANCE				ULTRASOUND DATA				SCROTAL CIRC.			
Birth Wt.	Adj. 205-day Wt.	Adj. 365-day Wt.	Adj. %IMF	Adj. RE	Adj. RE	Adj. RE	Adj. RE	Adj. RE			
66	734	1088	4.23	14.8				36			

Genomic enhanced EPDs.



HALES LAD 7385

BD: 12/04/17 BULL: 19308198 TATTOO: 7385
 Hales Upward Top Hand 1111
Hales Y111 Lad 5119
 18275718
 Hales Upward Lady 2003
 Mytty In Focus
Hales In Focus Lady 1314
 17271379
 Hales Miss Future Lady 5118

PRODUCTION EPDs					CARCASS EPDs			\$ VALUES			
CED	BW	WW	YW	Milk	Marb	RE	Fat	\$W	\$F	\$G	\$B
+12	-0.4	+66	+117	+40	+0.67	+1.03	-0.013	+80.95	+73.72	+45.49	+158.18
INDIVIDUAL PERFORMANCE				ULTRASOUND DATA				SCROTAL CIRC.			
Birth Wt.	Adj. 205-day Wt.	Adj. 365-day Wt.	Adj. %IMF	Adj. RE	Adj. RE	Adj. RE	Adj. RE	Adj. RE			
66	892	1254	3.9	13.7				40			

Genomic enhanced EPDs.

HALES ANGUS FARMS 24TH ANNUAL SALE *Fall Yearling Bulls*



HALES ABSOLUTE E393 [DDF]

BD: 12/08/17 BULL: 19312001 TATTOO: 7393
 S A V Final Answer 0035 Sitz Traveler 8180
 K C F Bennett Absolute S A V Emulous 8145
 16430795 Wulffs Ext 6106
 Thomas Miss Lucy 5152 Thomas Miss Lucy 3050
 Hales Protege Lad 1254 GAR-EGL Protege
Hales Y254 Ladyv 4331 Hales Objective Lady 8361
 18237983 Hales 4147 Direction 6202
 Hales 6202 Direct Lady X086 Hales Predestined Lady 7139

PRODUCTION EPDs					CARCASS EPDs			\$ VALUES			
CED	BW	WW	YW	Milk	Marb	RE	Fat	\$W	\$F	\$G	\$B
+10	+0.4	+58	+104	+32	+1	+0.62	+0.007	+66.25	+57.27	+50.43	+148.8
INDIVIDUAL PERFORMANCE				ULTRASOUND DATA				SCROTAL CIRC.			
Birth Wt.	Adj. 205-day Wt.	Adj. 365-day Wt.		Adj. %IMF	Adj. RE						
69	730	1151		4.64	13.6						35

Genomic enhanced EPDs.



HALES FORTRESS E334

BD: 10/03/17 BULL: 19310421 TATTOO: 7334
 Connealy Consensus KMK Alliance 6595 187
 K C F Bennett Fortress Blinda of Conanga 004
 17259012 S S Objective T510 0T26
 Thomas Patricia 9705 Thomas Patricia 71138
 Connealy Consensus 7229
Hales Consensus Lady 3204 Connealy Consensus
 17713244 Blue Lilly of Conanga 16
 Hales Bextor Lady 9019 C R A Bextor 872 5205 608
 Hales 4102 Ribeye7029

PRODUCTION EPDs					CARCASS EPDs			\$ VALUES			
CED	BW	WW	YW	Milk	Marb	RE	Fat	\$W	\$F	\$G	\$B
+12	-0.7	+46	+78	+19	+0.97	+0.51	-0.016	+46.44	+29.01	+53.81	+100.55
INDIVIDUAL PERFORMANCE				ULTRASOUND DATA				SCROTAL CIRC.			
Birth Wt.	Adj. 205-day Wt.	Adj. 365-day Wt.		Adj. %IMF	Adj. RE						
65	654	988		5.33	11.6						39.5

Genomic enhanced EPDs.



HALES LAD 7389

BD: 12/17/17 BULL: 19308201 TATTOO: 7389
 Hales Upward Top Hand 1111 Sitz Upward 307R
Hales Y111 Lad 5119 Hales Miss Future Lady 3252
 18275718 Sitz Upward 307R
 Hales Upward Lady 2003 Hales In Focus Lady 8050
 B P F Special Focus 504 Mytty In Focus
Hales Focus Lady 1203 B P F Black Cash 341
 17227764 Mytty In Focus
 Hales In focus Lady 9223 Hales 4147 FD Lady 7313

PRODUCTION EPDs					CARCASS EPDs			\$ VALUES			
CED	BW	WW	YW	Milk	Marb	RE	Fat	\$W	\$F	\$G	\$B
+7	+0.5	+55	+88	+29	+0.53	+0.83	+0.007	+70.34	+37.63	+38.23	+142.89
INDIVIDUAL PERFORMANCE				ULTRASOUND DATA				SCROTAL CIRC.			
Birth Wt.	Adj. 205-day Wt.	Adj. 365-day Wt.		Adj. %IMF	Adj. RE						
65	774	1056		4.08	13.5						34

Genomic enhanced EPDs.



HALES DISCOVERY E371

BD: 11/15/17 BULL: 19310415 TATTOO: 7371
 A A R Ten X 7008 S A Mytty In Focus
V A R Discovery 2240 A A R Lady Kelton 5551
 17262835 Sitz Upward 307R
 Deer Valley Rita 0308 G A R Objective 2345
 Hales Nebraska 5032 Baldridge Nebraska 901
Hales 5032 Nebraska lady 196 Hales Miss Design Lady 3112
 15768088 C A Future Direction 5321
 Hales Miss Future Lady 5063 Hales EXT Lady 9017

PRODUCTION EPDs					CARCASS EPDs			\$ VALUES			
CED	BW	WW	YW	Milk	Marb	RE	Fat	\$W	\$F	\$G	\$B
+6	-0.1	+54	+96	+25	+0.74	+0.55	-0.023	+56.75	+47.88	+47.7	+106.26
INDIVIDUAL PERFORMANCE				ULTRASOUND DATA				SCROTAL CIRC.			
Birth Wt.	Adj. 205-day Wt.	Adj. 365-day Wt.		Adj. %IMF	Adj. RE						
64	641	1022		4.38	12.7						39

Genomic enhanced EPDs.

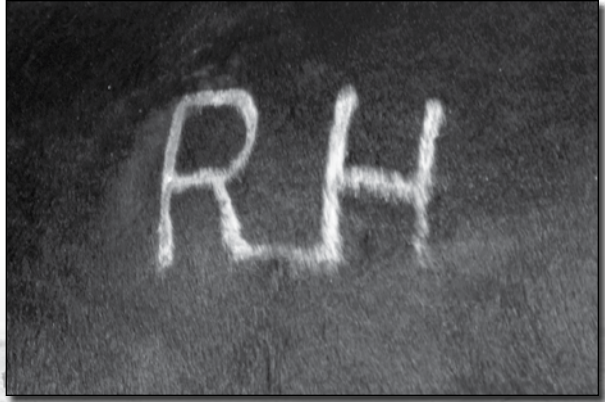


HALES LAD 7402 [AMF]

BD: 12/08/17 BULL: 19308204 TATTOO: 7402
 Hales Upward Top Hand 1111 Sitz Upward 307R
Hales Y111 Lad 5119 Hales Miss Future Lady 3252
 18275718 Sitz Upward 307R
 Hales Upward Lady 2003 Hales In Focus Lady 8050
 Hales Protege Lad 1254 GAR-EGL Protege
Hales Y254 Lady 4320 Hales Objective Lady 8361
 18319565 C A Future Direction 5321
 Hales Miss Future Lady 4207 Hales Miss Trena 8116

PRODUCTION EPDs					CARCASS EPDs			\$ VALUES			
CED	BW	WW	YW	Milk	Marb	RE	Fat	\$W	\$F	\$G	\$B
+5	+2.2	+43	+75	+23	+0.37	+0.62	+0.002	+41.2	+17.39	+31.83	+97.66
INDIVIDUAL PERFORMANCE				ULTRASOUND DATA				SCROTAL CIRC.			
Birth Wt.	Adj. 205-day Wt.	Adj. 365-day Wt.		Adj. %IMF	Adj. RE						
65	713	985		3.71	12.8						39

Genomic enhanced EPDs.



Breed Averages for Non-Parent Bulls

PRODUCTION EPDs					CARCASS EPDs			\$ VALUES			
CED	BW	WW	YW	Milk	Marb	RE	Fat	\$W	\$F	\$G	\$B
+6	+1.3	+52	+92	+24	+0.53	+0.52	+0.010	+47.85	+48.70	+34.09	+119.16



HALES DISCOVER 8077

SPRING Yearling Bulls

LOTS 73-96



HALES LEUPOLD 8007



HALES DISCOVERY 8077

BD: 02/05/18 **BULL:** 19341037 **TATTOO:** 8077
 A A R Ten X 7008 S A Mytty In Focus
V A R Discovery 2240 A A R Lady Kelton 5551
 17262835 Sitz Upward 307R
 Deer Valley Rita 0308 G A R Objective 2345
 Hales 4147 Direction 6202 Hales Future Direction 4147
Hales 6202 Direct Lady X085 Hales Miss Design Lady 3109
 16842439 Hales 216LTD Traveler 0019
 Hales 0019 Traveler Lady 214 Hales Miss Traveler 8027

PRODUCTION EPDs					CARCASS EPDs			\$ VALUES			
CED	BW	WW	YW	Milk	Marb	RE	Fat	\$W	\$F	\$G	\$B
+4	+0.6	+55	+101	+30	+1.17	+0.26	+0.029	+60.89	+49.74	+50.31	+121.1
INDIVIDUAL PERFORMANCE				ULTRASOUND DATA			SCROTAL CIRC.				
Birth Wt.	Adj. 205-day Wt.	Adj. 365-day Wt.	Adj. %IMF	Adj. RE							
74	813	1202	4.83	13.2	35						

Genomic enhanced EPDs.



HALES LEUPOLD 8007

BD: 01/03/18 **BULL:** 19338167 **TATTOO:** 8007
 A A R Leupold 0578 A A R Ten X 7008 S A
GDAR Leupold 298 A A R Ankonian 4015
 17228402 GDAR Justice 622
 GDAR Miss Blackcap 9232 GDAR Miss Blackcap 556
 Connealy Consensus 7229 Connealy Consensus
Hales Consensus Lady 3117 Blue Lilly of Conanga 16
 17612404 C A Future Direction 5321
 Hales Miss Future Lady 3252 Hales Bright Star 5162

PRODUCTION EPDs					CARCASS EPDs			\$ VALUES			
CED	BW	WW	YW	Milk	Marb	RE	Fat	\$W	\$F	\$G	\$B
+11	+0.3	+71	+128	+33	+0.8	+0.58	+0.018	+83.51	+102.67	+42.68	+173.01
INDIVIDUAL PERFORMANCE				ULTRASOUND DATA			SCROTAL CIRC.				
Birth Wt.	Adj. 205-day Wt.	Adj. 365-day Wt.	Adj. %IMF	Adj. RE							
59	793	1182	4.71	12.9	37						

Genomic enhanced EPDs.

PRODUCTION EPDs					CARCASS EPDs			\$ VALUES			
CED	BW	WW	YW	Milk	Marb	RE	Fat	\$W	\$F	\$G	\$B
+6	+1.3	+52	+92	+24	+0.53	+0.52	+0.010	+47.85	+48.70	+34.09	+119.16

HALES ANGUS FARMS 24TH ANNUAL SALE *Spring Yearling Bulls*



Lot 76

HALES TREASURE 8118



Lot 75

HALES ABSOLUTE 8013



HALES ABSOLUTE 8013

BD: 01/07/18 BULL: 19342408 TATTOO: 8013

S A V Final Answer 0035
K C F Bennett Absolute

16430795

Thomas Miss Lucy 5152
Connealy Consensus 7229

Hales Consensus Lady 4083

17961186

Hales Miss Objective 5212

Sitz Traveler 8180
S A V Emulous 8145
Wulffs Ext 6106
Thomas Miss Lucy 3050
Connealy Consensus
Blue Lilly of Conanga 16
S S Objective T510 OT26
Hales Miss 616 Lady 3102

PRODUCTION EPDs				CARCASS EPDs			\$ VALUES				
CED	BW	WW	YW	Milk	Marb	RE	Fat	\$W	\$F	\$G	\$B
+6	+2.7	+83	+147	+34	+0.6	+0.78	+0.013	+82.64	+134.23	+36.96	+192.87
INDIVIDUAL PERFORMANCE				ULTRASOUND DATA			SCROTAL				
Birth Wt.	Adj. 205-day Wt.	Adj. 365-day Wt.	Adj. %IMF	Adj. RE	CIRC.						
65	764	1188	4.03	12.9	38						

Genomic enhanced EPDs.



HALES TREASURE 8118

BD: 03/07/18 BULL: 19344016 TATTOO: 8118

V A R Discovery 2240
MGR Treasure

18156972

SJH Impression of 6108 1614
C R A Bextor 872 5205 608

Hales Bextor Lady 8277

16313816

Hales Miss Objective 5212

A A R Ten X 7008 S A
Deer Valley Rita 0308
Connealy Impression
DRMCTR 111 Rita 6108
B A R Ext Traveler 205
Cra Lady Jaye 608 498 S Easy
S S Objective T510 OT26
Hales Miss 616 Lady 3102

PRODUCTION EPDs				CARCASS EPDs			\$ VALUES				
CED	BW	WW	YW	Milk	Marb	RE	Fat	\$W	\$F	\$G	\$B
+10	+1.2	+65	+118	+28	+0.65	+0.5	-0.02	+65.64	+78.65	+42.85	+130.76
INDIVIDUAL PERFORMANCE				ULTRASOUND DATA			SCROTAL				
Birth Wt.	Adj. 205-day Wt.	Adj. 365-day Wt.	Adj. %IMF	Adj. RE	CIRC.						
63	886				33						

Genomic enhanced EPDs.

Breed Averages for Non-Parent Bulls

PRODUCTION EPDs				CARCASS EPDs			\$ VALUES				
CED	BW	WW	YW	Milk	Marb	RE	Fat	\$W	\$F	\$G	\$B
+6	+1.3	+52	+92	+24	+0.53	+0.52	+0.010	+47.85	+48.70	+34.09	+119.16

HALES ANGUS FARMS 24TH ANNUAL SALE *Spring Yearling Bulls*



HALES FORTRESS 8022

BD: 01/10/18 BULL: 19341045 TATTOO: 8022
 Connealy Consensus KMK Alliance 6595 I87
 K C F Bennett Fortress Blinda of Conanga 004
 17259012 S S Objective T510 0T26
 Thomas Patricia 9705 Thomas Patricia 71138
 Sinclair Net Present Value N Bar Prime Time D806
Hales Net Value Lady 9208 Ideal 4465 of 6807 4286
 16645756 Mytty In Focus
 Hales In Focus 7236 Hales Miss Objective 5215

PRODUCTION EPDs					CARCASS EPDs			\$ VALUES			
CED	BW	WW	YW	Milk	Marb	RE	Fat	\$W	\$F	\$G	\$B
+9	-0.4	+68	+116	+31	+1.01	+0.57	-0.025	+76.23	+80.09	+53.03	+154.78
INDIVIDUAL PERFORMANCE				ULTRASOUND DATA				SCROTAL			
Birth Wt.	Adj. 205-day Wt.	Adj. 365-day Wt.	Adj. %IMF	Adj. RE	Adj. RE	CIRC.					
59	737	1123	4.39	13.1	39						

Genomic enhanced EPDs.



HALES CONSENSUS 8042 [DDP-AMF]

BD: 01/20/18 BULL: 19364778 TATTOO: 8042
 Connealy Consensus KMK Alliance 6595 I87
 Connealy Consensus 7229 Blinda of Conanga 004
 16447771 Woodhill Admiral 77K
 Blue Lilly of Conanga 16 Blue Cash of Conanga 6020
 N Bar Prime Time D806 Gardens Prime Time
Hales Prime Time Lady X124 N Bar Miss Emulous A404
 16917402 G A R Predestined
 Hales Predestined Lady 7276 Hales Miss 878 Design 2241

PRODUCTION EPDs					CARCASS EPDs			\$ VALUES			
CED	BW	WW	YW	Milk	Marb	RE	Fat	\$W	\$F	\$G	\$B
+14	-0.8	+41	+71	+34	+0.97	+0.31	+0.059	+58.62	+14.17	+46.19	+83.41
INDIVIDUAL PERFORMANCE				ULTRASOUND DATA				SCROTAL			
Birth Wt.	Adj. 205-day Wt.	Adj. 365-day Wt.	Adj. %IMF	Adj. RE	Adj. RE	CIRC.					
68	682	1042	4.58	12.1	35						

Genomic enhanced EPDs.



HALES ABSOLUTE 8028 [DDF]

BD: 01/15/18 BULL: 19342386 TATTOO: 8028-18
 S A V Final Answer 0035 Sitz Traveler 8180
 K C F Bennett Absolute S A V Emulous 8145
 16430795 Wulffs Ext 6106
 Thomas Miss Lucy 5152 Thomas Miss Lucy 3050
 Connealy Comrade 1385 Connealy Consensus 7229
Hales Comrade 6068 Happy Gee of Conanga 919
 18563498 Rito 9M25 of Rita 5F56 Pred
 hales 9M25 Lady 4108 Hales In Focus Lady 8255

PRODUCTION EPDs					CARCASS EPDs			\$ VALUES			
CED	BW	WW	YW	Milk	Marb	RE	Fat	\$W	\$F	\$G	\$B
+9	+0.7	+63	+110	+28	+0.74	+0.44	+0.028	+68.36	+75.78	+40.31	+149.28
INDIVIDUAL PERFORMANCE				ULTRASOUND DATA				SCROTAL			
Birth Wt.	Adj. 205-day Wt.	Adj. 365-day Wt.	Adj. %IMF	Adj. RE	Adj. RE	CIRC.					
64	745	1190	3.76	12.5	36						

Genomic enhanced EPDs.



HALES FORTRESS 8078

BD: 02/07/18 BULL: 19341054 TATTOO: 8078
 Connealy Consensus KMK Alliance 6595 I87
 K C F Bennett Fortress Blinda of Conanga 004
 17259012 S S Objective T510 0T26
 Thomas Patricia 9705 Thomas Patricia 71138
 S S Objective T510 0T26 S S Traveler 6807 T510
Hales Objective Lady 8107 S S Miss Rita R011 7R8
 16108306 G D A R Oscar 711
 Haleslady Queene 7042 Hales Traveler 6807-236

PRODUCTION EPDs					CARCASS EPDs			\$ VALUES			
CED	BW	WW	YW	Milk	Marb	RE	Fat	\$W	\$F	\$G	\$B
+4	+3.2	+64	+105	+16	+0.58	+0.44	-0.025	+45.19	+61.31	+41.54	+108.11
INDIVIDUAL PERFORMANCE				ULTRASOUND DATA				SCROTAL			
Birth Wt.	Adj. 205-day Wt.	Adj. 365-day Wt.	Adj. %IMF	Adj. RE	Adj. RE	CIRC.					
79	683	1017	4.22	11	34						

Genomic enhanced EPDs.



HALES CONSENSUS 8071

BD: 02/01/18 BULL: 19342403 TATTOO: 8071
 Connealy Consensus KMK Alliance 6595 I87
 Connealy Consensus 7229 Blinda of Conanga 004
 16447771 Woodhill Admiral 77K
 Blue Lilly of Conanga 16 Blue Cash of Conanga 6020
 Hales Objective Lad 7327 S S Objective T510 0T26
Hales 7327 Objective 1005 Hales Bando Queen 9065
 17013025 Hales 4147 Direction 6202
 Hales 6202 Lady 9009 Hales Pession Lady 6247

PRODUCTION EPDs					CARCASS EPDs			\$ VALUES			
CED	BW	WW	YW	Milk	Marb	RE	Fat	\$W	\$F	\$G	\$B
+14	+0.2	+59	+96	+24	+0.48	+0.52	-0.031	+65.15	+39	+37.96	+107.74
INDIVIDUAL PERFORMANCE				ULTRASOUND DATA				SCROTAL			
Birth Wt.	Adj. 205-day Wt.	Adj. 365-day Wt.	Adj. %IMF	Adj. RE	Adj. RE	CIRC.					
74	819	1134	4.53	12.2	35						

Genomic enhanced EPDs.



HALES FORTRESS 8074

BD: 02/04/18 BULL: 19341017 TATTOO: 8074
 Connealy Consensus KMK Alliance 6595 I87
 K C F Bennett Fortress Blinda of Conanga 004
 17259012 S S Objective T510 0T26
 Thomas Patricia 9705 Thomas Patricia 71138
 Hales In Focus Lad 8018 Mytty In Focus
Hales 8018 Lady 3213 Hales Miss 0019 Lady 6141
 17711319 GDAR SVF Traveler 234D
 Hales Miss 234 Traveler 0078 Hales Trend Lady 6052

PRODUCTION EPDs					CARCASS EPDs			\$ VALUES			
CED	BW	WW	YW	Milk	Marb	RE	Fat	\$W	\$F	\$G	\$B
+12	+0.3	+63	+113	+32	+0.52	+0.57	-0.03	+67.11	+79.48	+39.4	+134.54
INDIVIDUAL PERFORMANCE				ULTRASOUND DATA				SCROTAL			
Birth Wt.	Adj. 205-day Wt.	Adj. 365-day Wt.	Adj. %IMF	Adj. RE	Adj. RE	CIRC.					
57	678	974	4.23	10.2	33						

Genomic enhanced EPDs.



HALES DISCOVERY 8073 [DDF]

BD: 02/03/18 BULL: 19340979 TATTOO: 8073
 A A R Ten X 7008 S A Mytty In Focus
 V A R Discovery 2240 A A R Lady Kelton 5551
 17262835 Sitz Upward 307R
 Deer Valley Rita 0308 G A R Objective 2345
 Hales 018 Focus Lad 1125 Hales In Focus Lad 8018
Hales Y125 Lady 4153 Hales Objective Lady 8207
 17935142 Hales 4147 Direction 6202
 Hales 6202 Direction X054 Hales Direct Lady 8212

PRODUCTION EPDs					CARCASS EPDs			\$ VALUES			
CED	BW	WW	YW	Milk	Marb	RE	Fat	\$W	\$F	\$G	\$B
+11	+0	+68	+122	+36	+0.85	+0.75	-0.021	+78.53	+92.13	+49.22	+169.17
INDIVIDUAL PERFORMANCE				ULTRASOUND DATA				SCROTAL			
Birth Wt.	Adj. 205-day Wt.	Adj. 365-day Wt.	Adj. %IMF	Adj. RE	Adj. RE	CIRC.					
62	742	1145	4.13	12.5	33						

Genomic enhanced EPDs.



HALES DISCOVERY 8016

BD: 01/09/18 BULL: 19340970 TATTOO: 8016
 A A R Ten X 7008 S A Mytty In Focus
 V A R Discovery 2240 A A R Lady Kelton 5551
 17262835 Sitz Upward 307R
 Deer Valley Rita 0308 G A R Objective 2345
 Connealy Combination 0188 Connealy Consensus
Hales Combination 8277 Lady Black Cayra of Conanga 8127
 18224464 C R A Bextor 872 5205 608
 Hales Bextor Lady 8277 Hales Miss Objective 5212

PRODUCTION EPDs					CARCASS EPDs			\$ VALUES			
CED	BW	WW	YW	Milk	Marb	RE	Fat	\$W	\$F	\$G	\$B
+6	-0.1	+61	+111	+29	+0.41	+0.78	-0.069	+64	+68.15	+39.33	+110.85
INDIVIDUAL PERFORMANCE				ULTRASOUND DATA				SCROTAL			
Birth Wt.	Adj. 205-day Wt.	Adj. 365-day Wt.	Adj. %IMF	Adj. RE	Adj. RE	CIRC.					
63	683	1120	3.89	12.2	36						

Genomic enhanced EPDs.

PRODUCTION EPDs					CARCASS EPDs			\$ VALUES			
CED	BW	WW	YW	Milk	Marb	RE	Fat	\$W	\$F	\$G	\$B
+6	+1.3	+52	+92	+24	+0.53	+0.52	+0.010	+47.85	+48.70	+34.09	+119.16

Breed Averages for Non-Parent Bulls

HALES ANGUS FARMS 24TH ANNUAL SALE *Spring Yearling Bulls*



HALES CONSENSUS 8017 [DDC]

BD: 01/09/18 BULL: 19342422 TATTOO: 8017
 Connealy Consensus
Connealy Consensus 7229
 16447771
 Blue Lilly of Conanga 16
 Hales Future Direction 4147
Hales 4147 Direction 8215
 16143013
 Hales Miss Design Lady 2088

PRODUCTION EPDs					CARCASS EPDs			\$ VALUES			
CED	BW	WW	YW	Milk	Marb	RE	Fat	\$W	\$F	\$G	\$B
+9	+0.8	+46	+74	+34	+0.62	+0.02	+0.035	+63.22	+15.21	+36.34	+62.38
INDIVIDUAL PERFORMANCE				ULTRASOUND DATA				SCROTAL			
Birth Wt.	Adj. 205-day Wt.	Adj. 365-day Wt.	Adj. %IMF	Adj. RE	CIRC.						
60	700	1025	4.56	12	38						

Genomic enhanced EPDs.



HALES FORTRESS 8047 [DDF]

BD: 01/23/18 BULL: 19340977 TATTOO: 8047
 Connealy Consensus
K C F Bennett Fortress
 17259012
 Thomas Patricia 9705
 Hales 018 Focus Lad 1125
Hales Y125 Lady 5159
 18339986
 Hales Predestined Emily 7128

PRODUCTION EPDs					CARCASS EPDs			\$ VALUES			
CED	BW	WW	YW	Milk	Marb	RE	Fat	\$W	\$F	\$G	\$B
+14	-1.5	+44	+83	+30	+0.82	+0.67	-0.04	+50.34	+37.52	+52.71	+97.24
INDIVIDUAL PERFORMANCE				ULTRASOUND DATA				SCROTAL			
Birth Wt.	Adj. 205-day Wt.	Adj. 365-day Wt.	Adj. %IMF	Adj. RE	CIRC.						
55	697	1071	5.02	12	39						

Genomic enhanced EPDs.



HALES CHISUM LAD 8002 [DDP]

BD: 01/01/18 BULL: 19361955 TATTOO: 8002
 S Chisum 6175
Hales Chisum 2016
 17310071
 Hales New Frontier Lady 4084
 Hales 216LTD Traveler 0019
Hales 0019 Traveler Lady 206
 15768093
 Hales Fortune Lady 7056

PRODUCTION EPDs					CARCASS EPDs			\$ VALUES			
CED	BW	WW	YW	Milk	Marb	RE	Fat	\$W	\$F	\$G	\$B
+2	+2.6	+57	+87	+18	+0.44	+0.24	+0.019	+45.47	+35.53	+29.63	+112.27
INDIVIDUAL PERFORMANCE				ULTRASOUND DATA				SCROTAL			
Birth Wt.	Adj. 205-day Wt.	Adj. 365-day Wt.	Adj. %IMF	Adj. RE	CIRC.						
69	770	1055	3.86	10.9	34						

Genomic enhanced EPDs.



HALES MANNING 8084

BD: 02/12/18 BULL: 19341136 TATTOO: 8084
 EXAR Denver 2002B
Quaker Hill Manning 4EX9
 17831034
 Quaker Hill Blackcap 0A32
 Mytty In Focus
Hales In focus Lady 9223
 16644562
 Hales 4147 FD Lady 7313

PRODUCTION EPDs					CARCASS EPDs			\$ VALUES			
CED	BW	WW	YW	Milk	Marb	RE	Fat	\$W	\$F	\$G	\$B
+12	+0.8	+59	+90	+25	+0.6	+0.55	+0.033	+63.43	+49.87	+37.3	+136.95
INDIVIDUAL PERFORMANCE				ULTRASOUND DATA				SCROTAL			
Birth Wt.	Adj. 205-day Wt.	Adj. 365-day Wt.	Adj. %IMF	Adj. RE	CIRC.						
53	796	1084	4.42	12	33						

Genomic enhanced EPDs.



HALES BRONC 8019

BD: 01/09/18 BULL: 19341265 TATTOO: 8019
 EF Commando 1366
Baldrige Bronc
 18229425
 Baldrige Isabel Y69
 S S Objective T510 0T26
Hales Bar Ext Lady 8328
 16363963
 Hales Miss Stock Lady 8204

PRODUCTION EPDs					CARCASS EPDs			\$ VALUES			
CED	BW	WW	YW	Milk	Marb	RE	Fat	\$W	\$F	\$G	\$B
+6	+0.3	+50	+72	+33	+0.35	+0.63	-0.013	+66.5	+9.42	+34.12	+63.85
INDIVIDUAL PERFORMANCE				ULTRASOUND DATA				SCROTAL			
Birth Wt.	Adj. 205-day Wt.	Adj. 365-day Wt.	Adj. %IMF	Adj. RE	CIRC.						
69	735	1023	4.23	13.7	34.5						

Genomic enhanced EPDs.



HALES DISCOVERY 8024 [DDF]

BD: 01/13/18 BULL: 19340997 TATTOO: 8024
 A A R Ten X 7008 S A
V A R Discovery 2240
 17262835
 Deer Valley Rita 0308
 Sitz Dash 10277
Hales Dash Lady 2201
 17539237
 Hales Prime Time Lady X124

PRODUCTION EPDs					CARCASS EPDs			\$ VALUES			
CED	BW	WW	YW	Milk	Marb	RE	Fat	\$W	\$F	\$G	\$B
+9	-0.4	+54	+101	+22	+1.41	+0.16	+0.009	+56.53	+47	+57.09	+113.94
INDIVIDUAL PERFORMANCE				ULTRASOUND DATA				SCROTAL			
Birth Wt.	Adj. 205-day Wt.	Adj. 365-day Wt.	Adj. %IMF	Adj. RE	CIRC.						
64	721	1116	5.32	10.6	39						

Genomic enhanced EPDs.



HALES FLAT TOP 8059 [DDF]

BD: 01/29/18 BULL: 19341202 TATTOO: 8059
 Connealy Black Granite
Werner Flat Top 4136
 18094501
 Werner Lady 0304
 S S Objective T510 0T26
Hales Objective Lady 9240
 16644566
 Hales Miss New Trend 5211

PRODUCTION EPDs					CARCASS EPDs			\$ VALUES			
CED	BW	WW	YW	Milk	Marb	RE	Fat	\$W	\$F	\$G	\$B
+11	+0.8	+61	+106	+26	+1.05	+0.43	+0.005	+61.76	+72.73	+51.41	+143.24
INDIVIDUAL PERFORMANCE				ULTRASOUND DATA				SCROTAL			
Birth Wt.	Adj. 205-day Wt.	Adj. 365-day Wt.	Adj. %IMF	Adj. RE	CIRC.						
63	759	1108	4.6	11.1	34						

Genomic enhanced EPDs.



HALES ABOLSUTE 8015

BD: 01/08/18 BULL: 19342393 TATTOO: 8015
 S A V Final Answer 0035
K C F Bennett Absolute
 16430795
 Thomas Miss Lucy 5152
 Hales Upward Top Hand 1111
Hales Y111 Lady 5120
 18250042
 Hales Dash Lady 123

PRODUCTION EPDs					CARCASS EPDs			\$ VALUES			
CED	BW	WW	YW	Milk	Marb	RE	Fat	\$W	\$F	\$G	\$B
+7	+1.5	+60	+96	+17	+0.4	+0.57	+0.031	+56.69	+49.1	+30.24	+110.69
INDIVIDUAL PERFORMANCE				ULTRASOUND DATA				SCROTAL			
Birth Wt.	Adj. 205-day Wt.	Adj. 365-day Wt.	Adj. %IMF	Adj. RE	CIRC.						
71	712	1114	4.16	11.4	35						

Genomic enhanced EPDs.

Breed Averages for Non-Parent Bulls

PRODUCTION EPDs					CARCASS EPDs			\$ VALUES			
CED	BW	WW	YW	Milk	Marb	RE	Fat	\$W	\$F	\$G	\$B
+6	+1.3	+52	+92	+24	+0.53	+0.52	+0.010	+47.85	+48.70	+34.09	+119.16

HALES ANGUS FARMS 24TH ANNUAL SALE *Spring Yearling Bulls*



HALES FORTRESS 8027 [DDF]

BD: 01/14/18 BULL: 19341010 TATTOO: 8027
 Connealy Consensus
K C F Bennett Fortress
 17259012
 Thomas Patricia 9705
 Rito 9M25 of Rita 5F56 Pred
Hales 9M25 Lady 3267
 17822180
 Hales In Focus Lady 9216

PRODUCTION EPDs					CARCASS EPDs			\$ VALUES			
CED	BW	WW	YW	Milk	Marb	RE	Fat	\$W	\$F	\$G	\$B
+10	-0.8	+76	+127	+17	+0.75	+0.7	-0.033	+73	+91.78	+47.67	+152.53
INDIVIDUAL PERFORMANCE				ULTRASOUND DATA				SCROTAL CIRC.			
Birth Wt.		Adj. 205-day Wt.		Adj. 365-day Wt.		Adj. %IMF		Adj. RE		SCROTAL CIRC.	
49		741		1023		5.37		10.6		33.5	

Genomic enhanced EPDs.



HALES COMRADE 8043

BD: 01/20/18 BULL: 19338169 TATTOO: 8043
 Connealy Consensus 7229
Connealy Comrade 1385
 17031465
 Happy Gee of Conanga 919
 Connealy Capitalist 028
Hales Lady D076
 18777106
 Hales 80187 Lady 3174

PRODUCTION EPDs					CARCASS EPDs			\$ VALUES			
CED	BW	WW	YW	Milk	Marb	RE	Fat	\$W	\$F	\$G	\$B
+4	+2.2	+70	+119	+19	+0.75	+0.93	+0.015	+67.44	+89.69	+45.84	+164.17
INDIVIDUAL PERFORMANCE				ULTRASOUND DATA				SCROTAL CIRC.			
Birth Wt.		Adj. 205-day Wt.		Adj. 365-day Wt.		Adj. %IMF		Adj. RE		SCROTAL CIRC.	
69		722		1090		4.28		13.7		35	

Genomic enhanced EPDs.



HALES BUTKUS 8020

BD: 01/10/18 BULL: 19340862 TATTOO: 8020
 S A V Final Answer 0035
SandPoint Butkus X797
 16829413
 G A R Grid Maker 4603
 Connealy Combination 0188
Hales Combination Lady 4057
 18440755
 Hales Miss Right Time 4209

PRODUCTION EPDs					CARCASS EPDs			\$ VALUES			
CED	BW	WW	YW	Milk	Marb	RE	Fat	\$W	\$F	\$G	\$B
+4	+0.9	+69	+106	+8	+0.16	+0.47	+0.008	+56.38	+70.57	+20.33	+93.2
INDIVIDUAL PERFORMANCE				ULTRASOUND DATA				SCROTAL CIRC.			
Birth Wt.		Adj. 205-day Wt.		Adj. 365-day Wt.		Adj. %IMF		Adj. RE		SCROTAL CIRC.	
67		647		1042		3.48		10.9		35	

Genomic enhanced EPDs.



HALES FORTRESS 8080

BD: 02/08/18 BULL: 19341019 TATTOO: 8080
 Connealy Consensus
K C F Bennett Fortress
 17259012
 Thomas Patricia 9705
 Sitz Upward 307R
Hales Upward Lady 3089
 17612399
 Hales Miss Future Lady 3252

PRODUCTION EPDs					CARCASS EPDs			\$ VALUES			
CED	BW	WW	YW	Milk	Marb	RE	Fat	\$W	\$F	\$G	\$B
+9	+0.6	+62	+109	+31	+0.42	+0.68	-0.022	+69.18	+66.86	+34.76	+135.72
INDIVIDUAL PERFORMANCE				ULTRASOUND DATA				SCROTAL CIRC.			
Birth Wt.		Adj. 205-day Wt.		Adj. 365-day Wt.		Adj. %IMF		Adj. RE		SCROTAL CIRC.	
69		728		1090		4.04		10.9		35	

Genomic enhanced EPDs.



Driving the science of better breeding

There's little room for error in the cattle business. Producers need the most advanced information to make smart selection decisions, and Angus Genetics Inc. (AGI) provides it through genomic-enhanced expected progeny differences (GE-EPDs). EPDs that traditionally contained all pedigree, performance and progeny information now also include results from available genomic, or DNA, tests. Breeders who use genomic technology give buyers access to AGI-generated GE-EPDs that provide:

- Increased predictability and decreased risk for young and unproven animals due to enhanced accuracy of EPDs
- Better characterization of genetics for difficult-to-measure performance traits (such as carcass traits, maternal traits and feed efficiency)
- The ability to make more rapid progress for traits that are important to you, due to:
 - more accurate selection
 - easier identification of genetic outliers
 - the ability to propagate young animals with confidence earlier in their lives

In fact, GE-EPDs on unproven animals have the same amount of accuracy as if they had recorded 8-20 calves, depending on the trait. That's valuable insight, offered regularly through the breed's weekly national cattle evaluation at www.angus.org.

How do you know if EPDs are genomic-enhanced?

Ask your breeder, refer to the registration paper, or look for the AGI GE-EPD logo or those of partnering labs Zoetis (HD50K, i50K) or GeneSeek (GGP-HD, GGP-LD).



PRODUCTION EPDs					CARCASS EPDs			\$ VALUES			
CED	BW	WW	YW	Milk	Marb	RE	Fat	\$W	\$F	\$G	\$B
+6	+1.3	+52	+92	+24	+0.53	+0.52	+0.010	+47.85	+48.70	+34.09	+119.16

**TWO
YEAR OLD
Bred Heifers**
LOTS 100-120



HALES IN SURE E197



HALES TOP HAND LADY E212

100

HALES TOP HAND LADY E212

BD: 04/18/17 COW: 19020602 TATT00: E212
Sitz Upward 307R
Hales Upward Top Hand 1111
17046678
Hales Miss Future Lady 3252
Sitz Dash 10277
Hales Dash Lady 1024
17046688
Hales Miss Future Lady 3252
Connealy Onward
Sitz Henrietta Pride 81M
C A Future Direction 5321
Hales Bright Star 5162
Sitz Upward 307R
Sitz Everelda Entense 2665
C A Future Direction 5321
Hales Bright Star 5162

PRODUCTION EPDs					CARCASS EPDs			\$ VALUES			
CED	BW	WW	YW	Milk	Marb	RE	Fat	\$W	\$F	\$G	\$B
+5	+1.9	+54	+78	+21	+0.76	+0.85	+0.014	+51.8	+13.74	+47.12	+117.56
INDIVIDUAL PERFORMANCE					ULTRASOUND DATA						
Birth Wt.	Adj. 205-day Wt.	Adj. 365-day Wt.	Adj. %IMF	Adj. RE							
66	647	761	8.67	10.5							

Genomic enhanced EPDs. Due 4-15-19 TO G A R 100X (17774305). PE from 2-11-19 to E073 (19020586).
Confirmed bred to AI.

101

HALES IN SURE E197

BD: 04/04/17 COW: 19023536 TATT00: E197
Mytty In Focus
Connealy In Sure 8524
16205036
Entreena of Conanga 657
S S Objective T510 OT26
Hales Objective Lady 9231
16644564
Hales Miss Future Lady 3040
S A F Focus of E R
Mytty Countess 906
Connealy Onward
Entity of Conanga 5657
S S Traveler 6807 T510
S S Miss Rita R011 7R8
C A Future Direction 5321
Hales Lady Kruggerand 0042

PRODUCTION EPDs					CARCASS EPDs			\$ VALUES			
CED	BW	WW	YW	Milk	Marb	RE	Fat	\$W	\$F	\$G	\$B
+13	+0	+54	+82	+34	+0.71	+0.73	-0.008	+69.83	+27.55	+46.39	+122.62
INDIVIDUAL PERFORMANCE					ULTRASOUND DATA						
Birth Wt.	Adj. 205-day Wt.	Adj. 365-day Wt.	Adj. %IMF	Adj. RE							
67	721	881	6.37	10.6							

Genomic enhanced EPDs. Due 4-15-19 TO G A R 100X (17774305). PE from 2-11-19 to E073 (19020586).
Confirmed bred to AI.

Breed Averages for Non-Parent Cows

PRODUCTION EPDs					CARCASS EPDs			\$ VALUES			
CED	BW	WW	YW	Milk	Marb	RE	Fat	\$W	\$F	\$G	\$B
+6	+1.4	+51	+91	+24	+0.58	+0.54	+0.007	+46.44	+47.07	+34.80	+118.31

HALES ANGUS FARMS 24TH ANNUAL SALE *Two Year Old Bred Heifers*



HALES CONSENSUS LADY E128



HALES TRAVELER LADY E215

102 HALES CONSENSUS LADY E128

BD: 02/23/17 COW: 19022203 TATTOO: E128
 Connealy Consensus KMK Alliance 6595 I87
Connealy Consensus 7229 16447771 Blinda of Conanga 004
 Woodhill Admiral 77K
 Blue Lilly of Conanga 16 Blue Cash of Conanga 6020
 Hales Objective Lad 7327 S S Objective T510 OT26
hales 7327 Lady 2137 17335667 Hales Bando Queen 9065
 S S Objective T510 OT26
 Hales Objective Lady 7324 Hales Bando Queen 9065

PRODUCTION EPDs					CARCASS EPDs			\$ VALUES			
CED	BW	WW	YW	Milk	Marb	RE	Fat	\$W	\$F	\$G	\$B
+4	+2.1	+69	+109	+20	+0.84	+0.34	+0.028	+68	+65.4	+44.53	+114.37
INDIVIDUAL PERFORMANCE					ULTRASOUND DATA						
Birth Wt.	Adj. 205-day Wt.	Adj. 365-day Wt.	Adj. %IMF				Adj. RE				
67	570	850	6.48				9.9				

Genomic enhanced EPDs. Due 11-13-19 TO G A R Sure Fire (17328461). PE from 2-11-19 to E073 (19020586).

103 HALES TRAVELER LADY E215 [DDF]

BD: 04/20/17 COW: 19041223 TATTOO: E215
 Sitz Upward 307R Connealy Onward
Hales 8018 Traveler 3175 17811313 Sitz Henrietta Pride 81M
 Hales Future Direction 6123
 Hales Fortune Lady 7086
 Hales 6123 Direct Lady 8186
 G A R Predestined
Hales Predestined Lady 8085 16109624 B/R New Design 036
 G A R Ext 4206
 GDAR SVF Traveler 234D
 Hales Miss 234 Traveler 0078 Hales Trend Lady 6052

PRODUCTION EPDs					CARCASS EPDs			\$ VALUES			
CED	BW	WW	YW	Milk	Marb	RE	Fat	\$W	\$F	\$G	\$B
+9	+2.4	+37	+66	+24	+0.85	+0.54	+0.017	+36.53	+15.09	+48.83	+92.11
INDIVIDUAL PERFORMANCE					ULTRASOUND DATA						
Birth Wt.	Adj. 205-day Wt.	Adj. 365-day Wt.	Adj. %IMF				Adj. RE				
65	531	824	6.33				9.7				

Genomic enhanced EPDs. Due 4-26-19 TO Connealy Comrade 1385 (17031465). PE from 2-11-19 to E073 (19020586). Confirmed bred to AI.

PRODUCTION EPDs					CARCASS EPDs			\$ VALUES			
CED	BW	WW	YW	Milk	Marb	RE	Fat	\$W	\$F	\$G	\$B
+6	+1.4	+51	+91	+24	+0.58	+0.54	+0.007	+46.44	+47.07	+34.80	+118.31

Breed Averages for Non-Parent Cows

HALES ANGUS FARMS 24TH ANNUAL SALE *Two Year Old Bred Heifers*

104 HALES TRAVELER3175 LADY E182

BD: 03/21/17 COW: 19025867 TATTOO: E182
 Sitz Upward 307R Connealy Onward
 Hales 8018 Traveler 3175 Sitz Henrietta Pride 81M
 17811313 Hales Future Direction 6123
 Hales 6123 Direct Lady 8186 Hales Fortune Lady 7086
 Hales Objective Lad 7327 S S Objective T510 OT26
 Hales 7327 Obj Lady X053 Hales Bando Queen 9065
 16740241 S S Objective T510 OT26
 Hales Objective Lady 8028 Hales Miss Design Lady 4096

PRODUCTION EPDs					CARCASS EPDs			\$ VALUES			
CED	BW	WW	YW	Milk	Marb	RE	Fat	\$W	\$F	\$G	\$B
+15	-0.6	+46	+86	+31	+1.02	+0.21	+0.019	+54.84	+23.19	+48.43	+96.79
INDIVIDUAL PERFORMANCE					ULTRASOUND DATA						
Birth Wt.	Adj. 205-day Wt.	Adj. 365-day Wt.			Adj. %IMF						
65	610	922			7.97					9.4	

Genomic enhanced EPDs. Due 4-15-19 TO QHF WWA Black Onyx 5Q11 (18463791). PE from 2-11-19 to E073 (19020586). Confirmed bred to AI.

105 HALES TOP HAND LADY E184

BD: 03/23/17 COW: 19042379 TATTOO: E184
 Sitz Upward 307R Connealy Onward
 Hales Upward Top Hand 1111 Sitz Henrietta Pride 81M
 17046678 C A Future Direction 5321
 Hales Miss Future Lady 3252 Hales Bright Star 5162
 N Bar Prime Time D806 Gardens Prime Time
 Hales Prime Time Lady X181 N Bar Miss Emulous A404
 16957999 Hales Future Direction 4147
 Hales Miss Design Lady 3071

PRODUCTION EPDs					CARCASS EPDs			\$ VALUES			
CED	BW	WW	YW	Milk	Marb	RE	Fat	\$W	\$F	\$G	\$B
+5	+0.9	+34	+53	+34	+0.71	+0.56	+0.002	+42.61	-14.27	+46.55	+71.52
INDIVIDUAL PERFORMANCE					ULTRASOUND DATA						
Birth Wt.	Adj. 205-day Wt.	Adj. 365-day Wt.			Adj. %IMF						
70	530	743			5.77					8.6	

Genomic enhanced EPDs. Due 4-15-19 TO MGR Treasure (18156972). PE from 2-11-19 to E073 (19020586). Confirmed bred to AI.

106 HALES COMRADE LADY E208 [DDF]

BD: 04/12/17 COW: 19027482 TATTOO: E208
 Connealy Consensus 7229 Connealy Consensus
 Connealy Comrade 1385 Blue Lilly of Conanga 16
 17031465 G A R New Design 5050
 Happy Gee of Conanga 919 Hap Gina of Conanga 260 4965
 Connealy Combination 0188 Connealy Consensus
 Hales Combination Lady 5085 Black Cayra of Conanga 8127
 18224462 B/R New Frontier 095
 Hales New Frontier Lady 4084 Hales Miss Design 0059

PRODUCTION EPDs					CARCASS EPDs			\$ VALUES			
CED	BW	WW	YW	Milk	Marb	RE	Fat	\$W	\$F	\$G	\$B
+12	-0.6	+51	+92	+20	+0.54	+0.79	-0.012	+51.57	+54.48	+41.88	+115.56
INDIVIDUAL PERFORMANCE					ULTRASOUND DATA						
Birth Wt.	Adj. 205-day Wt.	Adj. 365-day Wt.			Adj. %IMF						
61	601	838			4.2					9.9	

Genomic enhanced EPDs. Due 4-26-19 TO G A R Sure Fire (17328461). PE from 2-11-19 to E073 (19020586). Confirmed bred to AI.



CONNELLY COMRADE 1385 REFERENCE SIRE

107 HALES BUTKUS LADY E206

BD: 04/11/17 COW: 19027371 TATTOO: E206
 S A V Final Answer 0035 Sitz Traveler 8180
 SandPoint Butkus X797 S A V Emulous 8145
 16829413 G A R Grid Maker
 G A R Grid Maker 4603 G A R New Design 741
 Connealy In Sure 8524 Mytty In Focus
 Hales In Sure Lady 5021 Entreena of Conanga 657
 18225015 Hales Traveler 5216
 Hales Traveler Lady X074 Hales 9M9 Rito 8063

PRODUCTION EPDs					CARCASS EPDs			\$ VALUES			
CED	BW	WW	YW	Milk	Marb	RE	Fat	\$W	\$F	\$G	\$B
+7	+1.4	+57	+102	+20	+0.73	+0.19	+0.018	+51.69	+71.79	+40.58	+124.65
INDIVIDUAL PERFORMANCE					ULTRASOUND DATA						
Birth Wt.	Adj. 205-day Wt.	Adj. 365-day Wt.			Adj. %IMF						
69	585	862			5.12					8.7	

Genomic enhanced EPDs. Due 5-30-19 TO Connealy Comrade 1385 (17031465). PE from 2-11-19 to E073 (19020586). Confirmed bred to AI.



SANDPOINT BUTKUS X797 REFERENCE SIRE

108 HALES BUTKUS LADY E222

BD: 05/01/17 COW: 19027356 TATTOO: E222
 S A V Final Answer 0035 Sitz Traveler 8180
 SandPoint Butkus X797 S A V Emulous 8145
 16829413 G A R Grid Maker
 G A R Grid Maker 4603 G A R New Design 741
 Hales 018 Focus Lad 1125 Hales In Focus Lad 8018
 Hales Y125 Lady 5141 Hales Objective Lady 8207
 18364139 Sitz Upward 307R
 Hales Upard Lady 1053 Hales Future Lady 3219

PRODUCTION EPDs					CARCASS EPDs			\$ VALUES			
CED	BW	WW	YW	Milk	Marb	RE	Fat	\$W	\$F	\$G	\$B
+0	+3.3	+84	+139	+17	+0.46	+0.53	+0.006	+67.2	+104.76	+30.42	+164.34
INDIVIDUAL PERFORMANCE					ULTRASOUND DATA						
Birth Wt.	Adj. 205-day Wt.	Adj. 365-day Wt.			Adj. %IMF						
68	757	971			5.24					10	

Genomic enhanced EPDs. Due 5-2-19 TO G A R 100X (17774305). PE from 2-11-19 to E073 (19020586). Confirmed bred to AI.

109 HALES TRAVELER LADY E210

BD: 04/13/17 COW: 19041222 TATTOO: E210
 Sitz Upward 307R Connealy Onward
 Hales 8018 Traveler 3175 Sitz Henrietta Pride 81M
 17811313 Hales Future Direction 6123
 Hales 6123 Direct Lady 8186 Hales Fortune Lady 7086
 S S Objective T510 OT26 S S Traveler 6807 T510
 Hales Objective Lady 8111 S S Miss Rita R011 7R8
 16108308 Hales Bando 4018
 Hales Bando Queen 9065 Hales New Trend 5065

PRODUCTION EPDs					CARCASS EPDs			\$ VALUES			
CED	BW	WW	YW	Milk	Marb	RE	Fat	\$W	\$F	\$G	\$B
+14	-0.6	+44	+71	+20	+0.68	+0.55	+0.019	+44.92	+17.84	+43.2	+98.67
INDIVIDUAL PERFORMANCE					ULTRASOUND DATA						
Birth Wt.	Adj. 205-day Wt.	Adj. 365-day Wt.			Adj. %IMF						
62	617	878			7.93					10.8	

Genomic enhanced EPDs. Due 5-30-19 TO MGR Treasure (18156972). PE from 2-11-19 to E073 (19020586). Confirmed bred to AI.

PRODUCTION EPDs					CARCASS EPDs			\$ VALUES			
CED	BW	WW	YW	Milk	Marb	RE	Fat	\$W	\$F	\$G	\$B
+6	+1.4	+51	+91	+24	+0.58	+0.54	+0.007	+46.44	+47.07	+34.80	+118.31

HALES ANGUS FARMS 24TH ANNUAL SALE *Two Year Old Bred Heifers*



K C F BENNET FORTRESS REFERENCE SIRE

HALES POWER LADY E220
BD: 04/25/17 COW: 19020603 TATTOO: E220
 Rito 9M25 of Rita 5F56 Pred G A R Predestined
 Hales 9M25 Power 4080 Rita 5F56 of 1198 FD
 17897309 Mytty In Focus
 Hales In Focus Lady 8255 Hales 4147 FD Lady 6294
 Connealy Consensus 7229 Connealy Consensus
Hales Consensus lady 3127 Blue Lilly of Conanga 16
 17612406 C A Future Direction 5321
 Hales Miss Future Lady 3252 Hales Bright Star 5162

PRODUCTION EPDs					CARCASS EPDs			\$ VALUES			
CED	BW	WW	YW	Milk	Marb	RE	Fat	\$W	\$F	\$G	\$B
+12	-1	+37	+70	+32	+0.73	+0.28	+0.039	+51.74	+14.52	+41.06	+82.11
INDIVIDUAL PERFORMANCE					ULTRASOUND DATA						
Birth Wt.	Adj. 205-day Wt.	Adj. 365-day Wt.			Adj. %IMF						
66	543	735			5.53						

Genomic enhanced EPDs. Due 6-9-19 TO MGR Treasure (18156972). PE from 2-11-19 to E073 (19020586). Confirmed bred to AI.

HALES FORTRESS LADY E191 [DDF]
BD: 03/31/17 COW: 19043191 TATTOO: E191
 Connealy Consensus KMK Alliance 6595 I87
K C F Bennett Fortress Blinda of Conanga 004
 17259012 S S Objective T510 0T26
 Thomas Patricia 9705 Thomas Patricia 71138
 Hales 216LTD Traveler 0019 SVF Gdar 216 LTD
Hales Miss 0019 Lady 3258 Hales Rainlady 4033
 14686920 V D A R New Trend 784
 Hales Queen Ann 917

PRODUCTION EPDs					CARCASS EPDs			\$ VALUES			
CED	BW	WW	YW	Milk	Marb	RE	Fat	\$W	\$F	\$G	\$B
+17	-1.9	+49	+82	+34	+0.38	+0.14	-0.002	+65.94	+40.19	+31.51	+61.68
INDIVIDUAL PERFORMANCE					ULTRASOUND DATA						
Birth Wt.	Adj. 205-day Wt.	Adj. 365-day Wt.			Adj. %IMF						
63	542	739			4.25						

Genomic enhanced EPDs. Due 5-30-19 TO MGR Treasure (18156972). PE from 2-11-19 to E073 (19020586). Confirmed bred to AI.

HALES CONSENSUS LADY E156
BD: 03/07/17 COW: 19020595 TATTOO: E156
 Connealy Consensus KMK Alliance 6595 I87
Connealy Consensus 7229 Blinda of Conanga 004
 16447771 Woodhill Admiral 77K
 Blue Lilly of Conanga 16 Blue Cash of Conanga 6020
 Mytty In Focus S A F Focus of E R
Hales In Focus Lady X183 Mytty Countess 906
 16956515 S S Objective T510 0T26
 Hales Miss Objective 5212 Hales Miss 616 Lady 3102

PRODUCTION EPDs					CARCASS EPDs			\$ VALUES			
CED	BW	WW	YW	Milk	Marb	RE	Fat	\$W	\$F	\$G	\$B
+13	-1.3	+40	+67	+19	+1.03	+0.04	+0.035	+47.29	+11.95	+48.47	+67.43
INDIVIDUAL PERFORMANCE					ULTRASOUND DATA						
Birth Wt.	Adj. 205-day Wt.	Adj. 365-day Wt.			Adj. %IMF						
64	569	830			8.97						

Due 4-15-19 TO G A R Sure Fire (17328461). PE from 2-11-19 to E073 (19020586). Confirmed bred to AI.

HALES CONFIDENCE LADY E034
BD: 01/12/17 COW: 19020572 TATTOO: E034
 Connealy Tobin Bon View New Design 208
Connealy Confidence 0100 Delia of Conanga 667
 16761479 Connealy Thunder
 Becka Gala of Conanga 8281 Becka Lee of Conanga 37
 Connealy Consensus 7229 Connealy Consensus
Hales Consensus Lady 5007 Blue Lilly of Conanga 16
 18224350 Mytty In Focus
 Hales In Focus Lady 9309 Hales Miss C Traveler 2074

PRODUCTION EPDs					CARCASS EPDs			\$ VALUES			
CED	BW	WW	YW	Milk	Marb	RE	Fat	\$W	\$F	\$G	\$B
+15	-1.2	+51	+91	+26	+0.36	+0.4	+0.047	+62.47	+42.65	+25.75	+95.66
INDIVIDUAL PERFORMANCE					ULTRASOUND DATA						
Birth Wt.	Adj. 205-day Wt.	Adj. 365-day Wt.			Adj. %IMF						
64	691	937			5.32						

Genomic enhanced EPDs. Due 9-10-19 TO G A R Sure Fire (17328461). PE from 2-11-19 to E073 (19020586). Confirmed bred to AI.

HALES POWER LADY E228
BD: 05/08/17 COW: 19041140 TATTOO: E228
 Rito 9M25 of Rita 5F56 Pred G A R Predestined
Hales 9M25 Power 4080 Rita 5F56 of 1198 FD
 17897309 Mytty In Focus
 Hales In Focus Lady 8255 Hales 4147 FD Lady 6294
 A A R Ten X 7008 S A Mytty In Focus
Hales Ten X Lady 4016 A A R Lady Kelton 5551
 17924621 C A Future Direction 5321
 Hales Miss Future Lady 3252 Hales Bright Star 5162

PRODUCTION EPDs					CARCASS EPDs			\$ VALUES			
CED	BW	WW	YW	Milk	Marb	RE	Fat	\$W	\$F	\$G	\$B
+10	+0	+38	+62	+31	+0.54	+0.19	+0.067	+52.85	+8.55	+32.94	+52.59
INDIVIDUAL PERFORMANCE					ULTRASOUND DATA						
Birth Wt.	Adj. 205-day Wt.	Adj. 365-day Wt.			Adj. %IMF						
61	602	796			5.43						

Genomic enhanced EPDs. Due 4-26-19 TO MGR Treasure (18156972). PE from 2-11-19 to E073 (19020586). Confirmed bred to AI.

HALES TRAVELER LADY E180
BD: 03/20/17 COW: 19051055 TATTOO: E180
 Sitz Upward 307R Connealy Onward
Hales 8018 Traveler 3175 Sitz Henrietta Pride 81M
 17811313 Hales Future Direction 6123
 Hales 6123 Direct Lady 8186 Hales Fortune Lady 7086
 TC Aberdeen 759 C R A Bextor 872 5205 608
Hales Aberdeen Lady 3030 TC Blackbird 4034
 17716288 Twin Valley Precision E161
 Hales Pesion Lady 6247 Hales Fly Lady 9067

PRODUCTION EPDs					CARCASS EPDs			\$ VALUES			
CED	BW	WW	YW	Milk	Marb	RE	Fat	\$W	\$F	\$G	\$B
+2	+3.3	+65	+104	+30	+0.38	+0.59	+0.052	+66.79	+55.65	+24.46	+140.3
INDIVIDUAL PERFORMANCE					ULTRASOUND DATA						
Birth Wt.	Adj. 205-day Wt.	Adj. 365-day Wt.			Adj. %IMF						
68	753	991			4.86						

Genomic enhanced EPDs. Due 10-16-19 TO G A R 100X (17774305). PE from 2-11-19 to E073 (19020586).

HALES 9M25 POWER LADY E205
BD: 04/10/17 COW: 19042382 TATTOO: E205
 Rito 9M25 of Rita 5F56 Pred G A R Predestined
Hales 9M25 Power 4080 Rita 5F56 of 1198 FD
 17897309 Mytty In Focus
 Hales In Focus Lady 8255 Hales 4147 FD Lady 6294
 Hales Upward Top Hand 1111 Sitz Upward 307R
Hales Y111 Lady 4144 Hales Miss Future Lady 3252
 17896542 Hales In Focus Lad 8199
 Hales Focus Lady 2153 Hales Miss Design 3047

PRODUCTION EPDs					CARCASS EPDs			\$ VALUES			
CED	BW	WW	YW	Milk	Marb	RE	Fat	\$W	\$F	\$G	\$B
+4	+0.2	+42	+74	+32	+0.58	+0.03	-0.002	+55.8	+22.23	+36.98	+84.82
INDIVIDUAL PERFORMANCE					ULTRASOUND DATA						
Birth Wt.	Adj. 205-day Wt.	Adj. 365-day Wt.			Adj. %IMF						
63	562	832			4.59						

Due 10-16-19 TO Ellingson Chaps 4095 (17932714). PE from 2-11-19 to E073 (19020586).

PRODUCTION EPDs					CARCASS EPDs			\$ VALUES			
CED	BW	WW	YW	Milk	Marb	RE	Fat	\$W	\$F	\$G	\$B
+6	+1.4	+51	+91	+24	+0.58	+0.54	+0.007	+46.44	+47.07	+34.80	+118.31

HALES ANGUS FARMS 24TH ANNUAL SALE *Two Year Old Bred Heifers*



HALES TOP HAND LADY E181 [DDF]

BD: 03/21/17 COW: 19044743 TATTOO: E181
 Sitz Upward 307R
Hales Upward Top Hand 1111
 17046678
 Hales Miss Future Lady 3252
 Riverbend Mile High 3718
Hales Mile High Lady 8150
 16143022
 Hales Miss C Traveler 3075
 Connealy Onward
 Sitz Henrietta Pride 81M
 C A Future Direction 5321
 Hales Bright Star 5162
 Bon View New Design 1407
 G A R Precision 1919
 California Traveler
 Hales Miss 036 Lady 1132

PRODUCTION EPDs					CARCASS EPDs			\$ VALUES			
CED	BW	WW	YW	Milk	Marb	RE	Fat	\$W	\$F	\$G	\$B
+12	-1	+36	+61	+27	+0.65	+0.59	-0.027	+40.76	+7.14	+45.67	+100.64
INDIVIDUAL PERFORMANCE				ULTRASOUND DATA							
Birth Wt.	Adj. 205-day Wt.	Adj. 365-day Wt.			Adj. %IMF						
60	598	764			5.87					9.7	

Genomic enhanced EPDs. Due 10-16-19 TO QHF WWA Black Onyx 5Q11 (18463791). PE from 2-11-19 to E073 (19020586).



HALES TOP HAND LADY E158

BD: 03/08/17 COW: 19049813 TATTOO: E158
 Sitz Upward 307R
Hales Upward Top Hand 1111
 17046678
 Hales Miss Future Lady 3252
 Mytty In Focus
Hales In Focus 7236
 16012667
 Hales Miss Objective 5215
 Connealy Onward
 Sitz Henrietta Pride 81M
 C A Future Direction 5321
 Hales Bright Star 5162
 S A F Focus of E R
 Mytty Countess 906
 S S Objective T510 0T26
 Hales Miss 0019 Lady 3160

PRODUCTION EPDs					CARCASS EPDs			\$ VALUES			
CED	BW	WW	YW	Milk	Marb	RE	Fat	\$W	\$F	\$G	\$B
+7	-0.6	+42	+71	+24	+0.34	+0.5	-0.007	+48.56	+8.39	+31.73	+65.91
INDIVIDUAL PERFORMANCE				ULTRASOUND DATA							
Birth Wt.	Adj. 205-day Wt.	Adj. 365-day Wt.			Adj. %IMF						
62	567	860			5.88					10.7	

Genomic enhanced EPDs. Due 10-16-19 TO Jindra Acclaim (17972810). PE from 2-11-19 to E073 (19020586).



HALES COMRADE LADY E106

BD: 02/09/17 COW: 19027512 TATTOO: E106
 Connealy Consensus 7229
Connealy Comrade 1385
 17031465
 Happy Gee of Conanga 919
 Connealy Forward
Hales Forward Lady X217
 16957389
 Hales Miss Bar Ext 0054
 Connealy Consensus
 Blue Lilly of Conanga 16
 G A R New Design 5050
 Hap Gina of Conanga 260 4965
 Connealy Onward
 Becky Lee of Conanga 74
 B A R Ext Traveler 205
 Hales Miss 784 Rainy 8080

PRODUCTION EPDs					CARCASS EPDs			\$ VALUES			
CED	BW	WW	YW	Milk	Marb	RE	Fat	\$W	\$F	\$G	\$B
+10	-1.6	+37	+65	+25	+0.52	+0.45	+0.006	+48.22	+17.03	+38.85	+76.97
INDIVIDUAL PERFORMANCE				ULTRASOUND DATA							
Birth Wt.	Adj. 205-day Wt.	Adj. 365-day Wt.			Adj. %IMF						
64	644	846			4.86					11.4	

Genomic enhanced EPDs. Due 10-16-19 TO MGR Treasure (18156972). PE from 2-11-19 to E073 (19020586).



HALES CHISUM LADY E079 [DDF]

BD: 01/31/17 COW: 19041134 TATTOO: E079
 S Chisum 6175
Hales Chisum 2016
 17310071
 Hales New Frontier Lady 4084
 G A R Predestined
Hales Predestined Lady 8284
 16309454
 Hales Miss Bando 3034
 S Alliance 3313
 S Gloria 464
 B/R New Frontier 095
 Hales Miss Design 0059
 B/R New Design 036
 G A R Ext 4206
 Tehama Bando 155
 Hales Princess 922

PRODUCTION EPDs					CARCASS EPDs			\$ VALUES			
CED	BW	WW	YW	Milk	Marb	RE	Fat	\$W	\$F	\$G	\$B
+0	+3.4	+54	+97	+23	+0.55	+0.28	+0.024	+46	+57.89	+32.6	+137.97
INDIVIDUAL PERFORMANCE				ULTRASOUND DATA							
Birth Wt.	Adj. 205-day Wt.	Adj. 365-day Wt.			Adj. %IMF						
70	621	850			6.21					9.5	

Genomic enhanced EPDs. Due 10-16-19 TO G A R 100X (17774305). PE from 2-11-19 to E073 (19020586).



PRODUCTION EPDs					CARCASS EPDs			\$ VALUES			
CED	BW	WW	YW	Milk	Marb	RE	Fat	\$W	\$F	\$G	\$B
+6	+1.4	+51	+91	+24	+0.58	+0.54	+0.007	+46.44	+47.07	+34.80	+118.31



Lot 121

HALES DISCOVERY LADY E353

FALL
*Yearling
Bred Heifers*
LOTS 121-139



Lot 122

HALES ABSOLUTE LADY E310

121 **HALES DISCOVERY LADY E353**

BD: 10/15/17 COW: 19310388 TATTOO: 7353
A A R Ten X 7008 S A Mytty In Focus
V A R Discovery 2240 A A R Lady Kelton 5551
17262835 Sitz Upward 307R
Deer Valley Rita 0308 G A R Objective 2345
Hales Objective Lad 7327 S S Objective T510 0T26
Hales 7327 Lady 4304 Hales Bando Queen 9065
18237974 Sitz Dash 10277
Hales Dash Lady 1022 Hales Miss Future Lady 3252

PRODUCTION EPDs					CARCASS EPDs			\$ VALUES			
CED	BW	WW	YW	Milk	Marb	RE	Fat	\$W	\$F	\$G	\$B
+13	-1.2	+56	+105	+30	+0.72	+0.63	-0.017	+61.21	+51.24	+46.32	+115.16
INDIVIDUAL PERFORMANCE					ULTRASOUND DATA						
Birth Wt.	Adj. 205-day Wt.	Adj. 365-day Wt.	Adj. %IMF				Adj. RE				
60	734	1044	5.87				11.8				

Genomic enhanced EPDs. Due 11-15-19 TO QHF WWA Black Onyx 5Q11 (18463791). PE from 2-11-19 to E302 (19308171).

122 **HALES ABSOLUTE LADY E310**

BD: 09/13/17 COW: 19308174 TATTOO: 7310
S A V Final Answer 0035 Sitz Traveler 8180
K C F Bennett Absolute S A V Emulous 8145
16430795 Wulffs Ext 6106
Thomas Miss Lucy 5152 Thomas Miss Lucy 3050
Connealy Consensus 7229 Connealy Consensus
Hales Consensus Lady 5124 Blue Lilly of Conanga 16
18407038 C R A Bextor 872 5205 608
Hales Bextor Lady 8277 Hales Miss Objective 5212

PRODUCTION EPDs					CARCASS EPDs			\$ VALUES			
CED	BW	WW	YW	Milk	Marb	RE	Fat	\$W	\$F	\$G	\$B
+7	+2	+61	+109	+20	+0.86	+0.62	+0.013	+57.26	+78	+46.5	+159.63
INDIVIDUAL PERFORMANCE					ULTRASOUND DATA						
Birth Wt.	Adj. 205-day Wt.	Adj. 365-day Wt.	Adj. %IMF				Adj. RE				
62	668	1034	7.52				11				

Genomic enhanced EPDs. Due 9-10-19 TO G A R Sure Fire (17328461). PE from 2-11-19 to E302 (19308171).

PRODUCTION EPDs					CARCASS EPDs			\$ VALUES			
CED	BW	WW	YW	Milk	Marb	RE	Fat	\$W	\$F	\$G	\$B
+6	+1.4	+51	+91	+24	+0.58	+0.54	+0.007	+46.44	+47.07	+34.80	+118.31

HALES ANGUS FARMS 24TH ANNUAL SALE *Fall Yearling Bred Heifers*



HALES COMBINATION ANNA E357



HALES BRONC LADY 7320

123 HALES BRONC LADY 7320

BD: 09/27/17 **COW:** 19310548 **TATTOO:** 7320
 EF Commando 1366 EF Complement 8088
Baldrige Bronc Riverbend Young Lucy W1470
 18229425 Styles Upgrade J59
 Baldrige Isabel Y69 Baldrige Isabel T935
 GAR-EGL Protege Rito 112 of 2536 Rito 616
Hales Protege lady 1250 L B 6807 Isabel 339
 17224441 Hales Big Ribeye 4102
 Hales Ribeye Lady 6243 Hales Miss Ext Lady 1022

PRODUCTION EPDs				CARCASS EPDs			\$ VALUES				
CED	BW	WW	YW	Milk	Marb	RE	Fat	\$W	\$F	\$G	\$B
+3	+1.8	+66	+121	+34	+0.53	+0.77	-0.001	+68.36	+92.71	+38.17	+155.79
INDIVIDUAL PERFORMANCE				ULTRASOUND DATA							
Birth Wt.	Adj. 205-day Wt.	Adj. 365-day Wt.	Adj. %IMF	Adj. RE							
62	694	1080	5.96	12.7							

Genomic enhanced EPDs. Due 9-10-19 TO G A R Sure Fire (17328461). PE from 2-11-19 to E302 (19308171).

124 HALES COMBINATION ANNA E357

BD: 10/18/17 **COW:** 19308185 **TATTOO:** 7357
 Connealy Consensus KMK Alliance 6595 I87
Connealy Combination 0188 Blinda of Conanga 004
 16748950 Connealy Tobin
 Black Cayra of Conanga 8127 Black Camma of Conanga 4184
 BR Midland Twin Valley Precision E161
Hales Midland 5248 BR Royal Lass 7036-19
 15344273 Hales Bando 4018
 Hales 4018 Bandy 7179 Hales Miss Rito 3026

PRODUCTION EPDs				CARCASS EPDs			\$ VALUES				
CED	BW	WW	YW	Milk	Marb	RE	Fat	\$W	\$F	\$G	\$B
+1	+0.5	+43	+83	+29	+0.32	+0.38	+0.023	+45.59	+48.42	+25.29	+116.61
INDIVIDUAL PERFORMANCE				ULTRASOUND DATA							
Birth Wt.	Adj. 205-day Wt.	Adj. 365-day Wt.	Adj. %IMF	Adj. RE							
68	620	982	6.01	11.4							

Genomic enhanced EPDs. Due 11-23-19 TO G A R Sure Fire (17328461). PE from 2-11-19 to E302 (19308171).

Breed Averages for Non-Parent Cows

PRODUCTION EPDs				CARCASS EPDs			\$ VALUES				
CED	BW	WW	YW	Milk	Marb	RE	Fat	\$W	\$F	\$G	\$B
+6	+1.4	+51	+91	+24	+0.58	+0.54	+0.007	+46.44	+47.07	+34.80	+118.31

HALES ANGUS FARMS 24TH ANNUAL SALE *Fall Yearling Bred Heifers*



HALES FINAL ANSWER LADY E342

BD: 10/11/17 COW: 19310422 TATTOO: 7342
 Sitz Traveler 8180 G D A R Traveler 71
S A V Final Answer 0035 II Sitz Everelda Entense 1137
 17320042 Bon View Bando 598
 S A V Emulous 8145 S A V Sky Emulous 2124
 Hales Protege Lad 1254 GAR-EGL Protege
Hales Y254 Lady 5465 Hales Objective Lady 8361
 18509059 Hales Future Direction 4147
 Hales Miss Future Lady 4142

PRODUCTION EPDs					CARCASS EPDs			\$ VALUES			
CED	BW	WW	YW	Milk	Marb	RE	Fat	\$W	\$F	\$G	\$B
+9	+2.4	+69	+117	+23	+0.34	+0.6	+0.023	+62.22	+87.59	+26.54	+145.15
INDIVIDUAL PERFORMANCE				ULTRASOUND DATA							
Birth Wt.	Adj. 205-day Wt.	Adj. 365-day Wt.	Adj. %IMF	Adj. RE							
62	757	1119	4.75	11.1							

Genomic enhanced EPDs. Due 9-10-19 TO G A R Sure Fire (17328461). PE from 2-11-19 to E302 (19308171).



HALES BRONC LADY E316

BD: 09/22/17 COW: 19310547 TATTOO: 7316
 EF Commando 1366 EF Complement 8088
Baldrige Bronc Riverbend Young Lucy W1470
 18229425 Baldrige Isabel Y69 Baldrige Isabel T935
 GAR-EGL Protege Rito 112 of 2536 Rito 616
Hales Protege Lady 1263 L B 6807 Isabel 339
 17224445 BR Midland
 Hales Midland 5248 Hales 4018 Bandy 7179

PRODUCTION EPDs					CARCASS EPDs			\$ VALUES			
CED	BW	WW	YW	Milk	Marb	RE	Fat	\$W	\$F	\$G	\$B
+13	-1.2	+57	+103	+35	+0.57	+0.74	+0.034	+70.18	+62.45	+37.43	+134.63
INDIVIDUAL PERFORMANCE				ULTRASOUND DATA							
Birth Wt.	Adj. 205-day Wt.	Adj. 365-day Wt.	Adj. %IMF	Adj. RE							
66	700	1031	4.8	13.2							

Genomic enhanced EPDs. Due 9-10-19 TO FINAL ANSWER II (17320042). PE from 2-11-19 to E302 (19308171).



HALES FORTRESS LADY 7330

BD: 10/02/17 COW: 19310430 TATTOO: 7330
 Connealy Consensus KMK Alliance 6595 I87
K C F Bennett Fortress Blinda of Conanga 004
 17259012 S S Objective T510 0T26
 Thomas Patricia 9705 Thomas Patricia 71138
 Sitz Upward 307R Connealy Onward
Hales Upward Lady 1260 Sitz Henrietta Pride 81M
 17224444 Hales Future Direction 4147
 Hales Miss Design Lady 3104

PRODUCTION EPDs					CARCASS EPDs			\$ VALUES			
CED	BW	WW	YW	Milk	Marb	RE	Fat	\$W	\$F	\$G	\$B
+8	+0.5	+49	+77	+29	+0.09	+0.51	-0.023	+61.63	+23.75	+18.77	+74.18
INDIVIDUAL PERFORMANCE				ULTRASOUND DATA							
Birth Wt.	Adj. 205-day Wt.	Adj. 365-day Wt.	Adj. %IMF	Adj. RE							
60	753	791	3.99	9.1							

Genomic enhanced EPDs. Due 11-14-19 TO G A R Sure Fire (17328461). PE from 2-11-19 to E302 (19308171).



HALES COMRADE LADY E348

BD: 10/14/17 COW: 19310360 TATTOO: 7348
 Connealy Consensus 7229 Connealy Consensus
Connealy Comrade 1385 Blue Lilly of Conanga 16
 17031465 G A R New Design 5050
 Happy Gee of Conanga 919 Hap Gina of Conanga 260 4965
 Connealy Combination 0188 Connealy Consensus
Hales Combination Lady 4319 Black Cayra of Conanga 8127
 18237979 GAR-EGL Protege
 Hales Protege Lady 1225 Hales Prime Time Lady 8363

PRODUCTION EPDs					CARCASS EPDs			\$ VALUES			
CED	BW	WW	YW	Milk	Marb	RE	Fat	\$W	\$F	\$G	\$B
+6	+1.2	+50	+97	+16	+0.43	+0.44	-0.007	+43.32	+63.63	+34.39	+107.08
INDIVIDUAL PERFORMANCE				ULTRASOUND DATA							
Birth Wt.	Adj. 205-day Wt.	Adj. 365-day Wt.	Adj. %IMF	Adj. RE							
65	656	978	5.25	10.8							

Genomic enhanced EPDs. Due 9-10-19 TO G A R Sure Fire (17328461). PE from 2-11-19 to E302 (19308171).



HALES PROTEGE LAD LADY 7376

BD: 11/24/17 COW: 19308194 TATTOO: 7376
 GAR-EGL Protege Rito 112 of 2536 Rito 616
Hales Protege Lad 1254 L B 6807 Isabel 339
 17224410 S S Objective T510 0T26
 Hales Objective Lady 8361 Hales Miss Design Lady 4128
 Hales Future Direction 4147 C A Future Direction 5321
Hales 4147 FD Lady 7316 Hales Miss Traveler 3014
 16040584 Hales 365 Stockman 9059
 Hales Miss 9059 Lady 3135 Hales Miss 234 Traveler 0133

PRODUCTION EPDs					CARCASS EPDs			\$ VALUES			
CED	BW	WW	YW	Milk	Marb	RE	Fat	\$W	\$F	\$G	\$B
+9	+1.2	+60	+103	+22	+0.67	+0.81	-0.031	+60.19	+54.55	+45.85	+144.1
INDIVIDUAL PERFORMANCE				ULTRASOUND DATA							
Birth Wt.	Adj. 205-day Wt.	Adj. 365-day Wt.	Adj. %IMF	Adj. RE							
68	629	995	5.35	11.2							

Genomic enhanced EPDs. Due 11-13-19 TO G A R Sure Fire (17328461). PE from 2-11-19 to E302 (19308171).



HALES FINAL ANSWER BANDY E363 [DDF]

BD: 10/23/17 COW: 19310429 TATTOO: 7363
 Sitz Traveler 8180 G D A R Traveler 71
S A V Final Answer 0035 II Sitz Everelda Entense 1137
 17320042 Bon View Bando 598
 S A V Emulous 8145 S A V Sky Emulous 2124
 Hales Future Direction 4147 C A Future Direction 5321
Hales 4147 Direct Lady 8165 Hales Miss Traveler 3014
 16143000 Baldrige Nebraska 901
 Hales Miss Nebraska 4067 Hales Miss Design Lady 2088

PRODUCTION EPDs					CARCASS EPDs			\$ VALUES			
CED	BW	WW	YW	Milk	Marb	RE	Fat	\$W	\$F	\$G	\$B
+13	-0.5	+39	+62	+28	+0.57	+0.2	+0.052	+49.02	+9.31	+34.41	+72.53
INDIVIDUAL PERFORMANCE				ULTRASOUND DATA							
Birth Wt.	Adj. 205-day Wt.	Adj. 365-day Wt.	Adj. %IMF	Adj. RE							
65	645	967	6.26	11.4							

Genomic enhanced EPDs. Due 10-25-19 TO QHF WWA Black Onyx 5Q11 (18463791). PE from 2-11-19 to E302 (19308171).



HALES LAD LADY 7390

BD: 12/07/17 COW: 19308202 TATTOO: 7390
 Hales Upward Top Hand 1111 Sitz Upward 307R
Hales Y111 Lad 5119 Hales Miss Future Lady 3252
 18275718 Sitz Upward 307R
 Hales Upward Lady 2003 Hales In Focus Lady 8050
 S S Objective T510 0T26 S S Traveler 6807 T510
Hales Objective Lady 7317 S S Miss Rita R011 7R8
 16053618 Hales Bando 4018
 Hales Bando Queen 9065 Hales New Trend 5065

PRODUCTION EPDs					CARCASS EPDs			\$ VALUES			
CED	BW	WW	YW	Milk	Marb	RE	Fat	\$W	\$F	\$G	\$B
+3	+2.3	+74	+128	+34	+0.17	+1.04	-0.043	+78.09	+88.54	+24.19	+153.01
INDIVIDUAL PERFORMANCE				ULTRASOUND DATA							
Birth Wt.	Adj. 205-day Wt.	Adj. 365-day Wt.	Adj. %IMF	Adj. RE							
63	766	1094	4.8	12.2							

Genomic enhanced EPDs. Due 11-15-19 TO G A R Sure Fire (17328461). PE from 2-11-19 to E302 (19308171).



HALES FINAL ANSWER BANDY E363 [DDF]

BD: 10/23/17 COW: 19310429 TATTOO: 7363
 Sitz Traveler 8180 G D A R Traveler 71
S A V Final Answer 0035 II Sitz Everelda Entense 1137
 17320042 Bon View Bando 598
 S A V Emulous 8145 S A V Sky Emulous 2124
 Hales Future Direction 4147 C A Future Direction 5321
Hales 4147 Direct Lady 8165 Hales Miss Traveler 3014
 16143000 Baldrige Nebraska 901
 Hales Miss Nebraska 4067 Hales Miss Design Lady 2088

PRODUCTION EPDs					CARCASS EPDs			\$ VALUES			
CED	BW	WW	YW	Milk	Marb	RE	Fat	\$W	\$F	\$G	\$B
+13	-0.5	+39	+62	+28	+0.57	+0.2	+0.051	+49.08	+9.72	+34.49	+73.02
INDIVIDUAL PERFORMANCE				ULTRASOUND DATA							
Birth Wt.	Adj. 205-day Wt.	Adj. 365-day Wt.	Adj. %IMF	Adj. RE							
65	645	967	6.26	11.4							

Due 9-10-19 TO G A R Sure Fire (17328461). PE from 2-11-19 to E302 (19308171).

PRODUCTION EPDs					CARCASS EPDs			\$ VALUES			
CED	BW	WW	YW	Milk	Marb	RE	Fat	\$W	\$F	\$G	\$B
+6	+1.4	+51	+91	+24	+0.58	+0.54	+0.007	+46.44	+47.07	+34.80	+118.31

HALES ANGUS FARMS 24TH ANNUAL SALE *Fall Yearling Bred Heifers*

133

HALES PROTEGE LADY 7372

BD: 11/15/17 COW: 19308191 TATTOO: 7372
 GAR-EGL Protege Rito 112 of 2536 Rito 616
Hales Protege Lad 1254 L B 6807 Isabel 339
 17224410 S S Objective T510 0T26
 Hales Objective Lady 8361 Hales Design Lady 4128
 N Bar Prime Time D806 Gardens Prime Time
Hales Prime Time Lady X120 N Bar Miss Emulous A404
 16908431 Mytty In Focus
 Hales In Focus Lady 8255 Hales 4147 FD Lady 6294

PRODUCTION EPDs					CARCASS EPDs			\$ VALUES			
CED	BW	WW	YW	Milk	Marb	RE	Fat	\$W	\$F	\$G	\$B
+16	-1.5	+49	+94	+32	+0.8	+0.26	+0.06	+60.91	+56.33	+37.75	+132.12
INDIVIDUAL PERFORMANCE				ULTRASOUND DATA							
Birth Wt.	Adj. 205-day Wt.	Adj. 365-day Wt.	Adj. %IMF		Adj. RE						
62	655	983	6		9.8						

Genomic enhanced EPDs. Due 11-14-19 TO G A R Sure Fire (17328461). PE from 2-11-19 to E302 (19308171).

134

HALES COMBINATION LADY 7387

BD: 12/06/17 COW: 19308200 TATTOO: 7387
 Connealy Combination 0188 Connealy Consensus
Hales Combination 5116 Black Cayra of Conanga 8127
 18404649 S C R A Bextor 872 5205 608
 Hales Bextor Lady 8277 Hales Miss Objective 5212
 S A V Final Answer 0035 Sitz Traveler 8180
Hales Final Answer Lady 5457 S A V Emulous 8145
 18509498 Sitz Upward 307R
 Hales Upward Lady 1260 Hales 4147 FD Lady 7313

PRODUCTION EPDs					CARCASS EPDs			\$ VALUES			
CED	BW	WW	YW	Milk	Marb	RE	Fat	\$W	\$F	\$G	\$B
+0	+3.9	+72	+121	+26	+0.6	+0.85	-0.021	+63.19	+83.7	+41.18	+172.32
INDIVIDUAL PERFORMANCE				ULTRASOUND DATA							
Birth Wt.	Adj. 205-day Wt.	Adj. 365-day Wt.	Adj. %IMF		Adj. RE						
75	612	943	5.75		8.4						

Genomic enhanced EPDs. Due 11-15-19 TO G A R 100X (17774305). PE from 2-11-19 to E302 (19308171).

135

HALES ABSOLUTE LADY E388

BD: 12/06/17 COW: 19312002 TATTOO: 7388
 S A V Final Answer 0035 Sitz Traveler 8180
K C F Bennett Absolute S A V Emulous 8145
 16430795 Wulffs Ext 6106
 Thomas Miss Lucy 5152 Thomas Miss Lucy 3050
 S S Objective T510 0T26 S S Traveler 6807 T510
Hales In Focus Lady 9292 S S Miss Rita R011 7R8
 16644589 Hales Future Direction 4147
 Hales Miss Future Lady 3252

PRODUCTION EPDs					CARCASS EPDs			\$ VALUES			
CED	BW	WW	YW	Milk	Marb	RE	Fat	\$W	\$F	\$G	\$B
+9	+0.1	+63	+107	+24	+0.76	+0.7	+0.004	+64.17	+68.46	+45.59	+148.05
INDIVIDUAL PERFORMANCE				ULTRASOUND DATA							
Birth Wt.	Adj. 205-day Wt.	Adj. 365-day Wt.	Adj. %IMF		Adj. RE						
62	634	960	5.58		9.2						

Genomic enhanced EPDs. Due 10-25-19 TO Jindra Acclaim (17972810). PE from 2-11-19 to E302 (19308171).

136

HALES LAD LADY 7383

BD: 12/02/17 COW: 19308197 TATTOO: 7383
 Hales Upward Top Hand 1111 Sitz Upward 307R
Hales Y111 Lad 5119 Hales Miss Future Lady 3252
 18275718 Sitz Upward 307R
 Hales Upward Lady 2003 Hales In Focus Lady 8050
 Sitz Dash 10277
Hales Dash Lady 1026 Sitz Upward 307R
 17012887 Sitz Everelda Entense 2665
 Hales Bextor Lady 8052 C R A Bextor 872 5205 608
 Hales Miss In Focus 6020

PRODUCTION EPDs					CARCASS EPDs			\$ VALUES			
CED	BW	WW	YW	Milk	Marb	RE	Fat	\$W	\$F	\$G	\$B
+7	+1.8	+62	+105	+29	+0.29	+0.93	-0.009	+65.11	+55.42	+29.56	+128.46
INDIVIDUAL PERFORMANCE				ULTRASOUND DATA							
Birth Wt.	Adj. 205-day Wt.	Adj. 365-day Wt.	Adj. %IMF		Adj. RE						
65	697	932	4.79		10.2						

Due 11-15-19 TO G A R Sure Fire (17328461). PE from 2-11-19 to E302 (19308171).

137

HALES LAD MISS 7386

BD: 12/06/17 COW: 19308199 TATTOO: 7386
 Hales Upward Top Hand 1111 Sitz Upward 307R
Hales Y111 Lad 5119 Hales Miss Future Lady 3252
 18275718 Sitz Upward 307R
 Hales Upward Lady 2003 Hales In Focus Lady 8050
 BR Midland Twin Valley Precision E161
Hales Miss Midland 5219 BR Royal Lass 7036-19
 15344261 Royal Rito L 2
 Hales Miss Royal Lady 1225 Hales Rito Rito Lady 06

PRODUCTION EPDs					CARCASS EPDs			\$ VALUES			
CED	BW	WW	YW	Milk	Marb	RE	Fat	\$W	\$F	\$G	\$B
+4	+2	+46	+77	+29	+0.27	+0.8	-0.014	+48.47	+30.91	+29.51	+109.81
INDIVIDUAL PERFORMANCE				ULTRASOUND DATA							
Birth Wt.	Adj. 205-day Wt.	Adj. 365-day Wt.	Adj. %IMF		Adj. RE						
56	584	816	4.12		9.9						

Genomic enhanced EPDs. Due 10-25-19 TO Connealy Comrade 1385 (17031465). PE from 2-11-19 to E302 (19308171).

138

HALES LAD LADY 7397

BD: 12/10/17 COW: 19309404 TATTOO: 7397
 Hales Upward Top Hand 1111 Sitz Upward 307R
Hales Y111 Lad 5119 Hales Miss Future Lady 3252
 18275718 Sitz Upward 307R
 Hales Upward Lady 2003 Hales In Focus Lady 8050
 Riverbend Mile High 3718 Bon View New Design 1407
Hales Mile High Lady 8074 G A R Precision 1919
 16111021 S A F Connection
 Hales Miss Connection 4146 Hales Miss 878 Design 2113

PRODUCTION EPDs					CARCASS EPDs			\$ VALUES			
CED	BW	WW	YW	Milk	Marb	RE	Fat	\$W	\$F	\$G	\$B
+4	+2.8	+53	+90	+23	+0.64	+0.53	+0.004	+47.88	+39.81	+41	+125.12
INDIVIDUAL PERFORMANCE				ULTRASOUND DATA							
Birth Wt.	Adj. 205-day Wt.	Adj. 365-day Wt.	Adj. %IMF		Adj. RE						
55	607	879	4.67		9.9						

Genomic enhanced EPDs. Due 10-25-19 TO G A R 100X (17774305). PE from 2-11-19 to E302 (19308171).

139

HALES COMRADE LADY E391

BD: 12/08/17 COW: 19310370 TATTOO: 7391
 Connealy Consensus 7229 Connealy Consensus
Connealy Comrade 1385 Blue Lilly of Conanga 16
 17031465 G A R New Design 5050
 Happy Gee of Conanga 919 Hap Gina of Conanga 260 4965
 Hales Big Ribeye 4102 C A Future Direction 5321
Hales Ribeye Lady 8123 Hales Fly Lady 9067
 16108309 Hales 216LTD Traveler 0019
 Hales 0019 Traveler Lady 136 Hales Miss Traveler 8088

PRODUCTION EPDs					CARCASS EPDs			\$ VALUES			
CED	BW	WW	YW	Milk	Marb	RE	Fat	\$W	\$F	\$G	\$B
+10	-0.1	+40	+84	+26	+0.63	+0.61	+0	+37.53	+51.32	+43.59	+108.86
INDIVIDUAL PERFORMANCE				ULTRASOUND DATA							
Birth Wt.	Adj. 205-day Wt.	Adj. 365-day Wt.	Adj. %IMF		Adj. RE						
61	541	893	5.96		10.9						

Due 10-25-19 TO MGR Treasure (18156972). PE from 2-11-19 to E302 (19308171).



PRODUCTION EPDs					CARCASS EPDs			\$ VALUES			
CED	BW	WW	YW	Milk	Marb	RE	Fat	\$W	\$F	\$G	\$B
+6	+1.4	+51	+91	+24	+0.58	+0.54	+0.007	+46.44	+47.07	+34.80	+118.31



Lot 140

HALES FORTRESS LADY 8014

SPRING
Yearling
Open Heifers
LOTS 140-159



Lot 141

HALES ABSOLUTE LADY 8009

140

HALES FORTRESS LADY 8014

BD: 01/08/18 COW: 19341046 TATTOO: 8014
 Connealy Consensus KMK Alliance 6595 I87
K C F Bennett Fortress 17259012 Blinda of Conanga 004
 S S Objective T510 OT26
 Thomas Patricia 71138
 Thomas Patricia 9705 N Bar Prime Time D806
 Sinclair Net Present Value Ideal 4465 of 6807 4286
Hales In Focus Lady 9216 16644559 S S Objective T510 OT26
 Hales Future Lady 3219
 Hales Objective Lady 7254

PRODUCTION EPDs					CARCASS EPDs			\$ VALUES			
CED	BW	WW	YW	Milk	Marb	RE	Fat	\$W	\$F	\$G	\$B
+7	+2.6	+80	+139	+22	+0.78	+0.67	-0.036	+71.96	+111.96	+47.74	+166.73
INDIVIDUAL PERFORMANCE				ULTRASOUND DATA							
Birth Wt.	Adj. 205-day Wt.	Adj. 365-day Wt.	Adj. %IMF	Adj. RE							
70	669	967	5.77	13							

Genomic enhanced EPDs. Sells open.

141

HALES ABSOLUTE LADY 8009

BD: 01/03/18 COW: 19342411 TATTOO: 8009
 S A V Final Answer 0035 Sitz Traveler 8180
K C F Bennett Absolute 16430795 S A V Emulous 8145
 Wulffs Ext 6106
 Thomas Miss Lucy 5152 Thomas Miss Lucy 3050
 Hales Objective Lad 8031 S S Objective T510 OT26
Hales 8031 Lady 4059 17947449 Hales Miss In Focus 6022
 C R A Bextor 872 5205 608
 Hales Bexter Lady 8052 Hales Miss In Focus 6020

PRODUCTION EPDs					CARCASS EPDs			\$ VALUES			
CED	BW	WW	YW	Milk	Marb	RE	Fat	\$W	\$F	\$G	\$B
+8	+1.8	+69	+119	+26	+1.03	+0.5	+0.028	+70.66	+94.93	+47.68	+172.15
INDIVIDUAL PERFORMANCE				ULTRASOUND DATA							
Birth Wt.	Adj. 205-day Wt.	Adj. 365-day Wt.	Adj. %IMF	Adj. RE							
68	672	914	4.71	10.2							

Genomic enhanced EPDs. Sells open.

PRODUCTION EPDs					CARCASS EPDs			\$ VALUES			
CED	BW	WW	YW	Milk	Marb	RE	Fat	\$W	\$F	\$G	\$B
+6	+1.4	+51	+91	+24	+0.58	+0.54	+0.007	+46.44	+47.07	+34.80	+118.31



HALES FORTRESS LADY 8036

142 **HALES BRONC LADY 8001**
 BD: 01/01/18 COW: 19341251 TATTOO: 8001
 EF Commando 1366 EF Complement 8088
Baldrige Bronc Riverbend Young Lucy W1470
 18229425 Styles Upgrade J59
 Baldrige Isabel Y69 Baldrige Isabel T935
 S A V Final Answer 0035 Sitz Traveler 8180
Hales Final Answer Lady 4335 S A V Emulous 8145
 18237985 Mytty In Focus
 Hales In focus Lady 9223 Hales 4147 FD Lady 7313

PRODUCTION EPDs					CARCASS EPDs			\$ VALUES			
CED	BW	WW	YW	Milk	Marb	RE	Fat	\$W	\$F	\$G	\$B
+16	-2	+64	+103	+40	+0.53	+0.59	+0.039	+90.06	+57.57	+35.76	+110.24
INDIVIDUAL PERFORMANCE					ULTRASOUND DATA						
Birth Wt.	Adj. 205-day Wt.	Adj. 365-day Wt.	Adj. %IMF				Adj. RE				
54	654	904	4.19				11.6				

Genomic enhanced EPDs. Sells open.

143 **HALES FORTRESS LADY 8036**
 BD: 01/18/18 COW: 19341056 TATTOO: 8036
 Connealy Consensus KMK Alliance 6595 187
K C F Bennett Fortress Blinda of Conanga 004
 17259012 S S Objective T510 0T26
 Thomas Patricia 9705 Thomas Patricia 71138
 Hales Nebraska 5032 Baldrige Nebraska 901
Hales 5032 Nebraska Lady 205 Hales Miss Design Lady 3112
 15768092 G A R Retail Product
 Hales Miss Retail Lady 5121 Hales Miss 234 Traveler 0084

PRODUCTION EPDs					CARCASS EPDs			\$ VALUES			
CED	BW	WW	YW	Milk	Marb	RE	Fat	\$W	\$F	\$G	\$B
+8	+1.7	+74	+131	+25	+0.53	+0.58	-0.035	+78	+109.58	+40.16	+146.58
INDIVIDUAL PERFORMANCE					ULTRASOUND DATA						
Birth Wt.	Adj. 205-day Wt.	Adj. 365-day Wt.	Adj. %IMF				Adj. RE				
53	662	881	5.08				9.1				

Genomic enhanced EPDs. Sells open.

144 **HALES BUTKUS LADY 8004**
 BD: 01/02/18 COW: 19340869 TATTOO: 8004
 S A V Final Answer 0035 Sitz Traveler 8180
SandPoint Butkus X797 S A V Emulous 8145
 16829413 G A R Grid Maker
 G A R Grid Maker 4603 G A R New Design 741
 Hales Future Direction 4147 C A Future Direction 3221
Hales 4147FD Lady 7315 Hales Miss Traveler 3014
 16040583 Bon View New Design 878
 Hales Miss Queen Lady 1208

PRODUCTION EPDs					CARCASS EPDs			\$ VALUES			
CED	BW	WW	YW	Milk	Marb	RE	Fat	\$W	\$F	\$G	\$B
+12	-1.3	+52	+84	+23	+0.56	+0.24	+0.021	+59.96	+47.41	+35.88	+108.42
INDIVIDUAL PERFORMANCE					ULTRASOUND DATA						
Birth Wt.	Adj. 205-day Wt.	Adj. 365-day Wt.	Adj. %IMF				Adj. RE				
58	740	841	5.14				10.5				

Genomic enhanced EPDs. Sells open.

145 **HALES COMBINATION LADY 8068**
 BD: 02/01/18 COW: 19340854 TATTOO: 8068
 Connealy Consensus KMK Alliance 6595 187
Connealy Combination 0188 Blinda of Conanga 004
 16748950 Connealy Tobin
 Black Cayra of Conanga 8127 Black Gamma of Conanga 4184
 S A V Pioneer 7301 S A V Final Answer 0035
Hales Pioneer Lady 4150 S A V Blackbird 5297
 17925554 B A R Ext Traveler 205
 Hales Bar Ext Lady 8119 Hales Miss 234D Lady 4138

PRODUCTION EPDs					CARCASS EPDs			\$ VALUES			
CED	BW	WW	YW	Milk	Marb	RE	Fat	\$W	\$F	\$G	\$B
+3	+0.8	+59	+91	+25	+0.42	+0.49	+0.034	+70.8	+40.46	+30.79	+100.91
INDIVIDUAL PERFORMANCE					ULTRASOUND DATA						
Birth Wt.	Adj. 205-day Wt.	Adj. 365-day Wt.	Adj. %IMF				Adj. RE				
70	730	898	6.51				10.8				

Genomic enhanced EPDs. Sells open.

PRODUCTION EPDs					CARCASS EPDs			\$ VALUES			
CED	BW	WW	YW	Milk	Marb	RE	Fat	\$W	\$F	\$G	\$B
+6	+1.4	+51	+91	+24	+0.58	+0.54	+0.007	+46.44	+47.07	+34.80	+118.31

HALES ANGUS FARMS 24TH ANNUAL SALE *Spring Yearling Open Heifers*



HALES ABSOLUTE LADY 8008

BD: 01/03/18 **COW:** 19342442 **TATTOO:** 8008
 S A V Final Answer 0035 Sitz Traveler 8180
K C F Bennett Absolute S A V Emulous 8145
 16430795 Wulffs Ext 6106
 Thomas Miss Lucy 5152 Thomas Miss Lucy 3050
 Hales In Focus Lad 8018 Mytty In Focus
Hales Focus Lady 1114 Hales Miss 0019 Lady 6141
 17035729 S S Objective T510 0T26
 Hales Objective Lady 8358 Hales Miss Lady 2171

PRODUCTION EPDs					CARCASS EPDs			\$ VALUES			
CED	BW	WW	YW	Milk	Marb	RE	Fat	\$W	\$F	\$G	\$B
+12	+0	+47	+81	+26	+0.92	+0.76	-0.003	+50.12	+32.24	+52.8	+116.01
INDIVIDUAL PERFORMANCE				ULTRASOUND DATA							
Birth Wt.	Adj. 205-day Wt.	Adj. 365-day Wt.			Adj. %IMF						
60	647	841			5.7						

Genomic enhanced EPDs. Sells open.



HALES COMBINATION LADY 8029

BD: 01/15/18 **COW:** 19338168 **TATTOO:** 8029
 Connealy Combination 0188 Connealy Consensus
Hales Combination 5116 Black Cayra of Conanga 8127
 18404649 C R A Bextor 872 5205 608
 Hales Bextor Lady 8277 Hales Miss Objective 5212
 SandPoint Butkus X797 S A V Final Answer 0035
Hales Lady D087 G A R Grid Maker 4603
 18685926 Sitz Upward 307R
 Hles Upward Lady 3003 Hales Miss Future Lady 3252

PRODUCTION EPDs					CARCASS EPDs			\$ VALUES			
CED	BW	WW	YW	Milk	Marb	RE	Fat	\$W	\$F	\$G	\$B
+8	+1.3	+45	+71	+22	+0.32	+0.41	+0.031	+49.47	+30.22	+25.98	+100.86
INDIVIDUAL PERFORMANCE				ULTRASOUND DATA							
Birth Wt.	Adj. 205-day Wt.	Adj. 365-day Wt.			Adj. %IMF						
58	705	851			5.69						

Genomic enhanced EPDs. Sells open.



HALES CHISUM LADY 8032 [DDP]

BD: 01/18/18 **COW:** 19361956 **TATTOO:** 8032
 S Chisum 6175 S Alliance 3313
Hales Chisum 2016 S Gloria 464
 17310071 B/R New Frontier 095
 Hales New Frontier Lady 4084 Hales Miss Design 0059
 R/M Ironstone 4047 C A Future Direction 5321
Hales Ironstone Lady 1306 B/R Ruby of Tiffany 5144
 17272246 Connealy Lead On
 Hales Miss Lead On 4214 Hales Miss Bandy 9202

PRODUCTION EPDs					CARCASS EPDs			\$ VALUES			
CED	BW	WW	YW	Milk	Marb	RE	Fat	\$W	\$F	\$G	\$B
+3	+2.1	+53	+86	+26	+0.4	+0.42	+0.039	+50.32	+38.27	+27.58	+114.11
INDIVIDUAL PERFORMANCE				ULTRASOUND DATA							
Birth Wt.	Adj. 205-day Wt.	Adj. 365-day Wt.			Adj. %IMF						
66	668	786			4.26						

Genomic enhanced EPDs. Sells open.



HALES FINAL ANSWER LADY 8062

BD: 01/29/18 **COW:** 19341034 **TATTOO:** 8062
 Sitz Traveler 8180 G D A R Traveler 71
S A V Final Answer 0035 II Sitz Everelda Entense 1137
 17320042 Bon View Bando 598
 S A V Emulous 8145 S A V Sky Emulous 2124
 Connealy Consensus 7229 Connealy Consensus
Hales Lady D151 Blue Lilly of Conanga 16
 18687415 Mytty In Focus
 Hales In Focus Lady 8255 Hales 4147 FD Lady 6294

PRODUCTION EPDs					CARCASS EPDs			\$ VALUES			
CED	BW	WW	YW	Milk	Marb	RE	Fat	\$W	\$F	\$G	\$B
+10	+1.3	+67	+116	+18	+0.19	+0.83	-0.003	+62.25	+82.88	+22.6	+141.96
INDIVIDUAL PERFORMANCE				ULTRASOUND DATA							
Birth Wt.	Adj. 205-day Wt.	Adj. 365-day Wt.			Adj. %IMF						
63	688	886			4.94						

Genomic enhanced EPDs. Sells open.



HALES ABSOLUTE LADY 8060 [DDF]

BD: 01/29/18 **COW:** 19342426 **TATTOO:** 8060
 S A V Final Answer 0035 Sitz Traveler 8180
K C F Bennett Absolute S A V Emulous 8145
 16430795 Wulffs Ext 6106
 Thomas Miss Lucy 5152 Thomas Miss Lucy 3050
 Hales In Focus Lad 8199 Mytty In Focus
Hales Focus Lady 2157 Hales Bando Queen 9065
 17335679 B/R New Design 323-9150
 Hales Miss New Trend 5211 Hales Miss New Design 2235

PRODUCTION EPDs					CARCASS EPDs			\$ VALUES			
CED	BW	WW	YW	Milk	Marb	RE	Fat	\$W	\$F	\$G	\$B
+15	-2.3	+31	+61	+32	+0.64	+0.39	-0.01	+43.54	+16.39	+42.98	+97.94
INDIVIDUAL PERFORMANCE				ULTRASOUND DATA							
Birth Wt.	Adj. 205-day Wt.	Adj. 365-day Wt.			Adj. %IMF						
66	667	795			6.21						

Genomic enhanced EPDs. Sells open.



HALES CHISUM LADY 8082 [DDF]

BD: 02/10/18 **COW:** 19338172 **TATTOO:** 8082
 S Chisum 6175 S Alliance 3313
Hales Chisum 2016 S Gloria 464
 17310071 B/R New Frontier 095
 Hales New Frontier Lady 4084 Hales Miss Design 0059
 GAR-EGL Protege Rito 112 of 2536 Rito 616
Hales Protege Lady 1238 L B 6807 Isabel 339
 17224435 S S Objective T510 0T26
 Hales Miss Objective 5212 Hales Miss 616 Lady 3102

PRODUCTION EPDs					CARCASS EPDs			\$ VALUES			
CED	BW	WW	YW	Milk	Marb	RE	Fat	\$W	\$F	\$G	\$B
+8	+1.9	+56	+97	+20	+0.41	+0.49	+0.015	+49.75	+58.29	+31.23	+119.14
INDIVIDUAL PERFORMANCE				ULTRASOUND DATA							
Birth Wt.	Adj. 205-day Wt.	Adj. 365-day Wt.			Adj. %IMF						
68	576	802			5.04						

Genomic enhanced EPDs. Sells open.



HALES CHISUM LADY 8067 [DDP]

BD: 01/31/18 **COW:** 19361959 **TATTOO:** 8067
 S Chisum 6175 S Alliance 3313
Hales Chisum 2016 S Gloria 464
 17310071 B/R New Frontier 095
 Hales New Frontier Lady 4084 Hales Miss Design 0059
 Hales Objective Lad 8031 S S Objective T510 0T26
Hales 8031 Lady 2222 Hales Miss In Focus 6022
 17556509 Hales Traveler 5216
 Hales 5216 Traveler Lady 99 Hales Future Lady 3219

PRODUCTION EPDs					CARCASS EPDs			\$ VALUES			
CED	BW	WW	YW	Milk	Marb	RE	Fat	\$W	\$F	\$G	\$B
+5	+3.3	+53	+86	+23	+0.57	+0.59	+0.004	+43.49	+37.25	+38.99	+126.59
INDIVIDUAL PERFORMANCE				ULTRASOUND DATA							
Birth Wt.	Adj. 205-day Wt.	Adj. 365-day Wt.			Adj. %IMF						
77	623	756			4.91						

Genomic enhanced EPDs. Sells open.



HALES FORTRESS LADY 8092

BD: 02/14/18 **COW:** 19340960 **TATTOO:** 8092
 Connealy Consensus KMK Alliance 6595 187
K C F Bennett Fortress Blinda of Conanga 004
 17259012 S S Objective T510 0T26
 Thomas Patricia 9705 Thomas Patricia 71138
 S A V Final Answer 0035 Sitz Traveler 8180
Hales Lady D071 S A V Emulous 8145
 18740253 Hales Future Direction 4147
 Hales 4147 Direct Lady 8203 Hales Miss New Design 2244

PRODUCTION EPDs					CARCASS EPDs			\$ VALUES			
CED	BW	WW	YW	Milk	Marb	RE	Fat	\$W	\$F	\$G	\$B
+17	-1.8	+58	+107	+31	+0.67	+0.43	+0.01	+68.24	+71.92	+42.7	+104.92
INDIVIDUAL PERFORMANCE				ULTRASOUND DATA							
Birth Wt.	Adj. 205-day Wt.	Adj. 365-day Wt.			Adj. %IMF						
65	679	852			4.78						

Genomic enhanced EPDs. Sells open.

PRODUCTION EPDs					CARCASS EPDs			\$ VALUES			
CED	BW	WW	YW	Milk	Marb	RE	Fat	\$W	\$F	\$G	\$B
+6	+1.4	+51	+91	+24	+0.58	+0.54	+0.007	+46.44	+47.07	+34.80	+118.31

HALES ANGUS FARMS 24TH ANNUAL SALE *Spring Yearling Open Heifers*

154 HALES CHISUM LADY 8053 [DDF]

BD: 01/02/18 COW: 19361958 TATTOO: 8053
 S Chisum 6175 S Alliance 3313
 S Gloria 464
 B/R New Frontier 095
 Hales Miss Design 0059
 Hales New Frontier Lady 4084
 G A R Predestined
 B/R New Design 036
 G A R Ext 4206
 Hales Bando 4018
 Hales New Trend 5065

PRODUCTION EPDs					CARCASS EPDs			\$ VALUES			
CED	BW	WW	YW	Milk	Marb	RE	Fat	\$W	\$F	\$G	\$B
+6	-0.1	+43	+75	+22	+0.5	+0.37	+0.024	+40.81	+26.57	+33.47	+110.66
INDIVIDUAL PERFORMANCE				ULTRASOUND DATA							
Birth Wt.	Adj. 205-day Wt.	Adj. 365-day Wt.	Adj. %IMF		Adj. RE						
55	590	763	4.89		8.8						

Genomic enhanced EPDs. Sells open.

156 HALES FORTRESS LADY 8035

BD: 01/18/18 COW: 19341055 TATTOO: 8035
 Connealy Consensus KMK Alliance 6595 I87
 Blinda of Conanga 004
 S S Objective T510 OT26
 Thomas Patricia 71138
 Hales Nebraska 5032
 Baldridge Nebraska 901
 Hales Miss Design Lady 3112
 G A R Retail Product
 Hales Miss Retail Lady 5121
 Hales Miss 234 Traveler 0084

PRODUCTION EPDs					CARCASS EPDs			\$ VALUES			
CED	BW	WW	YW	Milk	Marb	RE	Fat	\$W	\$F	\$G	\$B
+10	+0	+66	+111	+32	+0.53	+0.62	-0.029	+79.78	+78.73	+41.13	+123.99
INDIVIDUAL PERFORMANCE				ULTRASOUND DATA							
Birth Wt.	Adj. 205-day Wt.	Adj. 365-day Wt.	Adj. %IMF		Adj. RE						
59	709	864	5.68		10.7						

Genomic enhanced EPDs. Sells open.

157 HALES FLAT TOP LADY 8045

BD: 01/23/18 COW: 19341198 TATTOO: 8045
 Connealy Black Granite Connealy Consensus 7229
 Eura Elga of Conanga 9109
 C R A Bextor 872 5205 608
 SandPoint Lady 7869
 Werner Flat Top 4136
 Werner Lady 0304
 S A V Final Answer 0035
 Sitz Traveler 8180
 Hales Final Answer Lady 5029
 S A V Emulous 8145
 Hales Upward Top Hand 1111
 Hales In Focus Lady x168
 Hales Top Hand Lady 3039

PRODUCTION EPDs					CARCASS EPDs			\$ VALUES			
CED	BW	WW	YW	Milk	Marb	RE	Fat	\$W	\$F	\$G	\$B
+10	-0.2	+56	+103	+24	+0.45	+0.47	-0.013	+57.16	+71.95	+34.87	+127.49
INDIVIDUAL PERFORMANCE				ULTRASOUND DATA							
Birth Wt.	Adj. 205-day Wt.	Adj. 365-day Wt.	Adj. %IMF		Adj. RE						
61	612	770	4.63		8.7						

Genomic enhanced EPDs. Sells open.

158 HALES TEN SPEED LADY 8120

BD: 03/08/18 COW: 19357826 TATTOO: 8120
 A A R Ten X 7008 S A Mytty In Focus
 A A R Lady Kelton 5551
 S A V Bismarck 5682
 S A V Madame Pride 9100
 S A V Ten Speed 3022
 S A V Madame Pride 1134
 Connealy Consensus 7229
 Connealy Consensus
 Blue Lilly of Conanga 16
 Rockn D Ambush 1531
 Hales Miss Ambush Lady 3205
 Hales Miss 784 Rainy 8080

PRODUCTION EPDs					CARCASS EPDs			\$ VALUES			
CED	BW	WW	YW	Milk	Marb	RE	Fat	\$W	\$F	\$G	\$B
+7	+0.8	+58	+107	+19	+0.83	+0.55	-0.013	+47.07	+80.08	+48.55	+142.47
INDIVIDUAL PERFORMANCE				ULTRASOUND DATA							
Birth Wt.	Adj. 205-day Wt.	Adj. 365-day Wt.	Adj. %IMF		Adj. RE						
61	599										

Sells open.

155 HALES ABSOLUTE LADY 8033 [DDF]

BD: 01/18/18 COW: 19342395 TATTOO: 8033
 S A V Final Answer 0035 Sitz Traveler 8180
 S A V Emulous 8145
 Wulffs Ext 6106
 K C F Bennett Absolute Thomas Miss Lucy 5152
 Connealy Consensus 7229
 Connealy Consensus
 Blue Lilly of Conanga 16
 S S Objective T510 OT26
 Hales Miss New Trend 5211
 Hales Objective Lady 9240

PRODUCTION EPDs					CARCASS EPDs			\$ VALUES			
CED	BW	WW	YW	Milk	Marb	RE	Fat	\$W	\$F	\$G	\$B
+12	-0.9	+48	+71	+16	+0.61	+0.72	-0.014	+46.19	+21.88	+45.21	+94.2
INDIVIDUAL PERFORMANCE				ULTRASOUND DATA							
Birth Wt.	Adj. 205-day Wt.	Adj. 365-day Wt.	Adj. %IMF		Adj. RE						
52	582	755	4.88		10.6						

Genomic enhanced EPDs. Sells open.



WERNER FLAT TOP 4136 REFERENCE SIRE



S A V TEN SPEED 3022 REFERENCE SIRE

159 HALES TOP HAND LADY 8141

BD: 03/20/18 COW: 19356566 TATTOO: 8141
 Sitz Upward 307R Connealy Onward
 Sitz Henrietta Pride 81M
 C A Future Direction 5321
 Hales Bright Star 5162
 Hales Upward Top Hand 1111
 Hales Miss Future Lady 3252
 Sitz Dash 10277
 Sitz Upward 307R
 Sitz Everelda Entense 2665
 C A Future Direction 5321
 Hales Bright Star 5162
 Hales Dash Lady 123
 Hales Miss Future Lady 3252

PRODUCTION EPDs					CARCASS EPDs			\$ VALUES			
CED	BW	WW	YW	Milk	Marb	RE	Fat	\$W	\$F	\$G	\$B
+8	-0.2	+65	+95	+27	+0.55	+0.75	+0.007	+72.53	+41.06	+40.18	+112.71
INDIVIDUAL PERFORMANCE				ULTRASOUND DATA							
Birth Wt.	Adj. 205-day Wt.	Adj. 365-day Wt.	Adj. %IMF		Adj. RE						
63	667										

Sells open.

PRODUCTION EPDs					CARCASS EPDs			\$ VALUES			
CED	BW	WW	YW	Milk	Marb	RE	Fat	\$W	\$F	\$G	\$B
+6	+1.4	+51	+91	+24	+0.58	+0.54	+0.007	+46.44	+47.07	+34.80	+118.31

REFERENCE Sires



HALES PROTEGE LAD 1254

BD: 10/17/2011 BULL: 17224410 TATTOO: Y254

Rito 112 of 2536 Rito 616

GAR-EGL Protege

#*15098880

LB 6807 Isabel 339

SS Objective T510 OT26

Hales Objective Lady 8361

#16313820

Hales Miss Design Lady 4128

Rito 616 of 4B20 6807

GAR Precision 2536

DHD Traveler 6807

LB E31 Isabel 168

SS Traveler 6807 T510

SS Miss Rita R011 7R8

Bon View New Design 878

Hales Miss 7069 1150

PRODUCTION EPDs					CARCASS EPDs			\$ VALUES			
CED	BW	WW	YW	Milk	Marb	RE	Fat	\$W	\$F	\$G	\$B
+12	+7	+70	+123	+22	+63	+50	+0.024	+63.38	+87.47	+37.08	+150.23



KCF BENNETT ABSOLUTE

BD: 03/08/2009 BULL: #*16430795 TATTOO: W299

Sitz Traveler 8180

SAV Final Answer 0035

#*13592905

SAV Emulous 8145

Wulffs Ext 6106

Thomas Miss Lucy 5152

15005375

Thomas Miss Lucy 3050

GDAR Traveler 71

Sitz Everelda Entense 1137

Bon View Bando 598

SAV Sky Emulous 2124

N Bar Emulation EXT

Wulffs Erica Dianna C116

Rito 616 of 4B20 6807

Thomas Miss Lucy 1723

PRODUCTION EPDs					CARCASS EPDs			\$ VALUES			
CED	BW	WW	YW	Milk	Marb	RE	Fat	\$W	\$F	\$G	\$B
+11	-1	+62	+114	+20	+75	+72	+0.029	+63.53	+86.43	+43.25	+156.12



CONNELLY CONSENSUS 7229

BD: 01/15/2009 BULL: #*16447771 TATTOO: 9122

KMK Alliance 6595 187

Connelly Consensus

#*15513367

Blinda of Conanga 004

Woodhill Admiral 77K

Blue Lilly of Conanga 16

15804270

Blue Cash of Conanga 6020

Sitz Alliance 6595

GAR Ext 916

Rito 616 of 4B20 6807

Blenda of Conanga 129

SAF Focus of ER

Woodhill Lass 344-1178

Connelly Timeline

Blue Time of Conanga

PRODUCTION EPDs					CARCASS EPDs			\$ VALUES			
CED	BW	WW	YW	Milk	Marb	RE	Fat	\$W	\$F	\$G	\$B
+6	+1.9	+56	+93	+21	+88	+39	+0.009	+74.17	+44.19	+48.01	+108.43



HALES UPWARD TOP HAND 1111

BD: 04/01/2011 BULL: *17046678 TATTOO: Y111

Connelly Onward

Sitz Upward 307R

#14963730

Sitz Henrietta Pride 81M

CA Future Direction 5321

Hales Miss Future Lady 3252

#14686905

Hales Bright Star 5162

Connelly Lead On

Altune of Conanga 6104

Sitz Value 7097

Sitz Henrietta Pride 1370

GAR Precision 1680

CA Miss Power Fix 308

Mc Clintock of Memory

Hales Star Lady 073

PRODUCTION EPDs					CARCASS EPDs			\$ VALUES			
CED	BW	WW	YW	Milk	Marb	RE	Fat	\$W	\$F	\$G	\$B
+6	+1.0	+61	+89	+28	+49	+87	-0.016	+67.83	+25.85	+39.34	+121.48



CONNELLY COMBINATION 0188

BD: 01/24/2010 BULL: *16748950 TATTOO: 0188

KMK Alliance 6595 187

Connelly Consensus

#*15513367

Blinda of Conanga 004

Connelly Tobin

Black Cayra of Conanga 8127

16250286

Black Camma of Conanga 4184

Sitz Alliance 6595

GAR Ext 916

Rito 616 of 4B20 6807

Blenda of Conanga 129

Bon View New Design 208

Delia of Conanga 667

E&B 1680 Precision 1023

Black Camra of Conanga 926

PRODUCTION EPDs					CARCASS EPDs			\$ VALUES			
CED	BW	WW	YW	Milk	Marb	RE	Fat	\$W	\$F	\$G	\$B
+7	-9	+56	+97	+18	+52	+43	+0.019	+55.26	+65.02	+35.23	+125.72



HALES CHISUM 2016

BD: 01/10/2012 BULL: +*17310071 TATTOO: Z016

S Alliance 3313

S Chisum 6175

#*15511451

S Gloria 464

B/R New Frontier 095

Hales New Frontier Lady 4084

14761245

Hales Miss Design 0059

Paws Up Alliance 9561

Paws Up 9048 Emulation Ext

S Eclipse 169

S Gloria 209

B/R New Design 036

White Fence Pride H1

B/R New Design 323

Hales Miss Rito 7051

PRODUCTION EPDs					CARCASS EPDs			\$ VALUES			
CED	BW	WW	YW	Milk	Marb	RE	Fat	\$W	\$F	\$G	\$B
+4	+2.9	+57	+92	+18	+42	+44	+0.031	+46.89	+46.96	+27.57	+140.27



CONNELLY COMRADE 1385

BD: 02/02/2011 BULL: *17031465 TATTOO: 1385

Connelly Consensus

Connelly Consensus 7229

#*16447771

Blue Lilly of Conanga 16

GAR New Design 5050

Happy Gee of Conanga 919

16454356

Hap Gina of Conanga 260 4965

KMK Alliance 6595 187

Blinda of Conanga 004

Woodhill Admiral 77K

Blue Cash of Conanga 6020

B/R New Design 036

GAR Precision 706

Baldrige Kaboom K243 KCF

Happy Grill of Conanga 6260

PRODUCTION EPDs					CARCASS EPDs			\$ VALUES			
CED	BW	WW	YW	Milk	Marb	RE	Fat	\$W	\$F	\$G	\$B
+17	-3.5	+46	+90	+27	+62	+67	-0.001	+73.54	+57.02	+44.08	+103.20



SANDPOINT BUTKUS X797

BD: 01/29/2010 BULL: +*16829413 TATTOO: X797

Sitz Traveler 8180

SAV Final Answer 0035

#*13592905

SAV Emulous 8145

GAR Grid Maker

GAR Grid Maker 4603

+14755072

GAR New Design 741

GDAR Traveler 71

Sitz Everelda Entense 1137

Bon View Bando 598

SAV Sky Emulous 2124

GDAR Traveler 044

GAR Precision 2536

B/R New Design 036

GAR Precision 2168

PRODUCTION EPDs					CARCASS EPDs			\$ VALUES			
CED	BW	WW	YW	Milk	Marb	RE	Fat	\$W	\$F	\$G	\$B
+14	-7	+71	+126	+7	+54	+27	+0.006	+52.50	+101.78	+34.37	+142.60

REFERENCE Sires



CONNEALY IN SURE 8524

BD: 02/07/2008 BULL: #*16205036 TATTOO: 8524

SAF Focus of ER

Mytty In Focus

#*13880818

Mytty Countess 906

Connealy Onward

Entreena of Conanga 657

15216323

Entity of Conanga 5657

SAF Fame

GDAR Forever Lady 246

Sitz Alliance 6595

Baldrige Countess 357

Connealy Lead On

Altune of Conanga 6104

GAR Expectation 4915

Enlover of Conanga

PRODUCTION EPDs					CARCASS EPDs			\$ VALUES			
CED	BW	WW	YW	Milk	Marb	RE	Fat	\$W	\$F	\$G	\$B
+18	-2.3	+44	+82	+39	+1.05	+68	+0.20	+63.86	+28.98	+52.02	+132.10



AAR TEN X 7008 SA

BD: 02/09/2007 BULL: #*15719841 TATTOO: 7008

SAF Focus of ER

Mytty In Focus

#*13880818

Mytty Countess 906

SAV Adaptor 2213

AAR Lady Kelton 5551

#15151449

HSAF Lady Kelton 504B

SAF Fame

GDAR Forever Lady 246

Sitz Alliance 6595

Baldrige Countess 357

BCC Bushwacker 41-93

SAV Abigale 0451

Sitz Traveler 8180

NA Lady Constance 504

PRODUCTION EPDs					CARCASS EPDs			\$ VALUES			
CED	BW	WW	YW	Milk	Marb	RE	Fat	\$W	\$F	\$G	\$B
+8	+6	+63	+122	+24	+1.01	+55	+0.03	+69.40	+94.30	+49.64	+168.91



SAV TEN SPEED 3022

BD: 02/17/2013 BULL: *17633563 TATTOO: 3022

Mytty In Focus

AAR Ten X 7008 SA

#*15719841

AAR Lady Kelton 5551

SAV Bismarck 5682

SAV Madame Pride 1134

#16928514

SAV Madame Pride 9100

SAF Focus of ER

Mytty Countess 906

SAV Adaptor 2213

HSAF Lady Kelton 504B

GAR Grid Maker

SAV Abigale 0451

Rito 707 of Ideal 3407 7075

SAV Madame Pride 4466

PRODUCTION EPDs					CARCASS EPDs			\$ VALUES			
CED	BW	WW	YW	Milk	Marb	RE	Fat	\$W	\$F	\$G	\$B
+5	+1.6	+66	+127	+17	+0.79	+80	-0.07	+48.64	+109.83	+46.71	+179.87



GDAR LEUPOLD 298

BD: 02/13/2012 BULL: *17228402 TATTOO: 298

AAR Ten X 7008 SA

AAR Leupold 0578

#*16643461

AAR Ankonian 4015

GDAR Justice 622

GDAR Miss Blackcap 9232

*16341637

GDAR Miss Blackcap 556

Mytty In Focus

AAR Lady Kelton 5551

AAR Rambler 779

AAR Ankonian 350

ER Justice N013

GDAR Miss Wix 430

DHD Traveler 6807

GDAR Miss Blackcap 320

PRODUCTION EPDs					CARCASS EPDs			\$ VALUES			
CED	BW	WW	YW	Milk	Marb	RE	Fat	\$W	\$F	\$G	\$B
+14	-0.3	+69	+120	+26	+0.45	+35	-0.20	+73.82	+94.01	+32.63	+153.25



VAR DISCOVERY 2240

BD: 03/06/2012 BULL: *17262835 TATTOO: 2240

Mytty In Focus

AAR Ten X 7008 SA

#*15719841

AAR Lady Kelton 5551

Sitz Upward 307R

Deer Valley Rita 0308

*16659293

GAR Objective 2345

SAF Focus of ER

Mytty Countess 906

SAV Adaptor 2213

HSAF Lady Kelton 504B

Connealy Onward

Sitz Henrietta Pride 81M

SS Objective T510 OT26

GAR 1407 New Design 2413

PRODUCTION EPDs					CARCASS EPDs			\$ VALUES			
CED	BW	WW	YW	Milk	Marb	RE	Fat	\$W	\$F	\$G	\$B
+4	+1.7	+72	+139	+26	+1.15	+75	-0.048	+73.07	+99.47	+57.08	+169.27



QUAKER HILL MANNING 4EX9

BD: 03/16/2014 BULL: *17831034 TATTOO: 4EX9

EXAR Upshot 0562B

EXAR Denver 2002B

#*17160560

Exar Royal Lass 1067

MCC Daybreak

Quaker Hill Blackcap 0A32

*16925768

QHF Blackcap 6E2 of4V16 4355

Sitz Upward 307R

EXAR Barbara T020

EXAR 263C

BR Royal Lass 19-132

Boyd New Day 8005

MCC Miss Focus 134

Ideal 4355 of OT26 2440

QHF Blackcap 4V16 of 1H8

PRODUCTION EPDs					CARCASS EPDs			\$ VALUES			
CED	BW	WW	YW	Milk	Marb	RE	Fat	\$W	\$F	\$G	\$B
+11	+2.2	+77	+128	+30	+0.90	+57	+0.032	+76.78	+86.04	+44.17	+160.08



KCF BENNETT FORTRESS

BD: 09/25/2011 BULL: *17259012 TATTOO: Y331

KMK Alliance 6595 187

Connealy Consensus

#*15513367

Blinda of Conanga 004

SS Objective T510 OT26

Thomas Patricia 9705

*16615196

Thomas Patricia 71138

Sitz Alliance 6595

GAR Ext 916

Rito 616 of 4B20 6807

Blenda of Conanga 129

SS Traveler 6807 T510

SS Miss Rita R011 7R8

GAR Predestined

Thomas Patricia 2626

PRODUCTION EPDs					CARCASS EPDs			\$ VALUES			
CED	BW	WW	YW	Milk	Marb	RE	Fat	\$W	\$F	\$G	\$B
+10	+2	+78	+137	+29	+0.63	+73	-0.042	+81.22	+111.54	+45.02	+152.23



BALDRIDGE BRONC

BD: 01/06/2015 BULL: *18229425 TATTOO: C010

EF Complement 8088

EF Commando 1366

*17082311

Riverbend Young Lucy W1470

Styles Upgrade J59

Baldrige Isabel Y69

*17149410

Baldrige Isabel T935

Basin Franchise P142

EF Everelda Entense 6117

B/R Ambush 28

Riverbend Young Lucy T1080

Sitz Upward 307R

Plainview Lassie 71B

Baldrige Kaboom K243 KCF

Baldrige Isabel P4527

PRODUCTION EPDs					CARCASS EPDs			\$ VALUES			
CED	BW	WW	YW	Milk	Marb	RE	Fat	\$W	\$F	\$G	\$B
+16	-2.5	+65	+112	+31	+0.68	+58	+0.041	+76.05	+64.04	+41.02	+104.97

REFERENCE Sires



MGR TREASURE

BD: 01/17/2015 BULL: +*18156972 TATTOO: 5017

AAR Ten X 7008 SA

VAR Discovery 2240

*17262835

Deer Valley Rita 0308

Connealy Impression

SJH Impression of 6108 1614

*17170341

DRMCTR 111 Rita 6108

Mytty In Focus

AAR Lady Kelton 5551

Sitz Upward 307R

GAR Objective 2345

Connealy Reflection

Pearl Pammy of Conanga 194

Rito 111 of 2536 Rito 616

DRMCTR 2908s Design 2B02

PRODUCTION EPDs					CARCASS EPDs			\$ VALUES			
CED	BW	WW	YW	Milk	Marb	RE	Fat	\$W	\$F	\$G	\$B
+12	-1.0	+68	+134	+14	+1.14	+59	-.002	+54.74	+99.02	+53.77	+153.79



HALES COMBINATION 5116

BD: 03/19/2015 BULL: +*18404649 TATTOO: C116

Connealy Consensus

Connealy Combination 0188

*16748950

Black Cayra of Conanga 8127

CRA Bextor 872 5205 608

Hales Bextor Lady 8277

*16313816

Hales Miss Objective 5212

KMK Alliance 6595 187

Blinda of Conanga 004

Connealy Tobin

Black Camma of Conanga 4184

BAR Ext Traveler 205

Cra Lady Jaye 608 498 S Easy

SS Objective T510 OT26

Hales Miss 616 Lady 3102

PRODUCTION EPDs					CARCASS EPDs			\$ VALUES			
CED	BW	WW	YW	Milk	Marb	RE	Fat	\$W	\$F	\$G	\$B
+8	+1.8	+55	+85	+31	+45	+73	+0.03	+67.13	+42.22	+36.80	+110.79



QHF WWA BLACK ONYX 5Q11

BD: 09/21/2015 BULL: +*18463791 TATTOO: 5Q11

Connealy Consensus 7229

Connealy Black Granite

#17028963

Eura Elga of Conanga 9109

MCC Daybreak

Wilks Blackcap 0D82

*16711193

QHF Blackcap 6E2 of4V16 4355

Connealy Consensus

Blue Lilly of Conanga 16

SAV Bismarck 5682

Eura Cal of Conanga 56B

Boyd New Day 8005

MCC Miss Focus 134

Ideal 4355 of OT26 2440

QHF Blackcap 4V16 of 1H8

PRODUCTION EPDs					CARCASS EPDs			\$ VALUES			
CED	BW	WW	YW	Milk	Marb	RE	Fat	\$W	\$F	\$G	\$B
+15	-1.5	+86	+149	+39	+41	+91	-.005	+102.44	+126.16	+30.73	+187.23



G A R 100X

BD: 09/22/2013 BULL: +*17774305 TATTOO: A3052

Mytty In Focus

AAR Ten X 7008 SA

#15719841

AAR Lady Kelton 5551

G A R New Design 5050

G A R 5050 New Design A91

*16533134

G A R Objective A706

SAF Focus of ER

Mytty Countess 906

SAV Adaptor 2213

HSAF Lady Kelton 504B

B/R New Design 036

G A R Precision 706

S S Objective T510 OT26

G A R Integrity T465

PRODUCTION EPDs					CARCASS EPDs			\$ VALUES			
CED	BW	WW	YW	Milk	Marb	RE	Fat	\$W	\$F	\$G	\$B
+18	-4.5	+48	+95	+37	+1.09	+0.82	-.069	+57.31	+55.03	+59.07	+157.45



Nutrition Plus is an American owned and operated company that provides a full line of quality livestock minerals and other nutrition supplements. We are dedicated to providing our customers with the best products and services in the industry, offering the best nutrition for your cattle (cow/calf, stocker, feedlot), horses, sheep and goats. "Branded For Quality" is not just a phrase but a philosophy of commitment in all that we do.

Branded For Quality is the standard for which Nutrition Plus strives every day to fulfill. This standard is achieved by providing quality products with quality results! Relationships are the benchmark of our successes both past and future. We invite you to be a part of our journey!

Dan Puckett 806-290-4089
www.nutritionplus.biz

 Doak Crabtree Stratford	 Ross Glenn Amarillo	 Alvia Calvert Dumas	 Trisha Keener Stratford	 Geoff Phemister Amarillo	 Brad Petty Lubbock
	 Steve Seabourn Amarillo	 Gary Hinders Canyon	 Kris Cartrite Dumas	<h1>Experience</h1>	
 Kelly Livingston Shamrock	 Scott Lewis Amarillo	 David Tarver Canyon	 Brandon Harrison Floydada	 Jessica Terrell Lubbock	 Willis McCutcheon Plainview
<h1>that just keeps</h1>			 Clay Mercer Lubbock	 Monty Teeter Lockney	 Jim Bryan Amarillo
 Erin Viermann Amarillo	 Alan Eubank Pampa	 Wes Hukill Borger	 Bud Holmes Lubbock	 AMERICAN BANKER BEST BANKS TO WORK FOR 2014, 2015, 2016, 2017, 2018 5 YEARS IN A ROW	 Gary Wells Amarillo
 Benny Teafatiller Amarillo	 Highest Rating for Financial Strength by Bauer Financial, Inc. the nation's leading bank rating firm.	 Lanny Crow Scurry	 Eli Hernandez Dalhart	<h1>growing.</h1>	
 John Haley Canadian	 Kyle Fuston Silverton	happybank.com		<h1>HAPPY Ag Lending Team.</h1>	
 Forbes 2018 BEST-IN-STATE BANKS Powered by STATISTA and the 26th Best Bank in the USA!		 3rd Best Bank in Texas	 Brady Shadid Pamhandle	 HAPPY STATE BANK AND TRUST COMPANY Member FDIC	



27951 S. US Hwy. 87, Canyon, TX 79015

PRST
FIRST CLASS
US POSTAGE
PAID
AMARILLO, TX
PERMIT NO 247